



**Guiding  
Eyes**  
for the Blind



2 0 2 2   A N N U A L   R E P O R T



## Contents

A Letter From Our Leaders	1
Our Graduates	4
By the Numbers	8
Journey of a Guiding Eyes Dog	9
Our Programs	10
Our Supporters	14
Financial Report	28
Board & Leadership	29



**Guiding Eyes is an accredited member of the International Guide Dog Federation (IGDF), the organization that establishes worldwide standards for the breeding and training of guide dogs.**



**WE ♥  
Puppy  
Raisers**

Guiding Eyes is grateful for the support of our puppy raisers: generous volunteers who help prepare our pups for guide dog training. Nearly 65% are repeat raisers, and some people have raised more than 30 puppies!

Throughout this report, you'll meet some of our marvelous puppy raisers such as CJ + Larson, on the cover, and Serinah + Elijah, shown above. They put a piece of their heart into our wonderful dogs. To learn more about becoming a puppy raiser, visit [guidingeyes.org/puppy-raising](https://guidingeyes.org/puppy-raising)



Guiding Eyes is a 501(c)(3) nonprofit organization that provides all services completely free of charge. At Guiding Eyes, we rely upon the contributions of our generous donors to fulfill our mission.

We work out of our Headquarters and Training Center in Yorktown Heights, New York, and our Canine Development Center in Patterson, New York. Our Puppy Raisers are located along the Eastern Seaboard, stretching from Maine to North Carolina, and west to Ohio. Regional Guide Dog Mobility Instructors are located throughout the United States to help support the ongoing relationship with each graduate as they adapt to traveling with their guide dog in their local communities.

## A Letter From Our Leaders

Dear Friend of Guiding Eyes for the Blind,

We are proud to bring you our Annual Report, representing the achievements of our wonderful community of staff, trainers, volunteers, graduates, donors and dogs in Fiscal Year 2022.

As we reflect on the year, an essential truth stands out: guide dogs are incredibly important. Not only do they bring increased independence and mobility to people with vision loss, but our devoted guide dogs also provided much-needed extra love, emotional support and strength in difficult times. Throughout recent challenges, Guiding Eyes has remained focused on our goal: providing individuals who are blind or experiencing vision loss with exceptional guide dogs for greater independence.

What brings people to Guiding Eyes for their guide dog? Over and over, we hear from our graduates that it's our personal approach to helping them create a more fulfilling life. We meet them where they are.

There is no one "type" of Guiding Eyes graduate: we serve first-time guide dog users like college student Kai, partnered with Pride, as well as vocational rehabilitation counselor Linda, who is with her sixth guide dog, Disney.

We matched active, outdoorsy Casey with sassy Kanga, while Barbara is grateful that Quasar's steady, deliberate pace matches her own.

Lenore, a member of the DeafBlind community, came to our New York campus to receive Hachi through our Specialized Training Program; our Home Training Program brought Cannon to Ralph at his senior living community.

Guiding Eyes supports the full potential of these graduates and many more by giving them the priceless gift of a confident and well-trained guide dog by their side. It is all possible due to the generosity, dedication and hard work of people like you.

*Letter continues on Page 2*

**Our Mission:**  
**To provide guide dogs to people with vision loss. We are passionate about connecting exceptional dogs with individuals for greater independence.**



**Thomas + Blaze and John**



## A Letter From Our Leaders, continued:

**In Fiscal Year 2022, we are pleased to report the following achievements:**

**469 puppies were born:** 439 Labrador Retrievers and 30 German Shepherds.

**320 puppies were selected to be placed in homes with puppy raiser families.**

**264 dogs entered guide dog training,** including 249 Labrador Retrievers and 15 German Shepherds. 38 dogs went on to other careers.\*

**Of our 2022 guide dog teams, 115 guide dogs graduated from training and were paired with people with vision loss,** including 105 Labrador Retrievers and 10 German Shepherds.

**Nine of the teams received Specialized Training, and two of the teams were Running Guides.**

**59% of graduates were new to our school,** and 86% of those graduates, new to our school, have never had a guide dog before. 41% of graduates have been at Guiding Eyes before.

Guiding Eyes takes our role seriously as a thought leader in the global guide dog community. We continue to develop innovative programs that reimagine what can be done with a guide dog; design new equipment that improves the connection between dog and handler; and pioneer the use of data to improve the guide dog experience. Our efforts in the 2022 Fiscal Year include:

- The new Guiding Eyes Community Outreach Center opened in downtown Yorktown Heights, NY. The space serves as an additional training site while allowing us to conduct outreach to the local community, raise awareness of our mission, and attract new volunteers.
- We continue to advocate for people with disabilities, on individual, local, and national levels, with emphasis on inclusivity and diversity. We all have an important role in educating the public on access rights.
- We implemented a five-year strategic plan to chart a sustainable path for long-term growth, while maintaining the exceptional quality of our guide dogs and training experience.
- We established a new Client Experience Team to provide the highest care and individualized service to our students as they navigate each phase of their journey in seeking, receiving, working with, and retiring a Guiding Eyes guide dog.
- To increase our ability to customize training, we shortened the on-campus class length with more focused instructor training and provide additional one-on-one instruction, when needed, for each of our students.

\* Training cycles may straddle two fiscal years.



- To better serve the growing number of Specialized Training Program applicants, we added new Guide Dog Mobility Instructors and trained more Regional Guide Dog Mobility Instructors in Specialized Training techniques.
- We continue working with Google as it refines Project Guideline, a mobile navigation system that allows individuals with vision loss to run independently, without a human or canine guide. The program was recognized by *Fast Company Magazine* as part of its World Changing Ideas Awards.
- In partnership with IBM and North Carolina State University, we continue to test Smart Collar technology to measure the pull and pace of a dog, which improves our ability to match a dog according to an individual's needs.
- Throughout the fiscal year, we partnered with leading organizations including Cerberus Capital Management, The Dogist, Galaxy Digital Holdings, JPMorgan Chase & Co., Nike, Ruffwear, and Subaru to educate, inform, and spread the word about our work. We hosted members of Lion's Club International for a festive cookout at our Yorktown Heights campus, celebrating their decades-long partnership and ongoing generosity. We also worked with Pilots to the Rescue, whose volunteer pilots lovingly transported guide dogs between our headquarters and the homes of students and volunteer puppy raisers.
- Our largest fundraising event was able to return in-person to the Mount Kisco Country Club – the 45th Annual Guiding Eyes for the Blind Golf Classic, hosted by our Board Member Eli Manning. Eli and friends also participated in the Wag-a-thon, a cumulative marathon that fundraisers and their dogs completed at their own location during the month of September. And in honor of National Dog Month in August, Guiding Eyes staff, volunteers, and a variety of our exceptional canines were invited to participate in the iconic bell ringing ceremony at NASDAQ in New York City's Times Square.

In this Annual Report, you'll learn more about how the Guiding Eyes community has adapted to the changes the world has brought. We are proud of the success that our organization and our thousands of supporters achieved. We would not exist or be able to do what we do without our donors, and we are very thankful of your support. Our volunteers and puppy raisers are also an essential part of the equation: their willingness to open their homes to our wonderful dogs, take them to classes, show them the world, and of course, love them, makes our vital work possible.

Bringing a person and a dog together to become a guide dog partnership is a team sport, and we are grateful to have you on our team.

Sincerely,



John L. Donnelly  
Board Chair



Thomas A. Panek  
President & CEO



IBM Watson®





# Our Home Training Graduates



Home training took on critical importance during the pandemic. Guiding Eyes staff and volunteers crossed the United States to bring students and guide dogs together to safely complete their training.





# Our On-Campus Graduates



May 2022 - Group 1



May 2022 - Group 2



June 2022 - Group 1

On-campus students travel to our Yorktown Heights, NY campus to participate in an immersive training program. With a focus on health and safety, we were overjoyed to begin a gradual return to full operations at the end of 2021.



June 2022 - Group 2



July 2022



August 2022



September 2022

# Graduate Spotlights

## Barbara + Quasar



“Quasar, like my previous guide dogs, Joanne and Oakie, also from Guiding Eyes, gives me freedom. I don’t have to be afraid anymore. These dogs work so hard to keep you safe, whether walking in your community, riding on a train, a plane, or a bus. My trainer Andrea said, ‘you can trust Quasar as you walk.’ I know he’s going to help keep me safe.”

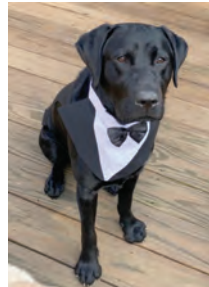


### We ❤️ Puppy Raiser Debbie

*“Quasar is a loyal and lovable puppy! He is always excited to go on new adventures or just to stay home and cuddle. He was with me for two years due to COVID and I loved having the extra time with him. He will be an excellent guide and companion.”*

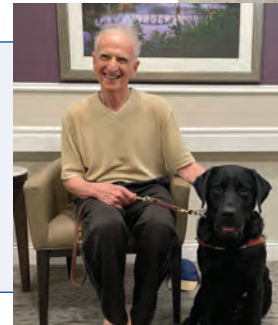
## Ralph + Cannon

“Cannon is the first guide dog in my senior living community, so naturally he draws a lot of attention from everyone. Despite the distractions, he performs his job well. Kathryn, my trainer, taught me that being partially sighted, I should not try to guide Cannon, but allow Cannon to guide me. I had to learn to switch roles and have patience. As a result, I now feel much safer.”



### We ❤️ Puppy Raisers Kari and Bernie

*“From 9 weeks old, Cannon was so sweet. He instinctively knew how to be gentle with our older dogs, yet he was able to get the zoomies out of his system. We are SO proud of the kind, smart, handsome dog Cannon has become.”*



## Casey + Kanga



“Kanga is very smart and very intuitive, and she can be pretty sassy too! I’m able to get to all of my destinations quickly. So far, I’ve never been late to class or a meeting because Kanga and I are like, go, go, go, all the time. I love the Guiding Eyes philosophy of training dogs... they’re very different in the things they do. They can train a dog to cater to a person’s specific needs.”



### We ❤️ Puppy Raiser Gena

*“From the minute Kanga joined us, I knew we were in for a good time. She is super fun and super smart! I’m confident and happy that Kanga and her new partner Casey will have many great adventures as they live their best lives together.”*



## Lenore + Hachi



"I applied to Guiding Eyes for multiple reasons. First, I had a wonderful experience with my first guide Hobbs, and second, because Guiding Eyes has a very good program for training guide dogs for people who are deaf and blind. Having a guide dog enables me to take long walks for exercise in my neighborhood. I feel more independent, so I love it."

### We ❤️ Puppy Raiser Pamela

*"I always felt that Hachi was destined to do great things. His greatest strengths were his sweet nature, eagerness, and determination.*

*Now Hachi is doing what he was meant to do, having mastered the skills he needs to be a guide while keeping those wonderful qualities."*

**Hachi was Special Named by Mr. and Mrs. Kuni Nakamura and family, and is also a Pathfinder Pup. Learn more about Special Naming on Page 18 and our Pathfinder Society on Page 24.**



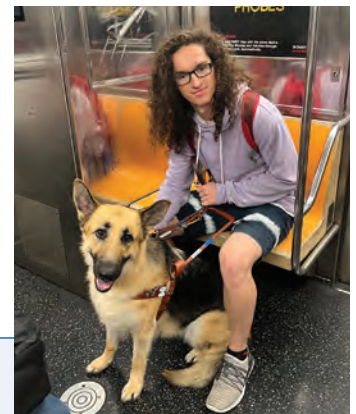
## Kai + Pride

"It is really nice having a good buddy around. She makes daily life and travel much easier. Navigating around is quicker, and I am more confident. I recently went on a trip to New Orleans with Pride, and it was interesting to see how quickly she got used to working around huge crowds and tons of different distractions."



### We ❤️ Puppy Raiser Leslie

*"Pride is just a wonderful bright, sweet and affectionate dog. When walking Pride, sometimes she would do a little bounce. She just seemed to be saying that life is great which always made me smile. We are so proud of her and wish her and Kai many years of adventures."*



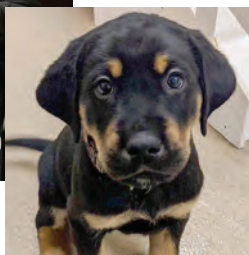
## Linda + Disney



"Disney gives me confidence to access more possibilities. There is a new bus route now available in my rural area, and my regional trainer Kathy helped Disney and me to acclimate to the route to my office. I feel a stronger sense of independence. I appreciate attending meetings, events, and church with Disney. With a guide dog I feel more like myself when navigating through the world."

### We ❤️ Puppy Raiser Denise

*"Disney had natural instincts of human expectations, therefore making him an easy puppy to raise. He likes to please and is a go-with-the-flow kind of guy. I'm so happy he can share his guide dog abilities and love with his new graduate."*





# Guiding Eyes By the Numbers

Gregory + Kenner

**We have 65+ years of experience providing guide dogs to people with vision loss.**

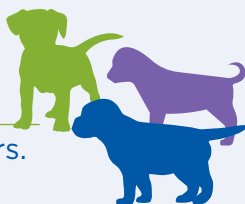
We estimate that more than 10,000 service dog teams have graduated since our founding in 1954.

All of our services are provided free of charge to people who are blind or visually impaired.

Guiding Eyes does not depend on government funding. Our support comes almost entirely from individuals and philanthropic organizations.

**Nearly 500 pups are born annually.**

92% are Labrador Retrievers.  
8% are German Shepherds.



**Over 100 guide dogs are placed annually.**



**More than 1,700 volunteers support our mission.**



**Approximately 1,000 Guiding Eyes dogs actively worked as service animals for people with vision loss over the past year.**





# The Journey of a Guiding Eyes Dog

## Birth

Puppies are born at the Canine Development Center in Patterson, New York.



## Birth to 8 Weeks

Puppies receive early training and socialization.



## 8 Weeks to 16 Months

Puppies learn key skills from volunteer puppy raisers.



## 16 Months to 22 Months

Dogs join Guide Dog Mobility Instructors in Yorktown Heights, New York to learn guide work.



## 22 Months to 8-10 Years

Dogs are matched and live with people who are blind as guides until retirement.







# Our Programs

## Genetics & Breeding

As a global leader in genetics and breeding, Guiding Eyes employs industry best practices in our approach towards continually improving the health and temperament of our dogs. Our data-driven approach, together with our partnerships with other guide dog organizations, specialists, and universities, helps to promote genetic diversity and ensure that each generation of dogs is improving over time.

Our purposefully bred puppies are born at the Canine Development Center in Patterson, New York, where they are lovingly nurtured and socialized before entering a puppy raiser's home.

## Socialization

Guiding Eyes runs an extensive pre-training program geared at developing each pup's desire to connect with people, giving them a head start in understanding how to work with people in a positive, fun relationship.

From birth to 12 weeks, we acclimate our pups to the sights, sounds, social interactions, and early training that will maximize their potential to be a guide dog. Volunteers in our Early Socialization Program come in daily to massage our puppies from the time they are one week old, which begins building the vital relationship between the puppies and their human companions.

Volunteer Home Socializers build on early kennel socialization experiences by helping the puppies in a positive and supportive manner to become accustomed to a home environment and encouraging them to explore the sights and sounds of a busy household.



## Hockmeyer Puppy Pavilion

At age 6-9 weeks, our puppies transition to spacious kennels adjacent to the Hockmeyer Puppy Pavilion.

In this fun, stimulating, toy-filled indoor and outdoor environment, pups continue to build upon the progressive lessons taught by staff and volunteers.

Puppies learn self-control when getting fed or picked up, settling during crate-time, problem-solving and developing skills such as climbing stairs, and mastering a variety of unusual underfootings such as metal grates.

## Puppy Raising

Puppies selected as potential future Guiding Eyes guide dogs are placed in volunteer homes for 12 to 18 months.

These essential volunteers raise a Guiding Eyes puppy by



providing the pup with the love, socialization, house manners, and basic obedience they will need to succeed in guide dog training. The pup's journey later continues at our Headquarters & Training Center in Yorktown Heights, New York, as they realize their full potential and train to become a world-class Guiding Eyes guide dog.

## Brood & Stud Fostering

Guiding Eyes breeding dogs ensure the future of all our programs. They are vital to our work, and the people who provide them with homes are crucial members of the Guiding Eyes community.

Brood/Stud fosters and sitters take on the responsibility of the health, well-being, and happiness of one of our breeding dogs. Our foster/sitter volunteers are also our diplomats, showing off our wonderful dogs to their communities each time they leave home.

## Veterinary Services

At Guiding Eyes, we are dedicated to providing excellence in veterinary care. We operate two state-of-the-art veterinary hospitals through our main campus in Yorktown Heights, New York and our Canine Development Center in Patterson, New York.

Our veterinarians, licensed veterinary technicians, and administrative staff care for dogs in the Breeding, Puppy, and Training Programs. Our vet care extends to all working Guiding Eyes dogs through remote communication and referrals, and using our own facilities when proximity allows.

Our veterinary team performs routine surgical and dental procedures, x-rays, sonograms, endoscopy, laboratory work, vaccinations, and an array of wellness services. We also work with specialists in ophthalmology, cardiology, neurology, orthopedics, and radiology, many of whom donate services to help provide our dogs with the best care possible.

## Kennel Enrichment

Guiding Eyes' extensive kennel enrichment program helps ensure that our dogs have a positive, enjoyable stay with us. We evoke our dogs' interest by exposing them to a variety of new stimuli, including community playtime together, movement, natural and artificial objects, different textures and surfaces, and puzzles and food toys.







Our nurturing staff and volunteers provide a healthy combination of exercise and rest to stimulate our dogs' minds, enhance their lives and prevent stress during this important training period.

## Training Our Guide Dogs

Dogs sent to guide dog training learn the concepts of guiding in small steps, and build upon previous lessons with many repetitions in a great variety of situations.

Dogs in training are assigned to a Guide Dog Mobility Instructor (GDMI), who will develop a relationship with the dog through play, obedience, work, and time together. Our instructors will work with each dog for a minimum of five months.

A guide dog is ready for placement with a partner when the dog responds reliably and safely to all work situations they will encounter while guiding, such as indicating a curb, a change in elevation, and navigating around obstacles. We carefully match each guide dog with a person based on pace, pull, personality and the person's preferences.



## Career-Change Dogs

Each Guiding Eyes dog demonstrates their potential career path. Only dogs showing the self-confidence and composure necessary for guide work are assigned to undergo guide dog training and placement with a person who is blind or visually impaired.

Dogs who are not selected for guide dog work often go on to other important careers as working dogs. For example, a dog with a little too much energy to settle may enjoy an active career using their nose in law enforcement. Others may become service dogs in partner organizations.

Dogs who aren't well-suited to guide work or other careers are released from our program and placed in loving homes through public adoption. These loving puppies and dogs are in high demand but are well worth the wait.



## Guide Dog Mobility Instruction

Guiding Eyes is not one-size-fits-all; we know that every guide dog is different from the next. We celebrate every match we make between a person and their guide dog — and support that partnership throughout their lives together.

We offer flexible options for someone interested in receiving a guide dog, including On-Campus Training at our headquarters in Yorktown Heights, New York and Home Training for those unable to travel. We also offer Specialized Training for people who have additional challenges such as gait and balance issues, cognitive challenges, and hearing loss. And, our Running Guides program trains teams at a faster pace for enhanced physical fitness.





To further meet our students' needs, training can be adjusted to accommodate work schedules, family life and more. Our instructors continue to refine their training during each program to meet each student's needs — to ensure success.

## Caring for Our Students

As part of our personal approach, our nursing staff serves both Home Training and On-Campus Training students from the beginning of the application process. Our nurses communicate with students and their at-home practitioners in order to keep them connected, comfortable and safe during our program. While On-Campus Training is in session, nurses are available 24 hours a day to assist with routine medical needs and administer first aid as needed.

Our on-campus dining program includes meals at Rosie's Café, which are custom prepared with care to accommodate most dietary needs. The culinary experience is often named as a highlight of students' Guiding Eyes experience.

Our beautiful Yorktown Heights campus is fully accessible, and we coordinate a wide range of activities to help students make the most of personal time: everything from

catching a movie and hitting the gym, to support groups and religious services.

## Graduation

Graduation ceremonies are the culmination of training for our guide dog teams. They are an opportunity for puppy raisers to connect with their dogs' new handlers and for our volunteers, donors, and supporters to share in the celebration.

Quite often, graduates and raisers develop a friendship that can last a lifetime. Past ceremonies are viewable on our website anytime.

## Retirement

The age of retirement from guide work varies considerably for each dog and is dependent upon factors related to the dog's health, age, and situation. The graduate has first option of adopting the retired guide dog or selecting an approved adopter who is a close friend or family member.

Sometimes, Guiding Eyes is able to place a retired guide dog with their original puppy raiser or another adopter. We are committed to caring for our dogs from the moment of their birth throughout their entire lives.





## Calle + Teal

### Our Supporters

We are grateful to our donors who generously supported our mission during the 2022 fiscal year, October 1, 2021 to September 30, 2022. Your gifts make it all possible!

#### IN RECOGNITION

- Donors \$100,000 and Above
- Donors \$50,000 to \$99,999
- Donors \$25,000 to \$49,999
- Donors \$10,000 to \$24,999
- Donors \$5,000 to \$9,999
- Donors \$2,500 to \$4,999
- Donors \$1,000 to \$2,499
- Lions
- In-kind Gifts
- Matching Gift and Employee Giving Programs
- Pathfinders
- Bequests & Trusts

#### SPOTLIGHTS

- Volunteer Spotlight
- Ways to Give
- Pathfinder Society Spotlight
- Planned Giving

#### \$100,000 and Up

Bannerot-Lappe Foundation  
Nancy and John Donnelly  
The Wohlers Family Foundation

#### \$50,000 to \$99,999

Loreen Beisswenger Farish  
Charitable Foundation  
Charles Firke and Miriam  
Kallchman  
Carol Hendrix  
James L. Mathas Foundation  
Phyllis Milton  
The Resource Foundation  
Doctor Domenic A. Vavala  
Charitable Fund of the Rhode  
Island Foundation  
The Dorothy Strelsin Foundation  
Suttle Charitable Trust  
Hugh Taylor  
The George T. Walker Charitable  
Fund of the Lehigh Valley

#### \$25,000 to \$49,999

H.A. & J.W. Alburger Charitable  
Trust  
James L. Amendola Foundation  
Fund of the American  
Endowment Foundation  
Hazell Annesi  
Katherine Bishop  
Mary Bresnan  
Samual M. and Alma Catsman  
Foundation  
Cerberus Capital  
Management, L.P.  
Robert Curry\*  
Davis Elkins Foundation  
Hanna Evans  
Field Hall Foundation  
The Flatley Foundation  
Charles A. Freuauff  
Foundation, Inc.

The Gatorade Company  
The Goodnow Fund  
Constance Goulandris  
Foundation  
Carter and Carla Gowrie  
Glenn Greenberg and  
Linda Vester  
Mary P. Dolciani Halloran  
Foundation  
William G. and Helen C. Hoffman  
Foundation  
Janet Humphreys  
The Arthur L. & Elaine V.  
Johnson Foundation  
Kinloch Consulting Group, Inc.  
Mr. and Mrs. Arthur and  
Marylyn Levitt  
Jil Maheu  
Eli Manning  
Za and Donald Manocherian  
Eric Margolis  
Joy Matson  
The Melik-Baschkopf Foundation  
Pendleton Charitable Gift  
Fund of National Christian  
Foundation  
The Portmann Family  
Charitable Fund  
Reader's Digest Partners for  
Sight Foundation  
Allene Reuss Memorial Trust  
James Warren Searcy Charitable  
Trust  
Phyllis Smith  
The John and Frank Sparacio  
Foundation  
Leslie Strupp  
Cynthia Vanneck  
Janina Voss  
The Lance R. Wachenheim  
Foundation  
Judith Weinberg  
Sarah and John Wildemore



Ronald J. Woods  
Charitable Trust

**\$10,000 to \$24,999**

Louis and Anne Abrons  
Foundation, Inc.

Kevin Alger  
Pamela Allison  
Marcia Almassy  
Christine McKendry and  
Eduardo Andrade

Andrea Ball  
Sandra Bass  
Ed and Laura Blatchford  
Priscilla Blum\*  
Boerger Foundation  
Susan Bogin  
Irene Boylan  
Gilberte Breslin  
Michael and Joan Burke  
Sarah Cahill  
Deborah Camp  
Elsie Carpenter  
The Thomas & Agnes Carvel  
Foundation

Cian Chang  
JPMorgan Chase  
The Chicago  
Community Trust  
Jay Coffman  
Constance M. Cooper  
Charitable Foundation  
C.S. Craig Family  
Foundation

The Creek Bed Foundation  
Mary Didot  
Russell Disbro  
Queta Dregely  
Howard A. Drescher  
Foundation

Harriett and Bob Druskin  
Jill Fagerlund  
Lillian Feder Foundation  
Valerie Fichera  
Carlo and Kim Frappolli  
Paul Gannon  
Mark Glasser  
Joseph and Paulette Gootter  
Robin L. Gordon  
Dr. Harry J. Heeb  
Foundation

The Helen G. Hauben  
Foundation

Irmy Haugen  
Mark Hayter  
Healthy Vision Association  
Gerard Heyman  
Paul Holland  
Carl Holst-Knudsen  
Rosemary Hughes  
Mr. and Mrs. Robert Hyde  
Interoceanic Corporation  
Richard Jennings  
Riva Johnson  
The Katzenberger  
Foundation, Inc.

Charles & Lucille King Family  
Foundation

Lisa Kraas  
James T. Lee Foundation  
Pamela Kuhn Lent and  
John Lent  
Walter Lesquillier

Lilly's Gift Foundation  
Gail and Al Maiolo  
Mr. Mordy Mandell  
Dondrea and Danny Marshall  
A B Massey Charitable  
Gift Fund

Megan Meuse  
Mey Share Foundation Inc.  
J.S. & S. Michaan Foundation  
Mithun Family Foundation  
Patricia Mondello  
NM Morris Family  
Foundation, Inc.

Polly G. Nicely Fund  
of National Christian  
Foundation

Robert Niehaus  
Laura J. Niles  
Foundation, Inc.

The Odd Fellow and  
Rebekah Benefit Fund

Arthur J. & Esther A.  
Ohlsson Charitable Trust

Susan Oldfield  
Diane Oltmann  
Oppenheim Family Fund  
The Peninsula Charities  
Foundation II

Jeanette Peter  
Linda M. Phillips  
James Polis  
Andrea Redmond  
Andrea Robbins  
Rohauer Collection  
Foundation, Inc.

Victor and Suzanne  
Rosenzweig  
Rye Subaru  
Doris R. Satterwhite  
Arlene Schafer  
Seventh District Foundation  
Ruth Sidorowicz  
SLA Foundation

LE and Jan B Jones Family  
Fund of the South Carolina  
Christian Foundation

Gary and Paget Stanco  
Neil and Susan Stockel  
Martha Washington Straus  
and Harry H. Strauss  
Foundation, Inc.

Jeanne Swartchild  
Tanner Industries, Inc.

Clare Teixeira  
Julie Tipps  
Anne Travalia  
Dr. Guarang Trivedi  
Jerry Umberger  
Patricia and James Verdon  
Janice Vogt  
Judith Walker  
Michael and Barbara Walters  
Weiss Family Foundation  
The Winston Foundation,  
Inc.

Richard Winter  
Yardi Systems, Inc.

**\$5,000 to \$9,999**

Mr. Ken Ackerman  
Andrew Adamczyk  
Jane Adams and  
William L. McNulty

AGTC  
The Alexander S. Alacche  
Foundation

Melodi Albert  
Artemis Anninos  
Fredrica Applebaum  
Hepi Armen  
AssetMark, Inc.

The Sandra Atlas Bass and  
Edythe and Sol G. Atlas  
Fund, Inc.

Jerre Ann Bader  
Mr. and Mrs. Scott Belair  
Keith and Corinne Bentley  
Jacky Beshar  
Frank and Tracy Bisignano  
The Emma and Georgina  
Bloomberg Foundation

Mr. and Mrs. Douglas  
Boustead  
Terence Brady  
William J. Brand  
Charles & Lois Marie Bright  
Foundation

Sandra Brock  
Robin Brown  
Barbara Brunner  
Cliff Burrows  
Busch Family Fund  
Karyn Caliri  
Ellen and Nirmal Chatterjee  
Clara Jeffery  
Charitable Trust

Alice Clark  
C&K Clark Family  
Foundation

Sheilagh Clarke  
The Ilene Clow Foundation  
Ralph Colyer  
D'Agostino Foundation  
Joanna Dallara  
Jane Davidson  
Davidson Family  
Charitable Fund II

Elsie H. Del Fierro Trust  
Susan Di Gerolamo  
Marianne Donahue  
Shirley Donnally  
Doolittle Family Foundation,  
Inc.

Anita Doyle  
Fay and Amy Dresner  
Robbie Dunlap  
Susan Dusenberry  
Judith Dutton  
Joyce Englund Foundation  
Bob and Ruth Escher  
Laura Fey  
Janet Frankovsky  
Delbert French, II\*  
Diane Froot  
Galaxy Digital Holdings  
George Gatto  
Drs. Kimberlee and Douglas  
Goldsmith  
Patricia Graves  
Elizabeth and Skip Greene  
Karen Greene  
Jim Haas  
Taylor Hanex  
Jane Haugan  
Martha Heavrin

Hieronymus Family  
Fund, Inc.

Harold and Merle Hochman  
Donald Holmgren  
Violetta Howard  
Hiroko Ishigo  
Herrick and Elaine Jackson  
Marie Jacobs  
Erika Johnson  
Anne Jones  
Joseph F. Santy III Donor  
Advised Fund

JPMorgan Chase & Co.  
Judith Kickert  
Christine Klein  
Lee Lasher  
Marilyn Lauesen  
Katherine Lawrence  
Katharine Leader  
Dolores Leite  
Bei and Feng Ling  
Josh Liptzin  
Mr. Joseph Loonan  
Kathrine Lowery  
Mary Ann Mahoney  
Ralph G. and Wilma J.  
Maibaum Foundation

Pamela Malinchak  
Gerald Marinoff  
Kathleen McCarthy  
J.M. McDonald  
Foundation, Inc.

Rusty and Libby McKee  
John Meyer  
Victoria Milam  
Gayle Morstad  
New York Football  
Giants, Inc.

Curtis O'Hara Foundation  
Old Oaks Country Club  
Foundation

Robert and Francine  
Oldham

George and Barbara Paletta  
Charitable Fund

M. Linda Parker  
Pender Pet Caring  
Foundation

Janice and Nicholas Pepe  
Nancy Perkins  
Merna and Steven Pickett  
Marie Poos  
Priolo Family Foundation  
The Raffiani Family  
Foundation

Randall Family Fund  
Ransom Charitable Trust  
Raymond Family Foundation  
Michael and Patty Reed  
Fran Reis  
Helen E. and Stanley H.  
Grossman Fund of the  
Rhode Island Community  
Foundation

Ridgefield Thrift Shop  
John Roberts  
Nancy and Bruce Roberts  
Helen Root  
The Benjamin M. Rosen  
Family Foundation

Laurie and Marc Rovner  
Margaret Rush  
Andrew Sabin



Joseph Schmidt  
 Carl & Verna Schmidt  
 Foundation  
 Sebastian Schroder  
 Schwab Charitable  
 Linda Seaman  
 Sexton Family Foundation  
 Debra Shearer  
 Cormac Shields  
 Barbara Shope  
 Beverly Simone  
 Nicholas Skinner  
 Harold Skolnick  
 The Sloman Foundation  
 Alice and Joseph Smith  
 Robert and Barbara Smith  
 Catherine and Thomas McC.  
 Souther  
 Stahl Family Charitable  
 Foundation  
 Wendy Starling  
 Howard Stern  
 Mickie Stokes  
 Cynthia Sullivan and  
 Robert Rollman  
 Anne Swan  
 Margaretta Taylor  
 Marylin Taylor  
 Milton Tenenbaum  
 Charitable Foundation  
 Amy Thaler  
 Nadine Tilley  
 Charlie Tonkin  
 Mary Ann Trapp  
 Patsy Vacarella  
 Ruth Villaros  
 Voertman Family Fund  
 Stephen Waltman  
 Rosemary Walztoni  
 Mr. & Mrs. Larry and Margie  
 Weinreb  
 Nina W. Werblow  
 Charitable Trust  
 Carlisle Wildeman  
 Roger Williams  
 Charlie and Patty Wright  
 Patricia Wright  
 Maureen Yeager  
 Mark and Phyllis Zames  
 Anna Zeiler

#### **\$2,500 to \$4,999**

Carol Adragna  
 Sylvia Almendinger  
 The Annabelle Foundation  
 Brenda Anthony  
 Joan Arndorfer  
 Annetta Atchison  
 Christine Attardo  
 Linda Atteberry  
 Richard Bassett  
 Alben F. and Clara G. Bates  
 Foundation  
 Charles Beauchamp  
 Ned Bennett  
 Sydney Berg  
 The John N. Blackman, Sr.  
 Foundation  
 Boehringer Ingelheim Cares  
 Foundation  
 Anna Brann  
 William H. and Wilhelmina A.  
 Broderick Family Fund

LucyAnna and Russ  
 Bronstein  
 Broughton Foundation  
 Harold Brunssen  
 James Burke  
 Mari Castrovilla  
 Lillian Cavallero  
 Shirley Conrad  
 Karen Cook  
 Marlene Countermine  
 Crane Fund for Widows and  
 Children  
 Miriam Crowe  
 Joan Crowell  
 Judith and Donald Cumming  
 Nicholas and April D'Amato  
 Philip Davis  
 Laura De Reitzes  
 Edward Debartolo  
 Michael D'Elia  
 The DeMarco Family  
 Doris Dennee  
 Kat and Jason Di Piazza  
 Dede Duson  
 Susan Ellis  
 Dianne M. Ende  
 Burton Eno  
 Enterprise Fleet  
 Management, Inc.  
 Fathers United For Equal  
 Rights Foundation  
 Peter and Louise Fecanin  
 Fidelity Brokerage  
 Services L.L.C.  
 Edgar Field  
 Jennifer Firestone  
 Betty Fogleman  
 Fortney Family Foundation  
 Dr. Thomas Friedrichs  
 Karyn Gaugler  
 Karina Glaser  
 W. Kearney Glenn  
 Pamela Goldstein  
 Martin and Michele  
 Greenberg  
 George Ann Griffin  
 David Groves and Sheila  
 Vannoy  
 The Gumbo Foundation  
 Vahan Gureghian  
 LLEAN Hanley  
 Alfred Hanson  
 Lawrence Hanson  
 Patricia Harrington  
 Harris Mathews Charitable  
 Foundation  
 Carolyn Hartner  
 The Morris A. Hazan Family  
 Foundation  
 William and Rosemary  
 Heinzerling  
 The Hilsberg Family  
 Charitable Giving Fund  
 Meg and John Hirschfeld  
 Wayne Hockmeyer  
 Mary and Philip Hogan  
 Linda Honeywill  
 Richard and Rachel  
 Honquest  
 Holly Ingham  
 Mike Irish  
 Alison James and Jim  
 Reesman

Elaine Jerrold  
 Blanche Maria Johnson  
 Julie Johnson  
 Trevor and Robin Johnson  
 Fannie and Stephen Kahn  
 Charitable Foundation  
 Jeff Karnes  
 David and Barbara Katz  
 Janell Keith  
 Alfred F. Kelly, Jr.  
 Margaret Kelly  
 Edward and Brigid Kenney  
 Leona Kern  
 Nicole Kidman  
 Cecilia King-Porter, MD  
 William Koehler  
 Kevin and Stacey Kotler  
 Marlo Krueger  
 Regina Lancaster  
 Margaret Lapcewich  
 Thomas and Nikki Lasala  
 James and Jan Leffler  
 Charitable Fund of  
 the Sioux Falls Area  
 Community Foundation  
 Leuthold Family Foundation  
 Betty Levinson  
 Michael J. and Patricia  
 Levitt Family Charitable  
 Foundation  
 Cristy Lockwood  
 Janet Lokay  
 William Magruder  
 Kay Malmquist  
 Peter and Gail Malnati  
 David Mann  
 Warren and Renee Marcus  
 Caren Mason  
 Debby Massa  
 Lilo Masters Fund  
 Susan Matheson and Jerome  
 Pollitt  
 Joan McCallum  
 Candace McMaster  
 R. K. Mellon Family  
 Foundation  
 Linn Meyer  
 Patricia Meyer  
 Daniel Milgrom  
 James Mindling  
 Ruth Mitchell  
 The Anne R. Monroe  
 Foundation  
 Jack Murphy  
 Howie and Judy Naugle  
 Louisa Neel  
 Janet Newcity and  
 Christopher Gelpi  
 Lynn and Robert Newman  
 Sidney Nisbet  
 Robert Oates  
 Charles and Richard  
 Oestreich Foundation  
 Leslie O'Loughlin  
 Yuliya Oryol  
 John Ozolek  
 Cinnie Parkins  
 Moses L. Parshelsky  
 Foundation  
 Craig Patterson  
 Martha and Curtiss Paye  
 James and Arlene Payne  
 The Pepper Family

Margaret Petrocelli  
 David and Lynne Petronella  
 Lisa Petrovich  
 Cheryl L. Pitz  
 Vera Plescia  
 Kamonsin Ploy  
 Charles Poret  
 Donna Pritula  
 Rainy Day Fund of the  
 Community Foundations  
 of the Hudson Valley  
 Michael Randazzo  
 Raymond James  
 Gilles Renaud  
 Takako Richards  
 James and Ruth Richardson  
 Michael Roach  
 Leo and Christine Rocca  
 Mary Rojas  
 Ann Rosche  
 Larry Schnur and Donna  
 Roth  
 Floyd Safford  
 Joseph Salgado  
 Kathy Sanchez  
 Tatsuo Sato  
 James Schuler  
 The Seattle Foundation  
 Deborah Sentochnik  
 Walter and Sally Shipley  
 Louis Shore  
 The Harvey and Elizabeth  
 Prior Shriber Charitable  
 Foundation  
 Claudia Simons  
 Annabelle Smith  
 Katherine Smith  
 Patsiann Smith  
 Gordon S. and Wilma V.  
 Smith Family Endowment  
 Lena Sorrentino  
 Kate Speer  
 Mary Spencer  
 Joanne Starr  
 Martha Steele and Robert  
 Stymeist  
 Scott Stern  
 Rosanne Summerville  
 Christy and Ken Taucher  
 Donor Advised Fund  
 of Central Carolina  
 Community Foundation  
 Carol Teter  
 T Thaxton  
 Nicole Torracco  
 Trailheads  
 Peggy Turner  
 Turner Construction  
 Company  
 Phyllis Varacalli  
 Reino Wantin  
 Robert Watkinson  
 Lori Weiss  
 David and Sylvia Weisz  
 Family Foundation  
 WestRock Tax & Consulting  
 Jan Wheeler  
 Beverly Wilson  
 Gail Wittmuss  
 Craig and Barbara Wolf  
 Ronnie Wood  
 Catherine Woods  
 Beverley Wotherspoon



## Volunteer Spotlight

### Arlene Pisanelli

Arlene personifies compassion: through her 40-year nursing career, she has always felt the urge to help others. She worked at White Plains Hospital as an emergency room nurse, a hospital supervisor, head nurse in the post-anesthesia care unit, and as a nurse in both labor and delivery and ambulatory surgery.

She has also worn many hats as a 26-year Guiding Eyes volunteer. Since 1997, when she began as a Home Socialization volunteer, Arlene has supported Guiding Eyes as a Foster; assisted in the Breeding Kennel, Whelping Kennel, at the annual Eye Clinic, as a Volunteer Driver and Weekend Receptionist; and as an Ambassador at events. “I feel as though I’m part of something special,” she says.

Arlene discovered Guiding Eyes while working in White Plains, where she regularly crossed paths with a working guide dog team. “I thought, what a wonderful organization Guiding Eyes must be, to enable people to live their lives and go places. When I retired from nursing, I knew I needed to be near these dogs.”

She noted that while Guiding Eyes has changed through the years - particularly the development of the “state of the art” Canine Development Center - one thing has remained consistent: “The staff are so dedicated. They go above and beyond to make Guiding Eyes the wonderful place that it is.”

When asked for advice for other potential volunteers, Arlene reflects, “Volunteering at Guiding Eyes enriches your life. It’s such a beautiful thing when you know that dog you supported can go and do such an important job.”



Louise and Kurt Wulff  
Georgia Young  
Paul & Susan Younkin  
Charitable Fund at  
National Philanthropic  
Trust  
Krystal Zahniser  
Charles M. and Esther Zell  
Foundation

#### **\$1,000 to \$2,499**

Jennifer Ach  
Helen Adair Foundation of  
the St. Paul Foundation  
Carol Adams Boring  
Sumanth Addanki  
Shelley Adelson  
Barry Aerni  
Aero Hardware and  
Parts Co.  
Nancy Agrawal

Anne Aguilar  
Mardi Albers  
Sharon Allsopp  
Joseph Alvarado and  
Margaret Sullivan  
Christine Amante  
Vincent Amatucci  
The Amber Charitable Fund  
Deanna Amos  
Michael Amster  
Keith Anderson  
Andover Haunted House  
Foundation  
Richard Andracki, Esq.  
Nancy Andrews  
Claire Angel  
The Angell Foundation  
Michael Anson  
Max Appel  
Karen Appelman  
Sharon Applegate

Lois and Conrad  
Aschenbach  
Jeff Arnett and Ruth  
Ashford  
Melody Atwell  
Gary Auman  
Joanne Bacher  
Gwen Bagley  
Susan B. Bailey  
Sheryl Bair  
Eliza Baird  
Carol Baker  
James and Veronica Baker  
Linda Baker  
Stephen Barfield  
Barbara Barker  
Gerry Barnes  
Kay Barnes  
John Bart  
Ed Bartosiewicz  
Renato Baserga

Anne Basiliere  
John and Nellie Bastien  
Memorial Foundation  
Kathleen Bates  
Ronald Bates  
Belinda Bathie  
Jon Bauer  
Robert Baum  
Marin Baumer  
Baumer Charitable Fund  
Barbara M. Bays  
Randy Beasley  
Richard Beck  
Sharon Becker  
Dennis Belgard  
Dorothy Bell  
Linda Bell  
Antonia Beltrone Sabre  
Selina Beltrone-Plotkin  
John Beman  
Helen Bemis



## Opportunities to support the life-changing work of Guiding Eyes

Here are some ways that our donors have chosen to support our mission of providing exceptional guide dogs to those with vision loss:

**\$500**

Sponsor a Graduation Ceremony

**\$500 to \$2,000**

Personalize a Leaf or Stone from our “Honor Tree” for a beloved pet or person

**\$1,000 to \$2,500**

Dedicate a cute Paw on our “Paws of Fame” wall to honor a loved one

**\$5,000**

Special Name a Guiding Eyes Puppy

**\$10,000**

Sponsor the Home or On-Campus Training of a Guide Dog Team

**\$50,000**

Sponsor a Guiding Eyes Handler-Guide Dog Team, from Breeding through Training

**Visit “Ways to Give” on our website or contact Guiding Eyes to learn more.**

Inez Benjamin Foundation  
Mark and Patti Bennett  
Dianne Benoni  
Dorothy Benson  
Janet Benton  
Benvenuto Family Fund  
Rosemary Berardi  
Joanne Berghold  
Debra Bernstein  
Harold Bernthal  
Robynn Berquist  
Kankan and Samina  
Bhattacharyya  
Myra Biblowit  
Kenneth Bielemeier  
The Presbyterian Church of  
Mount Kisco  
Catherine Biernacki  
Sue Billings, D. V. M.  
Terri and Irwin Binder  
Lynn Birdsong  
Lee and Susan Bishop  
Sue Bishop  
Gretchen Black  
Lisa Black  
Roderick H. Blackburn  
Fund at New Hampshire  
Charitable Foundation  
Deborah and Mark Blackman  
Marilynn Blackmon  
Lynn Blackston  
Lynn Blades  
John Blake  
Joyce Blankenship  
Stephen Blaskevitch Jr.  
Bunny and Jeffrey Blood  
Claire L. Boland  
Kyle Boleware  
Marie Bonazinga  
Robert Bonk  
Nicholas Boraski  
Cheryl Bosak  
Gary Bosak  
Mary Bourque  
William Bousquette  
Mike Boyce  
Craig Bradley  
Frances Bradley  
Kim Bradley  
M. Jacqueline Bradley  
Sharon Bradley  
David Bramer  
Martha Brandon  
Christos Bratiotis  
Richard Bressler  
Gedeon Brezil  
Marlene Bricmont  
Brock-Hunsacker  
Foundation at National  
Philanthropic Trust  
Diane Brockway  
James Brockway  
Sharon Bromberg  
David Brooks  
Linda Browdy  
Craig and Janet Brown  
Harold Brown  
Kevin Brown, M.D.  
Mary Brown  
Sue and Leland Brown  
Brown & Brown of  
New York, Inc.  
Patrick Browne

Mary Bruchmann  
Robert Bruns  
Deborah Bryan  
Bonita Bula  
Theodore Bunnell  
Nancy Burdett  
Raymond Burke  
Richard and Pamela Burke  
Paula and Christina Burkleo  
Lynda Burner  
Steven Burnley  
John Burtis  
Rose Burton  
Charles Busacca  
Larry R. and Peggy J.  
Busscher  
Sharon Butcher  
Susan Bycraft  
Frank Byers  
Edward Cahill  
Virginia Caldwell  
Tim and Deborah Callahan  
Rachael Camiener  
Linda Campbell  
Michael and Dana Campbell  
Nadine Cancell  
Michelle Capdeville  
Jacob Carlin  
David and Martha Carnahan  
Mercedes Carota  
Michael and Mary Carpenter  
Anne and Mark Carron  
Karin Carson  
William Carson  
Stephen Cartolano  
Jerri Carver  
Cattaraugus Region  
Community Foundation -  
Mildred Milliman Fund  
Ottis Caughron  
Margaret Cavenagh  
James Caya  
Deardre Chao  
Charlton Chatfield  
Vincent Checchi  
Denise Cherewaty  
Ronald Chernow  
Childers-Lackland  
Foundation  
William Chiles  
Stanley Chow  
Christ First United  
Randolph Christen  
Herman Christensen  
Paul and Vicki Chrobak  
Steven Ciancio  
Albert Clark  
Daniel Clark  
Dorothy Clark  
Jo Ann Clark  
Frederick Clayton  
Merle Clearfield  
Edward and Cari Cleary  
The Harry Cobey  
Foundation  
Michael Cobler  
Michele Cocco  
Hans Coffeng  
Faith Colish Fund of The  
New York Community  
Trust  
Patrica Colleton  
Judith Collins



Vicki Collins	Mary Dolce	Fidelity Charitable	Judith Gladstone
Janice Collura	Michael Donahue	National Financial Services	Lynne Glennon
George and Donna Colon	Jennifer Donald	Judy Findley	Mr. and Mrs. Michael
Cathelene Compton	The Harry Donenfeld	Karen and Neil Fine	Glosserman
Leon Condon	Foundation	William Fink	Urbano Godoy
Bruce Cone	Kathryn Donnelly	John Fish	Irwin Goldstein
The Bruce and Leigh Cone	Thomas Donnelly	Candace Fisher	Ruth and Sheldon Goldstein
Family Foundation	Helen Doppelt	DJ Fitzpatrick Fund at	Foundation
Jean Conley	Michael Dorula	Renaissance Charitable	Marilyn Goodland
Michael Conlon	Faith Doub	Foundation Inc.	Myra and Drew Goodman
Kathleen Conrad	Kathy Dougan	Judy Flath	Bobbie Gottschling
Nancy Conro	David and Deborah Douglas	Theodora Flores	Connie Goyda
Virginia Coogler	Virginia Douglass	John Slaughter and Vivian	Mr. and Mrs. Granse
Virginia Corey	John Downey Jr.	Florez	William* and Judy Gray
Theodora Corroon	Anthony Dresden	Steve Floyd	Greater Horizons
Corymore Foundation	Cheryl Dubs	Annette Flynn	James Greco
Deborah Coughlin	Mary Ann Dudko	Vicent Foglia	Stacy Greenberg
Baldemar Covarrubias	Otto and Hanna Duetsch	Roger Follis	June Gregory
Robert Craig	Charity Fund	L. Forbes	Monika Grider
Kathryn Craven	Bev Dufilho	William and Mary Forcellon	Sean and Miriam Grogan
Leslie Cronin	Edward Dunckelman	Annette Ford	Holly and Tom Groos
William E. Cross	Tim Dunn	Foreman Foundation	Howard Gross
Foundation, Inc.	David Durkin	at Raymond James	Natalie Hall
Larry Crouch	Louis Durko	Charitable	Elizabeth Hamberry
Marion Croxton	Wendy and John Duryea	Noel Foreman	Myrna and Mickey
The Crystal Family	Robert Duthie	Frank B. and Susan Fowler	Hammerman
Foundation	L. Dwyer	John Fowler*	Anne Hammond
William Curley	Lois Dyk	Eleanor Fox	Susan Handford
David Currie	Earth Animal Ventures, Inc.	Robert Y. Fox Charitable	Kathryn Hanley
Patricia Curtis	George Eckerdt	Fund of the American	J. Hanreddy
Custodio & Dubey LLP	The Anne R. Eckfedlt Fund	Endowment Foundation	Shirley Hanson
Eleanor Cutshaw	of InFaith Community	Susan Fraker	Janet Harden
G. Richard Cutter	Foundation	Michael Francini	Marguerite Hark
Sherry Cyza	The Robert and Gail	Renate Franco	Susan Harmon
Antoinette and George Daab	Edelstein Foundation	Diane Frank	Larry W. Harris
Jennifer Daniel	Billie Edwards	Laura Frank	Rolfe Harris
Mark D'Antonio	Michael Edwards	Patricia Frank	Patricia Hart
Peter D'Aquanni	Karen Eger	Diane Frankenstein	Trudy Hart
Elaine Davey	Ina Ehrlich	Shawnee Frantom	Judy Hartman
Barry and Caroline Davis	Susan Eliason	David Frattaroli	Charitable Fund
Family Foundation	Elaine Ellenbogen	Yvonna Frazer	John and Nancy Hartung
Carol Davis	Ryan and Denise Ellington	Debbie Freedman	James Harwell
Christine Davis	Deni Elliott	Kathryn Freiburger	Patricia Haswell
Phyllis Davis	Abraham M. & Rose Ellis	David and Judy French	Ralph Haswell
Sharon Davis	Foundation	Michael Friedl	Jason Hauben
Thomas Davis	Theresa Elsrode	Richard and Ilona Fucci	Andreas Hausler
C. De Burlo	Elaine Emrick	Annette Furst and L. J. Miller	David J. Hayes
Mary Lynn De Loatch	Brian Endres	Charles Futrell	Sue Hayes
Jill Decesare	Billie Erwin	Cornelia Futterman	Stephen Haymes
Larry Dee	Joann Erwin	F. Gaitan	The Ellie and Les Hayt
Deborah Deems	Lisbeth Esperti	Kyle Galbraith	Family Foundation
Tom Deering	Louis Esposito	Susan Galicki	Neal Heffron
Suzanne Deis	Billie-Ann Evans	John Galli	John Heisch
Rosa Delaney	Cliff Evans	Louise Galli	Peter and Lynn Hendricks
Sara Delk	John Evans	Lois Galvin	James Hendrickson
Christina Dell	Nancy Ewing	John Gannett Jr.	Donald Henry
Janet Demuth	Barbara Faber	Robert Garbacz	Samuel Hensley
Denise DeSalvo	Eckhard Fadtke	Patricia Gareau	Homer Hershey
Susan Desjardins	Fairmount Fire	Jan Garvey	Thomas Hester
Paul Deutsch	Department, Inc.	Gerald Geist	Mr. and Mrs. William Heyman
Mary Di Iulio	Francine Falchini	Molly Gennaro	Paul Hieromnimon
Janet Dicken	Karen Faloon	Maxine Gensior	Robert Higgins
Susan Dill	Sandra Farmer	Karla Gentile	Harry Higgs
Rebecca Dille	Tracey Farrell	Steven Geyster	Christine M. and
John and Lynn Dillon	Peter Faulkner	Anita Ghilardi	Paul Zack Hill
Steven Dills	David Fein and Elizabeth	William Gibbons	Martha Hincer
Nicholas DiMiceli	Oestreich	Joseph Giglio	Frances Hitchcock
Lisa Dinoto	Gary J. and Susan O.	Pamela Giles	Earl Hoffman
Gretchen Docter	Ferrentino Foundation	Paulette Gillig	Ralph Hofheins
Marcia Docter	William Fescenmeyer	Irma Gilmore	Suzanne Hogan
Irene Dodd	Terrence Feters	Mary Ginn	Kathryn Hollingsworth
Dorothy Dodson	The Feuerring Foundation	Stanley Ginsberg	Barbara Holloway
John and Rose Doheny	Nicole Fiallos	Christina Gish	John W. and Theresa Holly



David L. Holman	Arthur Kelly	Nancy Lewis	Linda McCorkle
J. Holmes	Sylvia Kendall	Norma Lewis	Carla McEwen
N. Honeck	Carol and Scott Kennedy	Sandra Lewis	Mr. and Mrs. Richard McGregor
M. Honeycutt	Paul Kennedy	Gene Lhotka	Ramsey McGrory
Terry Hopf	Kathleen Kenney	Laura Lichtenstein	Anne McKenna
Barbara Hopper	Susan Keppler	Marc Lifset	Monty McKinley
Jacqueline Horden	Dennis Kern	Jorge Limon	Vanessa McLean
Linda Houle	Janet Kern	Alice Lin	The McLean Foundation
Jim and Jan Hovda	Bruce Kerr	Karen Lindeberg	Helen McMillian
Dale Hoxie	Meri Kessler	Mathew and Carolyn Linett	David and Susan McMunn
Michael Hronec	Murray and Jeanie Kilgour	Mary Linge and Gloria McCanna	Ursula McNeil
Mark Huber	Haekyung Kim	Lionheart Charities, Inc.	Rich Meeker
Carol Hudak	Robert Kimball	Kathleen Lisak	Allan Mehrrens
H. Glenn Huddleston	Betty King	Becky Little	Robert Meier
David Humphrey	Dennis and Mary King	Anne Lloyd	Dorothy Meindl
Mary Hunkeler	William King	Rodney and Maureen Lockwood	Joel Meisel
Judy Hurley	David Kingston	Loeb Family Fund at The Pittsburgh Foundation	Kathy Melchiorre
Donald Husmann	John E. Kirzl	Cheryl Londen	Michele Menzi
Charlotte Inlow	Karen Kish	Charles Long	Marion Mereday
Jack Intrator and Debrah Welling	Christine Klein	Janette and David Long	Patricia Merola
Teresa Ittner	Kleinow Family Foundation	David Loomis	Robert Merrill
J.W. Mitchell Company	Stephen Kling and Nancy Miller	Joy Lovejoy	Metzger-Price Fund, Inc.
Virginia Jacko	Gerard Klingman	Lynne Lovell	Christian Meyer
Mary Jackson	Donna Knapp	Leonard and Laura Loventhal	Robert Meyerhoff
Nancy Jackson	Luther Kneece	Leonard Luchowski	Sarah Meyerhoff
William and Judith Jackson	Lisa Knight	Richard and Sandy Ludwick	Dennis Meyers
Douglas Jacobs	Nikole Knobloch	Brad Luecke	John Michler
L.C. & Margaret B. Jacobson Memorial Foundation	Judy Knowles	Helen Lundeen	Mid-Hudson Kennel Association, LTD
Marian Jamison	Merrily Kobashi	William Mabry	The Gerald & Kay Mikula Charitable Fund
Jonathan Jankus	Audrey Koch	Barbara Macleod	Cheryl Miller
Janet Jarvie	Susan Koehler	Christina Madden	Gene Miller
Barbara Jarvis	Joel and Joanne Kolb	Anne Magee	Jennifer Miller
Cathy Jennings	Jennifer Kolber	Virginia Maitz	Peter Millones
Elizabeth Jennings	Allan Koptish	Patricia Majerus	Stanley and Martha Mills
Keith Jennings	Dennis Koskey	Barbara Makovec	Susan Mills
Kevin Jensen	Richard Kourbage	Janet Malang	Magaly Miranda
Hans Jepson	Jill Kovacich	Shiyoe Malinasky	Doreen Mirante
Jewish Communal Fund	R. Patrick and Amy Krause	Peter Malkin	Cynthia Mirsky
Wanda John	Brian Krebs	Manchester Richmond Lodge 699	Edward Mishmash
Anne Johnson	Ted and Charlotte Kresse	Mark Manion	Carol Miskill
Joanne Johnson	Mark Kreter	Mark Manthey	Ken Mitchell
Katherine Johnson	Harriet Kreuter	Joyce Mappes	Michael and Joyce Mitchell
David, Sharon and Rachel Jollie	Karl Kristoffersen	Marge and John Callahan Charitable Fund	Phyllis Miyauchi
Almira Jones	William and Sheryl Krizman	Donald Margolis	Jacqui Modesti
Darla Jones	Day Krolik	Carol Marker	Karen Monette
Patsy Jones	Kenneth Kubarych	Marion Martin	Alicia Montalvo
Phyllis Jones	Ronald Kuenkler	Vicki Martin	Barbara Moore
Andrea Joyce	Mari Kuhnley	Joseph Martinez	Carolyn Moore
Judy Judd	Marybeth Kynerd	Anthony Martuccio	Donna Moore
Andrew Judelson	Katherine Lacek	Katherine Martyn	Kenneth Moore
Susan Kahn	Lynn Lamar	Carol Mascioli	Lisa Morales
Joseph Kalista	Roma Landry	Donna Mason	Roberto Morales
Lawrence Kalivoda	Curt and Diane Landtroop	Jane Masri	Pamela Morgan
Glenda Kaplan	Marvin P. Langanki	Mark Massarella	John Morgridge
Rita and Henry Kaplan	William and Pam Langley	Donna Masse	Jenny Morris
Warren Kaplan	Jeffery Lantz	John Mastromarino	Lois Morris
Christine Karas	Warren and Barbara Larson	Susan Match	Richard Morris
Brown Karenanne	William Laux	James Matthews	Robert Morrison
Janet Katz	Michael Lawlor	Kade Matthews	Bonnie Mortag
H. Kaufman	Imogene B. Laws	Scott Mayer	Richard Mortimer
Lucy Keefe	Jerome Lawson	Billy Mayo	Alida Morzenti
Betty Keenan	Leona and Melvin Lazar	Hugh McAfee	William Moyer
Martin Kehoe and Mary Kelly-Kehoe	David Lee	Nancy McAllister	Richard Mueller
Michael Keith	Diane Lee	Richard McCall	Marie Mulcahy
Peggy Keith	James Lee	Dianne McClelland	Agnes Mulrone
Robert Keith	Cynthia and Andy Lees	Mary McClure	Nicole Murch
Eileen Kelleher-Ornelles	Marcia Lefkowitz		Barbara Murray
Johanna Kelleman	Linda Leiseca		Marilyn and Paul Murray
Molly Kelley	Steven Leitz		Jan Muyskens
	Kenneth and Robin Leopold		Jeanne Carol Myers
	Daniel Levin		
	Jan Lewis		

Maizy Myers	Jurate Pezze	Daniel Rodgers	The David and Marilyn
David and Inez Myers	Daniel Phelan	Lee Rogers	Scott Charitable Fund
Foundation, a supporting	Michael Phillips	Sharon L. Rogers	of the Ayco Charitable
foundation of the Jewish	Sara Phillips	Ron Rohde	Foundation
Federation of Cleveland	Winfred Phillips	Mr. Thomas Rollins	Daniel Scully
Anthony Naples	Patricia Beck Phillips	Richard Romeo	Kristen Seddon
NECI	Foundation	Rose Rondano	Joan Seibert
Timothy Needles	Amos and Tami Pike	Randolph Roody	Lewis Seiler Jr
Jill Neely	Willard Pitzner	Bridget Roots	Sally Seitz
Stephen Neff	Monica Platt	Charles and Caryl Rose	Tamson Sell
Greg Nelson	Carolyn Pogar	Daniel Rosen	Gary and Virginia Semrow
John Nelson	Sheryl Polese	Mel Rosenfeld	Monica Sesko
Judy Nelson	Dick and Sue Porth	Linda Ross	Shawn Setterstrom
Brett and Denise Nemanich	John Posch, M.D.	John and Karen Rossetti	Stacey and Ralph Sevinor
Charlotte Prescott Newton	Carol Postell	Deborah Rossi	Powell and Bonnie Seymour
Cindy Newton	Anne Powell	Randee Rothman and Wendi	Alicia Shaeffer
Brett and Mary Nichols	Jennifer Powell and	Orlando	Madeleine Shaughnessy
Mary Nielson	Andrew Wiley	Roundup App Fund	Jay Shaw
Edythe Nimick	Mark Powell	Patsy Rowland	Joan Sheeran
Kathy Nimmer	Melissa Powell	Roy Family Charitable	Billy and Bonny Shelton
Cathy Nissley	Warren Pratt	Fund of the American	Mary Shemanski
Susan Noel	Danny and Pam Pressler	Endowment Foundation	Pat and George Shepherd
Louann Noll	Maureen Previti	Vicky Roy	Brenda Sheridan
Dan Norwood	Jeanine Price	Myrna Rubenstein	Jeff Shetzlich
Helen Nover	Marina Price	Arline Rubin	Linda Shimogawa
Linley Oberman	Mr. Neal Prince	Babette Rubin	Anne Shinn
John Oborny	Edgar Pritchard	Ann Ruchhoft	Barbara Shook
David O'Brian	Marilyn Propstra	Elaine Rudder	Marilyn Short
Bernadette O'Connor	Lynn Purcell	Louise Rudolph	Diane Shultz
Cheryl and Michael	Philip Purdom	Elinor Ruffing	Greg Shumaker
O'Connor	Linda S. and Michael Purvis	Mary Ruffo	Anne Sibbald
Arlene O'Dell	William Quain	John Rufi	David Siddons
Dennis O'Gorman	Roberta Quiat	Linda and Don Rumley	Lara Signorini
Alice O'Halloran	Melinda Raffae Trovini and	Maryanne Rush	Susan Silbermann
Cynthia Oliver	Melinda Trovini	Judith Rusher	Michael Silverstein
Frances Olsen	Kathy Ramsdell	Maurice Russell	Phyllis Silverstein*
Ray Olson	Van Broughton Ramsey	Winthrop Rutherford	Katharine Simonds
Jean O'Malley	Linda Randell	Jeanne Ryan	David Simone
Cyrus Omidyar	Douglas Ratcliffe	Rosa Saenz	Gary Simpson
Dawn Oram	Vincent Reale	Elizabeth Safran	Candace Sinclair
Gwynne O'Reagan	Nancy Reaves	Patricia Saisselin	Elizabeth Sipin
Mr. and Mrs. Philip O'Rourke	Deborah Reher	Beth Saltzman	James Skrocki
Isaac Osaki	Louise Reichl	Harold Sandstrom	Michael Sloane
Susan Otten	Claire Reid-Adkins	Meg Sansale	Anne C. Smith
Sue Ouellette	Donna Reimer	Joyce Santiago	Gail Phillips and Miles Smith
Janet Palmaccio	Mark Rein	The Sanzone Family	Helen Smith
Geraldine Palmer	Donald Reinhard	Foundation	Kemp and Catherine Smith
Pampered Chef	Barbara Reining	Donald Sartell	Ken Smith
Sandra Parisi	Jeanne Reiser	Julie Saunders	Leola Smith
Paul Parker	Trudy Remmick	Daniel Savoie	Richard Smith
David Parkinson	Julie Rendina	Janice Sayatovic	Stacey Smith
Richard Parower	Phyllis Reppucci	Jeffrey Schaade	Thomas Smith
Erika Parrish Bunnell	Ruth Retzke	Noel Schachner	Howard Snyder
Nancy Passerini	The Reutzel Foundation	Genevieve Schechter	David Sokol
Shannon Patton	Jeanie Rhodes	Richard Schechter	Elaine Soldi
Paul G. Arpin	Vivian Louise Rhodes	Richard Schechter	David Sorley
Charitable Trust	Douglas Ricci	Robert Scheigert*	Mary Spalding
Brian Payne	Roseann Ricciardone	Robert Scherer	Richard Spilberg
Paul Payne	Janet and Thomas Rice	The Robert M. Schiffman	Marilyn Sponzo
Sandra Pearch	Peggy Rice	Foundation, Inc.	Michael E. and Doreen H.R.
Stanley Pearlman	Eric Riddle	Steven Schillaci	Sproule Family Fund
Robert Pearson	Linda Rieger	Lynn Schlanger	of the Ayco Charitable
Karen Pederson	Craig Ring	Gary Schmalzriedt	Foundation
Carolyn Pedone	Carolyn Rini	Ethan Schrader	Susan St. Mary
Georgia Peirce	Bruce Rinne	Mary Schreiber	Ross Staffhorst
Albert Perri	Jane Ritchie	Dorothy Schroeder	Glenn Stambaugh
William Persampieri	Carolyn Robbins	Schulman Foundation	Hans Stark
Judith Perszyk	Del and La Rue Roberts	Anita Schultz	Paige Starr
Carol Petersen	Dawn Robertson	Kathi Schumann	Lorraine Staub
Kai Petersen	Jim Robinson	Evelyn Schwager	Jana Stauty
David Petrick	Willard Robinson	Charlene Schwartz	Sharon Stealey
Carol Petrillo	Zed Robinson Jr.		Cindy Steckel
George Petrow	David Rock		Dennis Steger



Gordon Steib  
James Steinke  
P. Stephenson  
Lynn Stern and Jeremy Lang  
Kathy Steve  
Mildred Stevens  
Linda Stohon  
Nikki Stokoe  
Ralph Stone  
Regina Stone  
Hayes and Patricia Stover  
Ed and Pat Strasburger  
Memorial Fund at  
Raymond James  
Charitable  
Beth Stratton  
Marjorie Strelzyn  
Francis and Amy Strezo  
Emily Stroud  
Linda Sullivan  
Weilin Sung  
Amy and David Sunkle  
Jennifer Suozzo  
Barbara Swanson  
Junius B. Swygert  
John Sykes  
Meghan Szczech  
Mike Tadin  
The Taking Flight  
Foundation  
Nicolaos Tapazoglou  
Jephtha Tausig  
Patricia Ann Taylor  
Bryan Thale  
Jeanne Thivierge  
Hilaire Thomas

Linda Thomas  
Thomas Thomasma  
James Thompson  
Laura Thompson  
Vickie Thompson  
Patricia Thompson Longtin  
David L. Thorp  
Carla Thorpe  
Barbara Tomek  
Jonathan Totzke  
Joseph Tower  
John Travis  
Gail Triggs  
The Triple T Foundation  
Nancy Tritt  
Cathy Trumbull  
Robert Trzeciak  
William Tucker  
Shirley Turner  
Stephen Ucko  
Marilynn Unruh  
John and Linda Vacca  
Marianne Vakalis  
John Van Buskirk  
Judith Van Reusselaer  
Andrea Vasquez  
Richard and Pun Vaughan  
Helen Verven  
Viking Global Foundation  
Anthony Vitale  
Gisela Vogentanz  
Michaelene Wadolny  
Robert J. Waldeck  
Thad Wales  
Jane Wallace  
Suzanne Wallace

Melinda Walsh  
William Walsh  
Margaret Warnock  
Wash Depot Holdings, Inc.  
Sandra Waterfield  
Ross and Carol Weale  
Rachel Wegter  
Melissa Weidhorn  
J. Weinstein Foundation, Inc.  
Gregory Weiss  
Jane D. Weiss Family  
Foundation  
Randy and Sharon Weiss  
Patty Welch  
David Wentz  
John Werner  
Sandra Werner  
Tamera Wert  
Bernard Westner  
Lynne Weston-Pontikes  
Herb and Gayle White  
Paula White  
Betsy Whitmore  
Kenneth Whitney  
Whs Charity Fund  
Jerome and Barbara  
Wichgers  
Yvonne Wiesen  
Sue Wilkinson  
Charlene Williams  
Joanne Williams  
Margaret Williams  
Jim Willson  
Dennice Wilson  
Sylvia Wilson  
Sandra Wiser

Elaine Wisniewski  
Jack Witkin  
Jeannette Witkov  
Polly Wojnaroski  
Adam Wolfson  
Ruth Wood  
Richard Woods  
Miyoko Woolman  
Daniel Wurm  
Chul Yang  
John Yanni  
Margaret Yarina  
Phaedra Yates  
Jake Yellen  
Linda Young  
Laura Youngblood  
John Yurtchuk  
Laura Zach  
Mary Zampino  
Matt Zbojniec  
Doris Ziegler  
Patricia Zima  
Steve Cutler and Wendy  
Zimmermann  
Kristin Zisson  
Philip Zitello  
Ann Marie Zuidema  
Neal Zung  
Zvilin Fund of the Princeton  
Area Community  
Foundation

\* Deceased

## Lions Club

Avon Lions Club  
Ballston Spa Lions Club  
Belfast Lions Club  
Bloomfield Lions Club  
BMW Lions Charity  
Brookfield Lions Club  
Brookville-Timberlake  
Lions Club  
Clarendon Lions Club  
Clarendon Lions Club  
Clark Lions Club  
Cold Spring Lions Club  
Dansville Lioness Club  
Dansville Lions Club  
Deposit Lions Club  
East Aurora Lions Club  
Essex Lions Club  
Fairport Lions Club, Inc.  
Fallsburg Lions Charities Inc.  
Forest Lions Club  
Germantown Lions Club

Goshen Lions Club  
Granby Lions Club  
Green Valley La Canoa  
Lions Club  
Hadley-Luzerne Lions Club  
Hebron Lions Charities  
Hudson Lions Club  
Charities, Inc.  
Jacksonville Beaches Lions  
Club Inc.  
Kingston NH Lions  
Foundation Inc.  
Lakeland Lions Foundation  
Larchmont Mamaroneck  
Lions Club  
Lebanon Lions Club  
Lions Club of Middlefield  
Lions Club of Olcott  
Lions Club of St. Louis,  
Southside

Lions Club of Valhalla  
Charities Inc.  
Lions Club of Yorktown  
Charities Inc.  
Maggie Valley Lions Club  
Mamakating Lioness Club  
Medina Lions Club  
Middletown Lions Club  
Foundation  
Montville Mohegan-Pequot  
Lions Club  
Mt. Lebanon Lions Club  
Mystic Lions Community  
Foundation  
New York Japanese-  
American Lions Club  
Newtown Lions Club  
Northern Columbia  
Lions Club  
Ovid Willard Lions Club

Palmyra-Macedon (Pal-Mac)  
Lions Club  
Pine Bush Lions Club  
Plainfield Lions Club  
Powhatan Lions Club  
Rondout Valley Lions Club  
Rye City Lions Club  
Seymour CT Lions Club, Inc.  
Solvay Geddes Lions Club  
Somers Lions Charitable  
Foundation Inc.  
South Brunswick Lions Club  
South Buffalo Lackawanna  
Lions Club  
Suffern Lions Club  
Town of Wright/Schoharie  
Valley Lions Club  
Wallkill Lions Club  
Waterford Regional  
Lions Club  
Youngstown Lions Club Inc.

## In-Kind gifts

Liam and Laurie Brennan  
Earth Animal Ventures, Inc.  
Jolly Pets

The Kong Company  
Nybalone Products  
Pilots to the Rescue

Guiding Eyes is grateful to the more than 250,000 generous individuals who support us throughout the year. We have made every effort to ensure the completeness and accuracy of this list. However, if you notice an error, please accept our sincere apologies and notify us at [info@guidingeyes.org](mailto:info@guidingeyes.org).

## Matching Gift and Employee Giving Programs

3M Company	Ciena	Intel	PricewaterhouseCoopers
Abbott Laboratories	Cigna	IQVIA, Inc.	Progressive Insurance
AbbVie Inc.	CIT Bank	J. Crew	Prospect Hill Foundation
Accenture	Citizens Charitable Foundation	JC Penny	Prudential
Adobe Systems, Inc.	Citrix Systems, Inc.	JK Group, Inc.	QVC
Aerojet Rocketdyne	Cleveland-Cliffs Inc.	Johnson & Johnson	Raytheon
Agilent Technologies	Colgate-Palmolive Co.	JP Morgan Chase & Co.	RBC Capital Markets
AIG	Comcast	JustGive	Red Hat, Inc.
Air Products	Con Edison	Kaiser Permanente	Regeneron Pharmaceuticals
Alaska Airlines	ConocoPhillips	KeyBank	Roche Diagnostics
Allscripts Healthcare Solutions	Corning	KKR & Co. LP	S&T Bank
Ally Financial Inc.	Costco	L3Harris Technologies	Salesforce.org
AltaGas	CSAA Insurance Group	Lenovo	Santander Holdings
AmazonSmile Foundation	Davis Polk	Levi Strauss	Shell Oil Company
American Agricultural Insurance Company	Dell	LexisNexis	Standard Insurance Company
American Express	Discover Financial	Liberty Mutual Group, Inc.	Stanley Black & Decker, Inc.
American Family Insurance	DocuSign	Lincoln Financial Foundation	Starbucks
America's Charities	Dominion Energy	LPL Financial	State Farm
Ameriprise Financial	DTCC	Lumen	State Street
Amica Mutual Insurance Company	Duke Energy	Macquarie Capital	Subaru of America Inc.
Anheuser-Busch	Eaton Corporation	Marsh & McLennon	Sun Life Financial
Apollo	Ecolab	MassMutual	Symetra Life Insurance
Apple Inc.	Empire BlueCross BlueShield/Anthem, Inc.	Master Lock	Synchrony Financial
Arch Insurance Group, Inc.	Empower Retirement LLC	Mastercard	Takeda Pharmaceuticals U.S.A.
Ares Management	Equinix, Inc.	McCormick & Company, Inc.	Tapestry Foundation
Aspen Insurance	Ericsson	McDonald's Corporation	TD Bank Group
AstraZeneca Pharmaceuticals	Erie Insurance Co.	McKesson Foundation	TE Connectivity
AT&T	Estee Lauder	McKinsey & Company	TEGNA Foundation
Autodesk Foundation	Eversource Energy	Medtronic	Teleflex Foundation
Baird Foundation, Inc.	Exelon Foundation	Menlo Park VA Medical Center	Textron Inc.
Bank of America	ExxonMobil	Merck	The Capital Group Companies Charitable Foundation
Bayer	FM Global	MGM Resorts Foundation	The Clorox Company
BBVA Compass	Fox Corporation	Micron Technology	The Hartford
Becton, Dickinson, and Company	Freddie Mac Foundation	Microsoft	The Home Depot
Benevity	Frontstream Credit	Moderna	The Humana Foundation
Benjamin Moore Paints	GAF Materials	Morgan Stanley & Co.	The Walt Disney Company
Best Buy Foundation	Gap Inc.	Moss Adams	Thermo Fisher Scientific
Biogen MA Inc.	GBU Financial Life	MUFG Union Bank	Thrivent Choice
Blackbaud, Inc.	General Electric	Mutual of America	T-Mobile, USA
Blue Shield of California	Give Back Foundation	Nationwide Insurance	Toyota
BMO Financial Group	Give Lively Foundation, Inc.	Netflix	Travelers Insurance
BNY Mellon	Givinga Foundation	NetScout Systems	TripAdvisor
Boehringer Ingelheim Cares Foundation	Givinga Foundation	Network for Good	U.S. Bank
Boeing	Google, Inc.	New York Life Insurance Company	UBS
BorgWarner	Graco	Newport News Shipbuilding	United Health Group
Boston Scientific	Guardian Life Insurance Company of America	News Corp	Unum Group
BP Foundation	Guggenheim Partners, LLC	Nordson Corp.	USAA Foundation
Bright Funds Foundation	Guidehouse	Nordstrom	Vanguard
Bristol Myers Squibb Foundation	Hanover Insurance Group	Northrop Grumman	Varian Medical Systems, Inc.
Broadcom	Hartford Courant	Novartis	Veeva
CarMax	HCA Healthcare	Oracle	Veritas Technologies
Catepillar	Hearst Magazines Division	ORIX Foundation	Verizon
CBRE	Hewlett-Packard	Paul, Weiss, Rifkind, Wharton & Garrison	ViacomCBS
Chanel	Horizon Therapeutics	Paypal	VISA, Inc.
Charities Aid Foundation	HP Employee Charitable Program	Penguin Random House	VMLY&R Foundation
Charles Schwab & Co., Inc.	HSBC	Pentair	Voya Financial
Chevron	IBM	PepsiCo	Wells Fargo & Company
Chubb Insurance Group	Illinois Tool Works, Inc.	PerkinElmer	Workday, Inc.
	Illumina Foundation	Pfizer, Inc.	Xcel Energy Foundation
	IMF	Phillips 66	YourCause, LLC
	Indeed, Inc.	Pitney Bowes, Inc.	
	Insperty	Preformed Line Products Co.	





## Pathfinder Society Spotlight

### Sharon Zenger

“I’ve always known I wanted a guide dog,” says Oregon resident Sharon. “I have a unique background: I participated in puppy raising since I was nine years old, and I worked at a guide dog school for several summers. My goal was to become a teacher and show my students what a guide dog could do for them.”

Sharon has achieved her goal with the support of four German Shepherd guide dogs. She now teaches young people who are visually impaired and is an Orientation & Mobility (O&M) instructor – one of the few legally blind people in the nation to achieve that certification.

Her current guide, Reagan, is her second from Guiding Eyes. Reagan, a “happy and gorgeous girl,” accompanies Sharon to work; “she motivates my students who are interested in getting a guide dog to develop their O&M skills,” Sharon says.

When the COVID pandemic interrupted Sharon’s O&M classes, she again turned to Guiding Eyes for support. “The Guiding Eyes staff helped me figure out ways to continue to teach my students, so that they could keep up their skills,” she says.

As a show of her ongoing gratitude, Sharon joined the Pathfinder Society, friends who choose to make a planned gift. “I became a Pathfinder so that someone like me can get a well-trained dog that meets their individual needs,” she says. “Being part of the guide dog community for so long helped me pick Guiding Eyes as the right school to support my work and my life.”

## Pathfinders

We gratefully acknowledge our Pathfinder Society members (“Pathfinders”)—generous, forward-thinking supporters—who have included Guiding Eyes in their estate plans.

Ms. Renee Abernathy  
Jane Adams and William L. McNulty  
Mr. and Mrs. Ronald E. Ahlers  
Ms. Nell M. Alger  
Mrs. Cynthia Y. (Byron) Allen  
Jennifer and Brian Alves  
Christine G. Anastos  
Mr. Donald J. Augustin

Susan B. Bailey  
John Baker  
Chris Ball  
Mr. L. Eddie Ball  
Mr. and Mrs. Stephen W. Barker  
Mr. and Mrs. George E. Bashaw  
Lana Bauman  
Ms. Gayle Becker

Ruth Begany  
Jeffrey Benario and Kathy Flood  
Jennifer Bennett-Yafanero  
Ilene Berger  
Sandra Bernstein  
Gail and Charles Bisignano  
Ms. Linda Blakely  
Ms. Janice Blanton  
Gail Marie Blosser

Alida Bockino  
Susan Bogin  
Mr. and Mrs. Nathan J. Bolognini  
Judy Bon  
Ms. Ardis Bourland  
William J. Brand  
David T. Brandt  
R. F. Breuer  
Brad Brieman

Ann D. Broekhuizen  
 Barbara A. Brunner  
 Patrick Bucher  
 Mr. and Mrs. Michael Buckley  
 Susan Budin  
 Richard and Pamela Burke  
 Gail M. Burris  
 Donald R. Byrd  
 Brian and Pamela Canham  
 Tabitha (Annie) Carini  
 Mr. and Mrs. Ramon V. Carli  
 Anne and Mark Carron  
 Linda M. Cartwright  
 Barbara Castellano  
 Cindy Chamberlin  
 Ruth Chase  
 Barbara A. Cicalese  
 Judith and Warren Clark  
 Sylvia L. Clemetson\*  
 Mr. Armand Cohn  
 Anna Conklin  
 Rocco and JC Cornacchia  
 Mr. and Mrs. Tom Cote  
 Cindy Cravitt  
 Francis G. and Timothy P.  
 Crawford  
 William R. Crawford  
 Dianna Crocker and  
 Michael Nash  
 Mrs. Deidre H. Crofton  
 Maria Curreri  
 Eileen M. Curtin  
 Joseph and Paula D'Agostin  
 Patricia and John d'Auguste  
 Wendy S. David  
 Ellen Davis and Myra Kaplan  
 Ann Davis-Ramsey  
 Linda N. Deeter  
 Karen DeLisle  
 Mr. Michael DellaRipa  
 Angela DeVietro and  
 Judy Mitchell  
 John and Lynn Dillon  
 Linda M. Doster  
 Ms. Jeanne Dregalla  
 Ms. Patricia Driscoll  
 Sherrie Dulworth  
 Penny Dvoracek  
 Ms. Joyce Egeberg  
 Karen M. Eismann  
 Mr. and Mrs. Reid Elko  
 Deni Elliott  
 Ms. Dianne M. Ende  
 Bob and Ruth Escher  
 Christine Facondini  
 Norman and Susan Fainstein  
 Heidi Farnham  
 Lee Fatell  
 Karen Fiebig  
 Carmen Figueroa  
 Gail Ann Fisher  
 Mr. and Mrs. Richard Fisher  
 Ms. Sally J. Fisher  
 Maureen Fitzgerald  
 Julie Fleming  
 Ethan Flint  
 Mary L. Foley  
 Mrs. Suzanne Ford  
 Rita O'Brien Sims Franklin  
 Ina R. Friedman  
 Mark Fryman  
 Minnie Cobey Gallman

Sandra Gamble  
 Ms. Margaret Gardner  
 Dr. Joel Gavrielle-Gold  
 Betty Gerendasy  
 Phyllis M. Gibula  
 Frances A. Giovanetti  
 Ms. Mary V. Gloss  
 Stacy Mignon Glover  
 Mr. and Mrs. James Goldman  
 Mrs. Marian Goodloe  
 Mary Graefen  
 Marsha Graves  
 Margaret M. Grockett  
 Tom and Holly Groos  
 Edmund A. Grossman  
 Jim Haas  
 Carol V. Haberer  
 Mrs. Natalie Hall  
 Sandra G. Hall  
 Jean Hamburg  
 Mr. John K. Hammel  
 Hayes and Karen Hanley  
 Camilla Hardmeyer  
 Diana Harper  
 Barbara T. Hawkins  
 Bonni Heitman  
 Ms. Elaine Henderson  
 Harry E. Herzek\*  
 Jane Hettesheimer  
 Miss Carole J. Higgins  
 John and Nancy Hines  
 Fae L. Hoffman  
 Mrs. Marie Horhota  
 David C. Horn  
 Rebecca Horyczko  
 Carole Houghton  
 Jim and Jan Hovda  
 Sharon Howerton  
 Marianne Huber  
 Ms. Gail A. Hummer  
 Janet Humphreys  
 L. A. Hunt  
 Gunilla Isaksson  
 Dory Israel  
 Lynn M. Jackson  
 Cathy E. Jaster  
 Eileen D. Jauch  
 Lynda Jeppesen  
 Mrs. Mary Alice Johnson  
 Ms. Michelle Johnston  
 David and Barbara Katz  
 Arlene and Michael Kelly  
 Patty Kelly  
 Charles J. and Nancy  
 Kennedy  
 Tony and Fran Kerchner  
 Ms. Joanne Kish  
 Janet F. Kleiner  
 Carol and Bruce Koch  
 Flora Kowal  
 Hildegard Krause  
 Roger K. Krott \*  
 Russ Krull\*  
 Kenneth Laban  
 Larry and Ruth Ladd  
 Mrs. Shirley Laird  
 Mr. Marvin P. Langanki  
 Howard\* and Jeanette Lasher  
 Dr. Rebecca R. Leas  
 Ms. Carol Anne LeBlanc  
 Janice and Neil Levett  
 Christine B. Lewis

Mary Adams Loomba  
 Nancy S. Lothrop  
 Mr. and Mrs. John\* Luicci  
 M. Leona Luckason  
 Peggy Nance Lyle  
 Mr. Kurt Malison  
 Michael Mallies  
 David Mangeim  
 Dr. and Mrs. William L.  
 Mangold  
 Judith Margerum  
 Miranda H. Markart  
 Anna M. Markey  
 Caroline Marr  
 Barbara and Phillip Mathiews  
 Diane B. McGrath  
 Karen McIsaac and Ted Mays  
 Mrs. Sharon McKenna  
 Judy and Neal McKinley  
 Cheryl McKy  
 Charles and Michelle McNutt  
 Joanne Mendes  
 Mrs. Marcia Meracle  
 S. E. Metz  
 Jocelyn L. Miller  
 Cindy Minalt  
 Charlene Karen Mitchell  
 Gloria A. Moak  
 Michael Moraca  
 Linda Cooper Moriarty  
 Sarah and Jonathan Mugal  
 Suzanne Erin Murphy and  
 Brian Sowers  
 Jeanne Carol Myers  
 Ms. Karen M. Naja  
 Gerri Natiello  
 Dr. Norman Needel  
 Mrs. Margo M. Neubauer  
 Barbara L. Neuby  
 Charlotte Prescott Newton  
 Renee Normandy-Shane  
 Mike and Sheryl O'Connell  
 Brian O'Day  
 Ms. Laura Oftedahl  
 Bob Oldham  
 Barbara Pajak  
 Jerry A. Parish  
 Elizabeth Penn  
 Timothy Peterson  
 Terri Pigue and Ralph Sole  
 Cheryl L. Pitz  
 Ruth E. Pollow  
 Anne Powell  
 Angelo J. and Ellen  
 Purcigliotti  
 Diana Quagliariello  
 Rosemary Rafter  
 Phyllis and Don Ranum  
 Rev. David B. Rapp  
 Karin and Lawrence  
 Rappaport  
 Mr. Francis H. Rasmus, Jr.  
 Donna Raven  
 Alexis Read  
 Ellen Rice  
 Jerome Richter  
 Miss Augusta A. Rosasco  
 Ms. Edith Rosenfield  
 Cynthia and Ken Rosenthal  
 Sally Rosenthal  
 Mr. Leo E. Roy  
 Pamela Ruegg

Joe Ruzzo  
 Terry and Carolyn Ryan  
 Joan-Ann Ryan-Murphy  
 Gwen Samp  
 Ms. Doris R. Satterwhite  
 Eileen Schary  
 Ora Joan Schepps  
 Mr. and Mrs. John Schild  
 Mr. and Mrs. Richard Schmidt  
 Ronald Schofield  
 Leslie and Jerry Schratz  
 Mr. and Mrs. Richard  
 Schroeder  
 Richard H. Schwartz  
 Diane M. Senkow  
 Suzanne Shea  
 Ms. Sandra M. Simpson  
 Linda Slavin  
 Mr. and Mrs. William I. Small  
 Anne C. Smith  
 Kathy and Jeff Smith  
 Marjorie Stegall Sparks  
 Linda L. Spicer  
 Mrs. Carol P. Spisak  
 Mark F. Spisak Life  
 Insurance Trust  
 Darrell J. Stout  
 James E. Studdiford\*  
 Cynthia Sullivan and  
 Robert Rollmann  
 Nancy Sutton  
 Mrs. Karen J. Swope  
 Marie A. Tarantino  
 Lois Ruth Taylor  
 Vickie Thomas  
 Al Todd  
 Jill T. Tracey  
 Anne Travalia  
 Ms. Marylou Tripolino  
 Ms. Darlene J. Turner  
 Vicki M. Tyler  
 Steve Varvaro  
 Michaelene J. Wadolny  
 J. Rachelle Walker  
 Tom\* and Mary Lee Walton  
 Cheryl and Basil Wankewycz  
 Mrs. Loretta Warsaw  
 Christine M. Washburn  
 Kurt Wassen  
 Mr. Clayton Waxham  
 Diane Karen Webster  
 Mr. and Mrs. Michael Welt  
 Bobbie White  
 Herb and Gayle White  
 Lilita K. Wier  
 Anneke Williams  
 Michaelene D. Willy  
 Anita Wilton/Norma Violante  
 Karen J. Wiltse, COT  
 Mr. Fred Wolter  
 Judith and Winton Wood  
 Ginny A. Wright  
 Ms. Louise B. Wulff  
 Lynne Young  
 Mary Jo Young\*  
 Bonita Zaucha  
 Sharon Zenger  
 Eleanor M. Ziegler  
 Ms. Alice M. Ziittel

\* Deceased



## Bequests and Trusts

Sally E. Abbey Revocable Trust	Estate of James and Diann Fox	Karen J. Mahl Revocable Living Trust	Carol V. Rodgers Annuity
Estate of Brenda K. Almeida	Estate of Margaret Frey	Alma Clara Maler Living Trust	The Deborah A. Rollins Revocable Trust
John Amaya Charitable Revocable Trust	Estate of Ruth Galaid	Charles L. Mannillo Revocable Trust	Detrick Sadaa Estate and IRA
Estate of Joan M. Armstrong	Glenn Wayne Gaudet Estate	Estate of Mary Frances Manning	Margaret Sage Charitable Trust
Marilyn Ayres Estate and IRA	Estate of Pauline F. Gherson	Estate of Virginia Marggrander	Mary Sage Charitable Trust
Second Complete Restatement of The BJB Trust I dated April 19, 2012	E. Allen and Adelaide R. Ginkinger Memorial Trust	Gilda I. Mariani IRA	Fredricka P. Santos Annuity and Brokerage Accounts
Estate of Christa M. Barry	Anna Green and Frank Green Charitable Trust	Estate of Carol J. Mays	Elaine Schmidt Annuity
Betty Jane Bell Charitable Trust	Marie W. Greiner Trust	Paula J. McBurney Revocable Living Trust dated July 1, 2014	Joanne K. Schmidt Trust
Estate of William K. Blades	Estate of Mary K. Gutshall	Estate of Margaret F. McCormack	Schommer Revocable Trust
Estate of Richard G. Boguslaw	Estate of Fred Hafner, Jr.	The John S. McEvoy Living Trust	Estate and Trust of Samuel Scott
Estate of Penny Richardson Borda	Estate of Virginia Hale	Estate of Florence S. McLean	Jack O. Scroggins Charitable Foundation
G. Thomas Brooks Revocable Trust	Estate of Klaus Hanfft	Beverly Merritt Annuity	Estate of Marianne Seidenberger
Mary Brunot Annuities	Estate of Joyce Hannisch	Elynn Merritt Annuity	Estate of Bernice Selkow
Al and Bobbie Burgett	Suzanne Sherman Hatfield Fund	Survivor's Trust under the E.F. and R.M. Mertz Trust	Estate of Lois Bates Shey
Estate of Susan Anne Callahan	Estate of Jean N. Heller	Rachel P. Miller Revocable Trust	Estate of Kay Shipman
Alice M. Cann Revocable Trust	Illinois Prairie Community Foundation - Doris Henderson Donor Advised Fund	Estate of Janet Louise Minnerath	Estate of Lavona E. Slack
Diana J. Cardoza Revocable Living Trust	Estate of Julie Higi	Estate of Helen R. Moody	Roy S. Smith Charitable Trust
Estate of Robert Lee Caruthers	Joyce V. Hiller Revocable Living Trust	Estate of Janice M. Moore	Estate of Katherine M. Somers
Estate of Gloria M. Castillo	Betty L. Holloway Trust	Estate of Linda Crump Morris	Revocable Trust of Teresa A. Spreer
William Richard Jeffrey Cobb Trust	Estate of Eleanor Jane Hovey	Horace A. Moses Trust	Robert K. Stahlberger Revocable Trust
Darlene Cohen Revocable Trust	Charlene Hurt IRA	Ruth N. Moulton Charitable Trust	Grace C. Stebbins Trust
Dorothy D. Conkey Trust	Joselyn Jacobs Living Trust	Estate of David Moyer	David V. Sussman Revocable Trust
Coombs - Robbins Trust Fund	Estate of Gloria Gene Jeffrey	Estate of Joan Nedza	Dorothy J. Swanson Trust
Charles A. Cowen Life Insurance	Trust of Marion F. Johnson	Nelson Grantor Trust	Lucile Taylor Living Trust
Estate of Bettye Cruse	Ruth M. Jones Memorial Fund	Estate of Evelyn M. Nemes	Estate of Ann. M. Thompson
Francis C. Curtis Revocable Trust	Estate of Theresa L. Jones	Estate of William V. Nicklau	Clifford Patrick Thorne Revocable Trust
Mary Ann Curtis Revocable Trust	Estate of Sherwin A. Kane, Jr.	Estate of Emily Norton	Jeanette and Frank Titz Trust
Paul W. Dalton IRAs	Barbara Kelly Charitable Lead Trust	Estate of Ruth Joan O'Connor	Alice W. Tomlinson Administrative Trust
Ronald R. Davey Revocable Trust	Estate of Barbara J. Keyes	Adrian R. Olree Living Trust	Estate of Marilyn Tonseth
Estate of Barbara Davis	Estate of Elizabeth Kidd	Bernice S. Olson Trust	Thomas Tonseth III Disclaimer Trust
The Hannelore N. D'Elia Living Trust	The Joanne Kiefus Trust	Angeline M. O'Meara Trust	Catherine Tumbusch Charitable Remainder Unitrust
Estate of Helen Bates Dodge	The Charles R. Kilbourne Revocable Trust	M. Colyer Charitable Trust	Mariam Veatch Trust
Estate of Sonya Dunham	Estate of James Kimmons	The Imogene Kinder Owens Trust	Estate of Ralph J. Verdini
Edmund N. Duzik and Marilyn A.P. Duzik Trust	John Patrick King Annuities	Estate of Ouida H. Parham	The Jessica Walter Revocable Trust
W. Moreland and Ruth U. Ernst Charitable Trust	Helen Klimpl Administrative Trust	Maxine Patton IRA	Albert Walters Trust
Estate of Ella Jane Fahnestock	Nancy Ann Kollatz Irrevocable Trust	Joyce Peters-Alpi IRA	Grace D. Wellenberger Revocable Trust
The John Farrington Revocable Trust	Suzanne D. Kuehn Living Trust	Alexandra Plesha Revocable Trust	Estate of Winifred R. Williams
Estate of Mary Ann Feldman	William and Geraldine Kursinsky Trust	Estate of Martin Ploussard	Peter J. Wise Charitable Remainder Trust
Ferry Family Trust	Estate of Bernice B. Laita	Alcides C. Pomina Trust	Estate of Sonia Wolliak
Residuary Trust U/W Charles S. Fiske	Clara M. Laska Trust	The Myra Priskie Revocable Trust	Estate of Patricia Woolard-Wolff
	Carol Lehmann IRAs	Naomi K. Raber Nongrantor Charitable Lead Annuity Trust 1	Estate of Thornton Yancey
	Wayne and Hope Leizear Trust	The Theo Raven Revocable Trust	William Frederick Young
	Estate of Norma Lenhert	Peggy A. Redl Trust	Residual Trust
	Ella Lerner Revocable Trust	Olive Robinson Charitable Remainder Trust	
	William Lima Jr. Trust		
	Suzanne A. Livornese Revocable Trust		
	William Lomb Annuity		
	Estate of Robert Madich		



Members of Cornell Puppy Raisers + Verdi



## Planned Giving

### Make a Big Impact with a Future Gift

By including Guiding Eyes in your estate plans, you can help us continue our life-changing work while also meeting your personal and financial goals. Options range from a simple bequest to a gift that provides you with income for life, such as a gift annuity or trust. Guiding Eyes can assist you with sample language and other information to discuss with your financial advisor.

Our Pathfinder Society exists to recognize friends who have remembered us in their estate plans. Special benefits of Pathfinder Society membership include a commemorative certificate, a small gift of appreciation, and an opportunity to be “partnered” with a Guiding Eyes pup. That means you’ll receive photos and written updates on “your” pup’s progress. You’ll also be invited to special events and gatherings at Guiding Eyes or in your area. Visit [guidingeyes.mylegacygift.org](https://guidingeyes.mylegacygift.org) or contact Guiding Eyes to learn more.



# Financial Report for Fiscal Year 2022

GUIDING EYES FOR THE BLIND CONDENSED AUDITED FINANCIAL STATEMENTS

SEPTEMBER 30, 2022

## STATEMENT OF ACTIVITIES

	Without Donor	With Donor	
	Restrictions	Restrictions	Total
<b>Public Support:</b>			
Contributions	\$ 22,388,126	\$ 236,941	\$ 22,625,067
Planned giving	\$ 13,829,643	\$ 403,930	\$ 14,233,573
Other income	\$ 706,768	-	\$ 706,768
Net assets released from restrictions	\$ 1,501,393	\$ (1,501,393)	\$ -
<b>Total Public Support</b>	<b>\$ 38,425,930</b>	<b>\$ (860,522)</b>	<b>\$ 37,565,408</b>

### Expenses:

#### Program Services

Student Instruction & Dog Training	\$ 12,773,456	-	\$ 12,773,456
Client Experience	\$ 2,031,170	-	\$ 2,031,170
Veterinary Hospital	\$ 7,801,029	-	\$ 7,801,029
Canine Breeding	\$ 2,504,954	-	\$ 2,504,954
Facility & Food Service	\$ 2,153,857	-	\$ 2,153,857
Enrichment	\$ 1,651,614	-	\$ 1,651,614
<b>Total Program Services</b>	<b>\$ 28,916,080</b>	<b>-</b>	<b>\$ 28,916,080</b>

#### Supporting Services

Management & General	\$ 5,523,422	-	\$ 5,523,422
Fundraising	\$ 8,017,105	-	\$ 8,017,105
<b>Total Supporting Services</b>	<b>\$ 13,540,527</b>	<b>-</b>	<b>\$ 13,540,527</b>
<b>Total Expenses</b>	<b>\$ 42,456,607</b>	<b>-</b>	<b>\$ 42,456,607</b>

<b>Excess of Public Support Over Expenses</b>	<b>\$ (4,030,677)</b>	<b>\$ (860,522)</b>	<b>\$ (4,891,199)</b>
Investment income (net)	\$ (12,374,496)	\$ (1,649,826)	\$ (14,024,322)
Other net asset adjustments	\$ 10,189,000	-	\$ 10,189,000
Net assets, beginning of year	\$ 104,514,48	\$ 10,954,768	\$ 115,469,249
<b>Net Assets, End of Year</b>	<b>\$ 98,298,308</b>	<b>\$ 8,444,420</b>	<b>\$ 106,742,728</b>

## STATEMENT of FINANCIAL POSITION

	Without Donor	With Donor	
	Restrictions	Restrictions	Total
<b>Assets</b>			
Cash and cash equivalents	\$ 14,626,834	\$ 2,835,404	\$ 17,462,238
Receivables and prepaids	\$ 2,777,714	-	\$ 2,777,714
Investments	\$ 64,596,516	\$ 5,609,016	\$ 70,205,532
Other assets	\$ 431,301	-	\$ 431,301
Operating Lease Asset	\$ 142,196	-	\$ 142,196
Land, buildings and equipment, net	\$ 20,473,955	-	\$ 20,473,955
<b>Total Assets</b>	<b>\$ 103,048,516</b>	<b>\$ 8,444,420</b>	<b>\$ 111,492,936</b>

### Liabilities & Net Assets

Accounts payable & accrued expenses	\$ 1,611,619	-	\$ 1,611,619
Gift annuity and other reserves	\$ 1,880,053	-	\$ 1,880,053
Bonds payable	\$ 832,039	-	\$ 832,039
Deferred 457B	\$ 284,301	-	\$ 284,301
Operating Lease Liability	\$ 142,196	-	\$ 142,196
Net assets	\$ 98,298,308	\$ 8,444,420	\$ 106,742,728
<b>Total Liabilities and Net Assets</b>	<b>\$ 103,048,516</b>	<b>\$ 8,444,420</b>	<b>\$ 111,492,936</b>

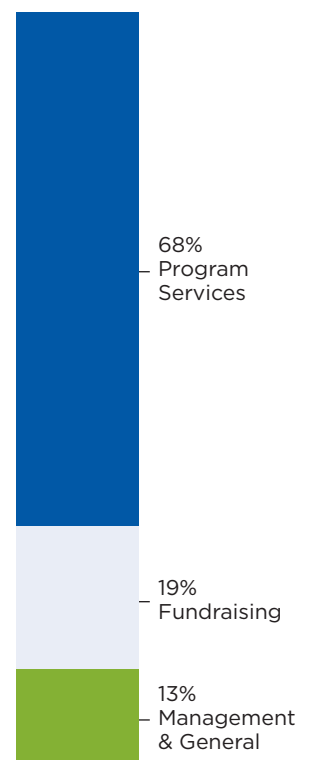
Our website, which contains the electronic financial statements, will advise the reader that such financial statements are presented for convenience and informational purposes only, and while reasonable efforts have been made to ensure the integrity of such information, they should not be relied on. A copy of the printed fiscal year 2022 audited financial statements will be provided upon request.

The above condensed financials have been taken from the fiscal year 2022 financial audit performed by BDO, USA LLP.

## FY22 PUBLIC SUPPORT



## FY22 FUNCTIONAL EXPENSES



# Our Leaders

## Board of Directors

John L. Donnelly, *Board Chair*  
Curt J. Landtroop, *Vice Chair*  
Matthew E. Zames, *Treasurer*  
Jane Adams, *Secretary*

Eduardo Andrade  
Patricia David  
Wendy S. David  
David Fein  
Holly Hess Groos

Sue Kelsey  
Eli Manning  
Jane C. Parker  
Andrea Redmond  
Cory Shields

Thomas McC. Souther  
Cynthia Sullivan  
Dr. Gaurang Trivedi

## Senior Management Team

Thomas A. Panek,  
*President & Chief Executive Officer*  
Beth Brenninkmeyer, DVM,  
*Chief Veterinary Officer*  
Gerald Brenninkmeyer,  
*Director of Canine Program Development*  
Ben Cawley,  
*Director of Client Experience*  
Elena Consalvo,  
*Chief Development Officer*

William Ma,  
*Head of Technology & Operations*  
Laura Peterman,  
*Chief of Staff*  
Janine Petroro,  
*Head of Human Resources*  
Danielle Roth,  
*Chief Financial Officer*



Front row, left to right: Curt J. Landtroop, with guide dog Quincy, Danielle Roth, Thomas A. Panek, with guide dog Blaze, Jane C. Parker, Patricia David, Cory Shields. Back row, left to right: Gerald Brenninkmeyer, Laura Peterman, Eduardo Andrade, Elena Consalvo, Dr. Gaurang Trivedi, John L. Donnelly, Ben Cawley, Janine Petroro, William Ma, Dr. Beth Brenninkmeyer, Thomas McC. Souther. Not pictured: Jane Adams, Wendy S. David, David Fein, Holly Hess Groos, Sue Kelsey, Eli Manning, Andrea Redmond, Cynthia Sullivan, Matthew E. Zames.





**Guiding  
Eyes**  
for the Blind

611 Granite Springs Road,  
Yorktown Heights, New York 10598  
800-942-0149  
[guidingeyes.org](http://guidingeyes.org)



**Puppy Raiser  
Adithya + Miles**

Miles was Special Named in honor of Miles Weinreb by Margie and Larry Weinreb. Learn more about Special Naming on Page 18.



Guiding Eyes for the Blind is a leading nonprofit guide dog school with 501(c)(3) status.