



**Guiding  
Eyes**  
for the Blind

**2023**  
ANNUAL REPORT



**John with future guide dog pup JP and Thomas with guide dog Ten.**

These pups were special named in honor of corporate partner JPMorgan Chase, and Board Member and supporter Eli Manning. Learn more about special naming opportunities on page 25.

**Dear Friends,**

**At Guiding Eyes for the Blind, demand for our exceptional guide dogs is increasing. We are working hard to grow in order to meet this need.** Some of the exciting plans we enacted in Fiscal Year 2023 make a difference immediately, and some take time to develop – like our new kennel facility expansion. Throughout our 70-year history, one important thing remains the same: our dedication to connecting exceptional guide dogs with individuals for greater independence.

In these ever-changing times, our talented and enthusiastic staff, volunteers and donors are working together to service more people who are blind or have vision loss without compromising what we do best: **breeding, raising, training, and pairing our world-class dogs with people who need them most.**

In this Annual Report, you'll learn how Guiding Eyes brought commitment and innovation to our tasks. With your help, we succeeded in pairing more of our beautiful dogs as life-changing gifts with individuals who are blind or have vision loss.

Our current kennel is almost 60 years old and operates at nearly maximum capacity, so **we are currently developing an expansion to accommodate even more guide dogs in training.** This two-story, 30,000-square-foot Wellness & Training Center, scheduled to open in 2026, will eventually house up to 220 guide dogs in training in a state-of-the-art space designed to promote optimal canine health and wellness.

**While we grow, and as demand increases, we continue to focus on providing a full range of programs and services.** We redesigned our campus dorm rooms, bringing additional comfort and safety to our On-Campus Training students. We refined the important connection between training teams and placement teams, to ensure the perfect match. Our classes became smaller yet more frequent, enabling us to provide more customized training and meet the scheduling needs of our handlers. And we increased the pace of graduations from monthly to every two weeks, so that we can continue to **build the strong sense of community that defines us.**

**As a leading guide dog school both nationally and internationally, it is our responsibility to set new standards as we grow.** This has been our mission since 1954: connecting exceptional dogs with individuals for greater independence. We succeed thanks to the dedication of our vast family of donors, volunteers, and puppy raisers. We fund 100% of what we do without any money from the government, and continue to provide our dogs and training at no cost to our students. We are very thankful for your support.

We're always learning together. Guiding Eyes continually strives to grow and evolve, and collaboration makes us successful. **Every person's role in a guide dog's journey – every hand that touches the leash – supports the next phase of that journey.** As a community, we all work towards our ultimate goal: independence, confidence, companionship and freedom for people with vision loss.

Thank you for coming on this walk with us.

Sincerely,



John L. Donnelly, Board Chair



Thomas A. Panek, President & CEO

# OUR MISSION

Guiding Eyes for the Blind provides guide dogs to people with vision loss. We are passionate about connecting exceptional dogs with individuals for greater independence.

We believe in the powerful, meaningful change that our beautiful dogs bring to the lives of people facing the daily challenges that blindness and vision loss present.



We work out of our Headquarters and Training School in Yorktown Heights, New York; our Canine Development Center in Patterson, New York; and our Urban Training Center in White Plains, New York.

Our Puppy Raisers are located along the Eastern Seaboard, stretching from Maine to North Carolina, and west to Ohio and Colorado. Regional Guide Dog Mobility Instructors are located throughout the United States.



Guiding Eyes is an accredited member of the International Guide Dog Federation (IGDF), the organization that establishes worldwide standards for the breeding and training of guide dogs.

## Table of Contents

By the Numbers	4
2023 Highlights	6
Our Programs	8
Our Supporters	14
Financial Report	28
Our Leaders	29

## On the Cover

First-time guide dog user Melchion and his Running Guide, Larson, at the United States Supreme Court in Washington, DC. Hear from Melchion and other Fiscal Year 2023 graduates in our Graduate Spotlights on pages 14-21.





**Nearly 500 pups  
are born annually.**

Approximately 90 percent are  
Labrador Retrievers, and 10  
percent are German Shepherds.



**Guiding  
Eyes**  
for the Blind

# BY THE NUMBERS

## 70+

### YEARS OF EXPERIENCE

Guiding Eyes has 70+ years of experience in providing guide dogs to people with vision loss.

## 10,000+

### SERVICE DOG TEAMS

We estimate that more than 10,000 service dog teams have graduated since our founding in 1954.



## 1,700+

### COMPASSIONATE VOLUNTEERS

More than 1,700 compassionate and dedicated volunteers are an essential part of the Guiding Eyes community.

## \$50,000

### FOR TRAINING & CARE OF ONE DOG

It can cost up to \$50,000 annually to train and care for a guide dog throughout its working lifetime with a person who is blind.

As a 501(c)(3) nonprofit organization, Guiding Eyes provides all services completely free of charge. Our support comes almost entirely from generous individuals and philanthropic organizations. We do not rely on government funding.

# OUR IMPACT — FISCAL YEAR 2023\*

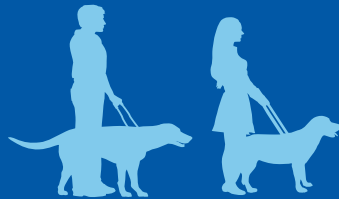
**Approximately 900 Guiding Eyes dogs actively worked as service animals for people with vision loss over the past year.**



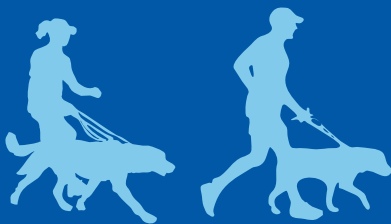
**461 puppies were born:**  
424 Labrador Retrievers and  
37 German Shepherds.

**325 puppies were selected** to be placed in homes with puppy raiser families.

**271 dogs entered guide dog training,** including 251 Labrador Retrievers and 20 German Shepherds.



**150 dogs graduated from guide dog training and were paired with people with vision loss,** including 145 Labrador Retrievers and five German Shepherds.  
61 dogs went on to careers in law enforcement or other service organizations.



**Of our 150 graduate teams, 24 teams were Running Guides, and 17 of the teams received Specialized Training.**

47% of graduates were new to our school, and 87% of those graduates, new to our school, have never had a guide dog before. 53% of graduates returned to Guiding Eyes for successor dogs.



\* Training cycles may straddle two fiscal years.

# 2023 HIGHLIGHTS



1. Guiding Eyes rang the opening bell at NASDAQ in New York City.
2. Board Member Eli Manning hosted the 46th Annual Guiding Eyes for the Blind Golf Classic.
3. Supporters and their dogs raised more than \$100,000 in our WAGATHON.
4. Corporate partner Mastercard held a Volunteer Day on campus.





- 5. Corporate partner JPMorgan Chase & Co. held a Volunteer Day on campus.
- 6. Raisers and pups visited the American Kennel Club Museum of the Dog in New York City.
- 7. As part of National Volunteer Week, Guiding Eyes hosted a Raiser Celebration Day.
- 8. Guiding Eyes appeared on FOX5 New York as part of Giving Tuesday.
- 9. The 38th Annual Lake Waramaug Polar Bear Run raised over \$7,000 for Guiding Eyes.



# OUR PROGRAMS

## Genetics & Breeding

As a global leader in genetics and breeding, Guiding Eyes employs industry best practices in our approach towards continually improving the health and temperament of our dogs. Our data-driven approach, together with our partnerships with other guide dog organizations, specialists, and universities, helps to promote genetic diversity and ensure that each generation of dogs is improving over time.

Our purposefully bred puppies are born at the Canine Development Center in Patterson, New York, where they are lovingly nurtured and socialized prior to entering their puppy raiser's home.

## Socialization

Guiding Eyes runs an extensive pre-training program geared at developing each pup's desire to connect with people, giving them a head start in understanding how to work with people in a positive, fun relationship.

From birth to 12 weeks, we acclimate our pups to the sights, sounds, social interactions, and early training that will maximize their potential to be a guide dog. Volunteers in our Early Socialization Program come in daily to massage our puppies from the time they are one week old, which begins building the vital relationship between the puppies and their human companions.

Volunteer Home Socializers build on early kennel socialization experiences by helping the puppies in a positive and supportive manner to become accustomed to a home environment and encouraging them to explore the sights and sounds of a busy household.

## Hockmeyer Puppy Pavilion

At age 6-9 weeks, our puppies transition to spacious kennels adjacent to the Hockmeyer Puppy Pavilion.

In this fun, stimulating, toy-filled indoor and outdoor environment, pups continue to build upon the progressive lessons taught by staff and volunteers such as self-control when getting fed or picked up, settling during crate-time, and how to problem-solve and develop skills such as climbing stairs and mastering underfootings.

“ I look at these puppies and they have been bred and raised for the work of helping others navigate life, and I think helping to fulfill that destiny is worth doing. ”

— Frances,  
Puppy Raiser

# Journey of a Guiding Eyes for the Blind Guide Dog



## ▶ BIRTH

Puppies are born at the Canine Development Center in Patterson, New York.

## ▶ BIRTH TO 8 WEEKS

Puppies receive early training and socialization.

## ▶ 8 WEEKS TO 16 MONTHS

Puppies learn key skills from volunteer puppy raisers.

## ▶ 16 MONTHS TO 22 MONTHS

Dogs join Guide Dog Mobility Instructors in Yorktown Heights, New York to learn guide work.

## ▶ 22 MONTHS TO 8-10 YEARS

Dogs are matched with people who are blind, living with them as working guide dogs.

## ▶ 8-10 YEARS +

Dogs retire from service, living with their handler or an approved adopter.



## Puppy Raising

Puppies selected as potential future Guiding Eyes guide dogs are placed in volunteer homes for 12 to 18 months.

These essential volunteers raise a Guiding Eyes puppy by providing the pup with the love, socialization, house manners, and basic obedience they will need to succeed in guide dog training. The pup's journey later continues at our Headquarters & Training Center in Yorktown Heights, New York, as they realize their full potential and train to become a world-class Guiding Eyes guide dog.

## Brood & Stud Fostering

Guiding Eyes Breeding Dogs ensure the future of all our programs. They are vital to our work, and the people who provide them with homes are crucial members of the Guiding Eyes community.

Brood/Stud fosters and sitters take on the responsibility of the health, well-being, and happiness of our breeding dogs. Our foster/sitter volunteers are also our diplomats, showing off our wonderful dogs to their communities each time they leave home.



## Kennel Enrichment

Guiding Eyes' extensive kennel enrichment program helps ensure that our dogs have a positive, enjoyable stay with us. We evoke our dogs' interest by exposing them to a variety of new stimuli, including community playtime together, movement, natural and artificial objects, different textures and surfaces, and puzzles and food toys.

## CARING FOR OUR GUIDE DOGS

At Guiding Eyes, we are dedicated to providing excellence in veterinary care. We operate two state-of-the-art veterinary hospitals through our main campus in Yorktown Heights, New York and our Canine Development Center in Patterson, New York.

Our veterinarians, licensed veterinary technicians, and administrative staff care for dogs in the Breeding, Puppy, and Training Programs. Our vet care extends to all working Guiding Eyes dogs through remote communication and referrals, and using our own facilities when proximity allows.

Our veterinary team performs routine surgical and dental procedures, X-rays, sonograms, endoscopy, laboratory work, vaccinations, and an array of wellness services. We also work with specialists in ophthalmology, cardiology, neurology, orthopedics, and radiology, many of whom donate services to help provide our dogs with the best care possible.



“ How amazing that we can take all the joy these dogs bring to us and then share it with someone for whom it can be life-changing! ”

— Mary,  
Region Coordinator &  
Puppy Raiser



Our nurturing staff and volunteers provide a healthy combination of exercise and rest to stimulate our dogs' minds, enhance their lives and prevent stress during this important training period.

### Training Our Guide Dogs

Dogs sent to guide dog training learn the concepts of guiding in small steps, and build upon previous lessons with many repetitions in a great variety of environments.

Dogs in training are assigned to a Guide Dog Mobility Instructor (GDMI), who will develop a relationship with the dog through play, obedience, work, and time together. Our instructors will work with each dog for a minimum of five months.

A guide dog is ready for placement with a partner when the dog responds reliably and safely to all work situations they will encounter while guiding, such as indicating a curb at street crossings, detecting and avoiding obstacles, and navigating all types of public transportation. We carefully match each guide dog with a person based on pace, pull, personality and the person's preferences.

### Career-Change Dogs

Each Guiding Eyes dog demonstrates their potential career path. Only dogs showing the self-confidence and composure necessary for guide work are assigned to undergo guide dog training and placement with a person who is blind or has vision loss.



**“ I’m so honored to see the relationships that are formed, not only between dogs and humans, but among classmates and instructors. It really is a community — these are connections that last a lifetime. ”**

**— Melissa,  
Community  
Outreach &  
Graduate Support  
Manager**

Dogs who are not selected for guide dog work often go on to other important careers as working dogs. For example, a dog with a little too much energy to settle may enjoy an active career using their nose in law enforcement. Others may become service dogs in partner organizations.

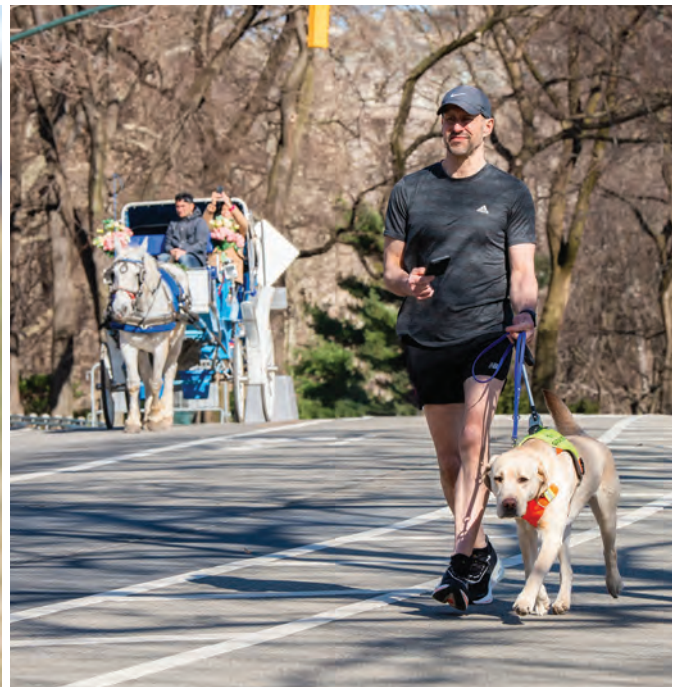
Dogs who aren’t well-suited to guide work or other careers are placed in loving homes through public adoption.

## **Student Training Programs**

Guiding Eyes is not one-size-fits-all; we know that every guide dog is different from the next. We celebrate every match we make between a person and their guide dog — and support that partnership throughout their lives together.

We offer flexible options for someone interested in receiving a guide dog, including On-Campus Training at our headquarters in Yorktown Heights, New York and Home Training for those unable to travel. We also offer Specialized Training for people who have additional needs such as gait and balance issues, cognitive challenges, and hearing loss. And, our Running Guides program trains teams at a faster pace for enhanced physical fitness.

To further meet our students’ needs, training can be adjusted to accommodate work schedules, family life and more. Our instructors continue to refine their training during each program to meet each student’s needs — to ensure success.





## CARING FOR OUR STUDENTS

As part of our personal approach, our nursing staff serves both Home Training and On-Campus Training students from the beginning of the application process. Our nurses communicate with students and their at-home practitioners in order to keep them connected, comfortable and safe during our program. While On-Campus Training is in session, nurses are on duty 24 hours a day, to assist with routine medical needs and administer first aid as needed.

Our on-campus dining program includes meals at Rosie's Café, which are custom prepared with care to nourish our students while accommodating most dietary needs. The culinary experience is often named as a highlight of students' Guiding Eyes experience.

Our beautiful Yorktown Heights campus is fully accessible, and we coordinate a wide range of activities to help students make the most of personal time.

## Graduation

Graduation ceremonies are the culmination of training for our guide dog teams. Happening every two weeks, these joyful events are an opportunity for puppy raisers to connect with their dogs' new handlers and for our volunteers, donors, and supporters to share in the celebration.

Everyone is welcome to attend graduations in person or participate via livestream, and past ceremonies are viewable on our website anytime. Visit [www.guidingeyes.org/graduation](http://www.guidingeyes.org/graduation) for details.

## Retirement

The age of retirement from guide work varies considerably for each dog and is dependent upon factors related to the dog's health, age, and situation. The graduate has first option of adopting the retired guide dog or selecting an approved adopter who is a close friend or family member.

If the graduate cannot adopt, the dog is either returned to the care of their puppy raiser or placed in another wonderful home through public adoption.



## GRADUATE TEAM SPOTLIGHT

### Ronnie + Flower

“ Having Flower encourages me to go outside and travel more. She provides me with so much more confidence... I am much more motivated. ”



# OUR SUPPORTERS

We are grateful to our donors who generously supported our mission during the 2023 fiscal year, October 1, 2022 to September 30, 2023. Your gifts make it all possible!

## CATEGORIES

**Donors \$100,000 and Up**

**Donors \$50,000 to \$99,999**

**Donors \$25,000 to \$49,999**

**Donors \$10,000 to \$24,999**

**Donors \$5,000 to \$9,999**

**Donors \$2,500 to \$4,999**

**Donors \$1,000 to \$2,499**

**Lions Clubs**

**Matching Gift and Employee Giving Programs**

**In-kind Gifts**

**Ways to Give**

**Pathfinders**

**Bequests & Trusts**

**Planned Giving**

### **\$100,000 and Up**

Nancy and John Donnelly  
Suttle Charitable Trust  
The Wohlers Family Foundation

### **\$50,000 to \$99,999**

Bannerot-Lappe Foundation  
John Barfield  
Loreen Beisswenger Farish  
Charitable Foundation  
Gilberte Breslin  
Mary Didot  
The Community Foundation for  
Greater New Haven  
Glenn Greenberg and Linda Vester  
Foundation  
Carol Hendrix  
Wayne Hockmeyer  
Eli Manning  
James L. Mathas Foundation  
NM Morris Family Foundation, Inc.  
Doctor Domenic A. Vavala Charitable  
Fund of the Rhode Island Foundation  
Leslie Strupp  
Cynthia Vanneck  
The George T. Walker Charitable Fund  
of the Lehigh Valley

### **\$25,000 to \$49,999**

Craig Ackermann  
Christine McKendry and  
Eduardo Andrade  
The Sandra Atlas Bass and  
Edythe and Sol G. Atlas Fund, Inc.  
Katherine Bishop  
Samual M. and Alma Catsman  
Foundation  
Cerberus Capital Management, L.P.  
William Davison  
The Flatley Foundation  
Charles A. Frueauff Foundation, Inc.  
Joseph and Paulette Gootter  
Maris Groger  
Mary P. Dolciani Halloran Foundation  
William G. and Helen C. Hoffman  
Foundation

Janet Humphreys  
IBM Corporation  
Kinloch Consulting Group, Inc.  
Kimberly Krizanovic  
Jeanne Maraz  
The Melik-Baschkopf Foundation  
Carol Mercer  
Phyllis Milton  
The Portmann Family Charitable Fund  
Reader's Digest Partners  
for Sight Foundation  
The Resource Foundation  
Allene Reuss Memorial Trust  
David W. and Judith H. Sohl  
Hugh Taylor  
Janina Voss  
The Lance R. Wachenheim Foundation  
Michael and Barbara Walters  
Ronald J. Woods Charitable Trust  
Evaleen Ziemba

### **\$10,000 to \$24,999**

Louis and Anne Abrons  
Foundation, Inc.  
H.A. & J.W. Alburger Charitable Trust  
Kevin Alger  
Kim Allen and Alex Cohen  
Warren Azzara  
Mr. and Mrs. Scott Belair  
Keith and Corinne Bentley  
Boerger Foundation  
Cheryl and Gary Bosak  
Boston Center for Blind Children  
Amy Bourque and Tony Correia  
Irene Boylan  
Michael and Joan Burke  
Camiener Foundation  
Deborah Camp  
Julianna Carner  
The Thomas and Agnes Carvel  
Foundation  
Ellen and Nirmal Chatterjee  
The Chicago Community Trust  
Jay Coffman  
Elinor Cohen  
Marian J. Cole



Bruce and Leigh Cone  
 C.S. Craig Family Foundation  
 Joseph and Paula D'Agostin  
 Elsie H. Del Fierro Trust  
 John and Lynn Dillon  
 Russell Disbro  
 Howard A. Drescher  
 Foundation  
 Harriett and Bob Druskin  
 Tim Dunn  
 Davis Elkins Foundation  
 Lillian Feder Foundation  
 Valerie Fichera  
 Delbert French, II\*  
 Mark Glasser  
 The Goodnow Fund  
 Carolyn Goodrich  
 Robin L. Gordon  
 June Haines  
 Marianne Halle  
 Taylor Hanex  
 The Helen G. Hauben  
 Foundation  
 Sue Hayes  
 Healthy Vision Association  
 Mr. and Mrs. Robert Hyde  
 The Kresse Family  
 Cynthia and Danny Jost  
 JPMorgan Chase & Co.  
 The Katzenberger  
 Foundation, Inc.  
 Kimberly-Clark Foundation  
 Charles & Lucille King  
 Family Foundation  
 James T. Lee Foundation  
 Pamela Kuhn Lent and  
 John Lent  
 Josephine Luicci  
 Gail and Al Maiolo  
 Mr. Mordy Mandell  
 Eric Margolis  
 Dondrea and Danny Marshall  
 A B Massey Charitable  
 Gift Fund  
 Joy Matson  
 Susan K. McDaniel  
 Christine Mele  
 Megan Meuse  
 Mey Share Foundation Inc.  
 Sandra Mingesz  
 Robert Niehaus  
 Laura J. Niles Foundation, Inc.  
 North Yonkers  
 Community Fund  
 Cheryl and Michael O'Connor  
 The Odd Fellow and Rebekah  
 Benefit Fund  
 Arthur J. & Esther A. Ohlsson  
 Charitable Trust  
 Susan Oldfield  
 Diane Oltmann  
 Oppenheim Family Fund  
 Bobbie Oxley  
 George and Barbara Paletta  
 Charitable Fund  
 Pender Pet Caring  
 Foundation  
 Linda M. Phillips  
 James Polis  
 Dorothy Prouty  
 Andrea Redmond  
 Andrea Robbins

Rohauer Collection  
 Foundation, Inc.  
 Laurie and Marc Rovner  
 Doris R. Satterwhite  
 Daniel Savoie  
 Arlene Schafer  
 Scharpf Family Foundation  
 James Warren Searcy  
 Charitable Trust  
 The Sexton Family  
 Foundation  
 John and Gabrielle Shamsey  
 Cormac Shields  
 Terry Shober  
 Ruth Sidorowicz  
 Ruth Single  
 LE and Jan B Jones Family  
 Fund of the South Carolina  
 Christian Foundation  
 Kate Speer  
 Gary and Paget Stanco  
 Neil and Susan Stockel  
 Martha Washington Straus  
 and Harry H. Strauss  
 Foundation, Inc.  
 Cynthia Sullivan and  
 Robert Rollmann  
 Jeanne Swartchild  
 Tanner Industries, Inc.  
 Marilyn Taylor  
 Amelia and Gary Taylor  
 Clare Teixeira  
 Anne Travalia  
 Turner Construction Company  
 Jerry Umberger  
 Judith Walker  
 Judith Weinberg  
 Weiss Family Foundation  
 Sarah and John Wildemore  
 The Winston Foundation, Inc.  
 Linda Young  
 Jill and Matthew Zames

**\$5,000 to \$9,999**

Jane Adams  
 Carol Adragna  
 Aero Hardware and Parts Co.  
 The Alexander S. Alacche  
 Foundation  
 Marcia Almasy  
 James L. Amendola  
 Foundation Fund of the  
 American Endowment  
 Foundation  
 Keith Anderson  
 Fredrica and Ray Applebaum  
 Linda Atteberry  
 Marianne Baker  
 Barbara Waldfogel, Sydney  
 Berg, and Zoe Berg  
 Cathy Bernard  
 Debra Bernstein  
 Frank and Tracy Bisignano  
 Susan Bogin  
 Mr. and Mrs. Douglas  
 Boustead  
 Terence Brady  
 William J. Brand  
 Alice Bratton Clark  
 Paige Levine-Brennan and  
 James Brennan  
 Brethren In Christ Foundation

Charles & Lois Marie Bright  
 Foundation  
 Sandra Brock  
 Brown and Brown of  
 New York, Inc.  
 BTIG, LLC  
 Cliff Burrows  
 Karyn Caliri  
 Marilyn Chan  
 Louise Christopherson  
 Clara Jeffery Charitable Trust  
 C&K Clark Family Foundation  
 The Ilene Clow Foundation  
 Constance M. Cooper  
 Charitable Foundation  
 Crane Charitable Funds  
 D'Agostino Foundation  
 William E. Dean III  
 Charitable Foundation  
 Delta Gamma Foundation  
 Susan Di Gerolamo  
 Shirley Donnelly  
 Doolittle Family  
 Foundation, Inc.  
 Queta Dregely  
 Betty Dunne  
 Eigen X, LLC  
 Joyce M. Englund Charitable  
 Foundation  
 Noel Foreman Foundation  
 Doris Fowler  
 Janet Frankovsky  
 Carlo and Kim Frappolli  
 Pamela Goldstein  
 Paula Goldstein  
 Palma Goodman  
 Michele and Marty Greenberg  
 Karen Greene  
 David Groves and  
 Sheila Vannoy  
 Karen Hahn  
 The John and Susan Hammel  
 Family Foundation  
 Leean Hanley  
 Harris Mathews  
 Charitable Foundation  
 Jane Haugan  
 Jayne Haynes  
 The Lundy Fetterman Family  
 Foundation Trust  
 Hieronymus Family Fund, Inc.  
 Marshall Hilsberg  
 Eric and Deb Hirschfield  
 Hoag Family  
 Charitable Foundation  
 Paul Holland  
 John W. and Theresa Holly  
 Donald and Jennifer  
 Holmgren  
 Richard and Rachel Honquest  
 The Howard Johnson  
 Foundation  
 Rosemary Hughes  
 Holly Ingham  
 Iveric Bio, Inc.  
 Marie Jacobs  
 Anne Jones  
 Karen's Produce & Ice Cream  
 Robert Kayser  
 Lucy Keefe  
 Judith Kickert  
 Christine Klein  
 Christopher Krako

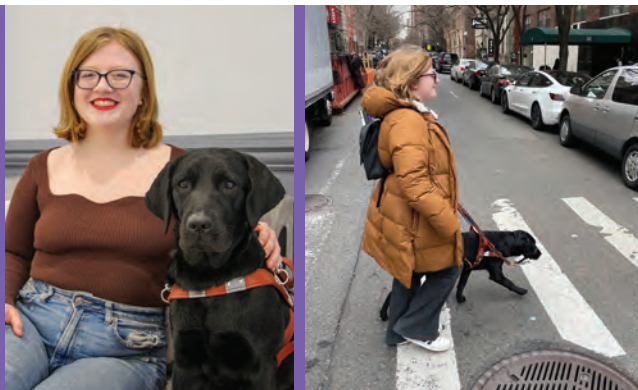
Regina Lancaster  
 Warren and Barbara Larson  
 Marilyn Lauesen  
 Laugh for Sight  
 Joseph and Tamra Lhota  
 Liberty Bank  
 Bei and Feng Ling  
 Josh Liptzin  
 Georgia Lucas Barnett  
 Jil Maheu  
 Mary Ann Mahoney  
 Ralph G. and Wilma J.  
 Maibaum Foundation  
 Pamela Malinchak  
 Gerald Marinoff  
 Caroline Marr  
 Kathleen McCarthy  
 Jerry and Bernadette  
 McCarty  
 H. McEver  
 John McGraw  
 Holly McManus  
 Patricia Meyer  
 John Meyer  
 Victoria Milam  
 Daniel Milgrom  
 James Mindling  
 Ruth Mitchell  
 Jeanne Carol Myers  
 Mr. Richard W. Niemiec and  
 Mrs. Ruth C. Niemiec  
 Sidney Nisbet  
 Curtis & O'Hara Foundation  
 Bob Oldham  
 Mr. John Trumble and  
 Mrs. Mary O'Malley Trumble  
 M. Linda Parker  
 Janice and Nicholas Pepe  
 Margaret Petrocelli  
 Merna and Steven Pickett  
 Marie Poos  
 Charles Lamont Post  
 Charitable Trust  
 Melissa Powell  
 Priolo Family Foundation  
 The Raffiani Family  
 Foundation  
 Randall Family Fund  
 William Ransom  
 Dr. Cheryl L. Raymond  
 Raymond Family Foundation  
 Michael and Patty Reed  
 Marcia Regan  
 Louise Reichl  
 Fran Reis  
 Helen E. and Stanley H.  
 Grossman Fund of the  
 Rhode Island Community  
 Foundation  
 Ridgefield Thrift Shop  
 Helen Root  
 The Benjamin M. Rosen  
 Family Foundation  
 Victor and Suzanne  
 Rosenzweig  
 Carl & Verna Schmidt  
 Foundation  
 Schuler Family Foundation  
 Linda Seaman  
 The Seattle Foundation  
 Seventh District Foundation  
 Thomas Sileo  
 Nicholas Skinner

The Sloman Foundation  
 Mr. and Mrs. Robert and  
 Barbara Smith  
 Zohreh Sotoodeh  
 Catherine and Thomas  
 McC. Souther  
 Andrew Stackel  
 Martha Steele and Robert  
 Stymeist  
 Howard Stern  
 Thomas and Polly Stilp  
 Mickie Stokes  
 Richard and Gladys Sullivan  
 Mark and Julie Svoboda  
 Margaretta Taylor  
 Milton Tenenbaum  
 Charitable Foundation  
 David L. Thorp  
 Trailheads  
 Mary Ann Trapp  
 Helen Van Syckle  
 Janice Vogt  
 Rosemary Walztoni  
 Sandra Waterfield  
 Missy Weidhorn  
 Nina W. Werblow  
 Charitable Trust  
 Carlisle Wildeman  
 Jolanda Willems and  
 Marc Mandigers  
 Roger Williams  
 Pamela Wilson

Catherine Woods  
 Louise and Kurt Wulff  
 Daniel Wurm  
**\$2,500 to \$4,999**  
 Andrew Adamczyk  
 Cheryl Alford  
 Sylvia Almendinger  
 The Annabelle Foundation  
 Artemis Anninos  
 Brenda Anthony  
 Annetta Atchison  
 Alben F. and Clara G. Bates  
 Foundation  
 Audrey Bickenbach  
 Lynn Birdsong  
 The John N. Blackman, Sr.  
 Foundation  
 Ed and Laura Blatchford  
 Broughton Foundation  
 Harold Brunssen  
 Carol Burkholder  
 Nadine Cancell  
 Paul & Pearl Caslow  
 Foundation  
 Albert Clark  
 Darren and Curbie Cohen  
 Columbia Forest Products  
 Shirley Conrad  
 Theodora Corroon  
 Joan Crowell  
 Custodio & Dubey LLP  
 Custom Ink LLC

Dana Ford Lincoln  
 Data Axle  
 Barry and Caroline Davis  
 Family Foundation  
 Laura De Reitzes  
 Edward Debartolo  
 Michael D'Elia  
 The DeMarco Family  
 Gerald Devaney  
 Kat and Jason Di Piazza  
 Gretchen Docter  
 Dorothy Dodson  
 Alvin Doehring  
 Mary Ann Dudko  
 The Robert and Gail Edelstein  
 Foundation  
 Susan Ellis  
 Enterprise Holdings  
 Foundation  
 Bob and Ruth Escher  
 Edgar Field  
 Dr. and Mrs. Neil Fine  
 Amy Finzi  
 Jennifer Firestone  
 George Gatto  
 Ghiselin Foundation at Kitsap  
 Community Foundation  
 Joseph Giglio  
 Stanley Ginsberg  
 W. Kearney Glenn  
 George Ann Griffin  
 The Gumbo Foundation  
 Fannie Gupta  
 Vahan Gureghian  
 James Hansen  
 Lawrence Hanson  
 Mable Harrington  
 Mark Hayter  
 Martha Heavrin  
 Michael Herman  
 William Herzberger  
 Mary and Philip Hogan  
 Joyce Horan  
 Michael Hronec  
 Susan Hufford  
 Mary Hunkeler  
 Virginia Jacko  
 Alison James and  
 Jim Reesman  
 Blanche Maria Johnson  
 Darla Jones  
 Fannie and Stephen Kahn  
 Charitable Foundation  
 Linda Kane  
 Darlene and Jim Keelor  
 Janell Keith  
 Barbara Kelly  
 Margaret Kelly  
 Edward and Brigid Kenney  
 Leona Kern  
 Curt and Susan Koster  
 Ronald Kuenkler  
 Lynn Lamar  
 Land Tek Group, Inc.  
 Thomas and Nikki Lasala  
 Linda Leiseca  
 Dolores Leite  
 Betty Levinson  
 Michael J. and Patricia  
 Levitt Family Charitable  
 Foundation  
 Laura Lichtenstein  
 Jorge Limon

John Lochey  
 Cristy Lockwood  
 Richard Lovett  
 Angelo Luppino  
 William Magruder  
 Warren and Renee Marcus  
 Carol Marker  
 Carol Mascioli  
 Debby Massa  
 Lilo Masters Fund  
 Susan Matheson and  
 Jerome Pollitt  
 Robert Mattson  
 Bernadette McCarty  
 Ramsey McGrory  
 David and Susan McMunn  
 R. K. Mellon Family  
 Foundation  
 Linn Meyer  
 Kathryn Meyers  
 Jennifer Miller  
 The Anne R. Monroe  
 Foundation  
 Elizabeth P. Muller  
 Charitable Trust  
 Jack Murphy  
 Howie and Judy Naugle  
 Lynn and Robert Newman  
 Jeffrey Niemann  
 Robert Oates  
 Stacy Oberman  
 Brett and Jessica O'Brien  
 Daniel and Mary Oonk  
 Jane Osler Kyle  
 Cinnie Parkins  
 Moses L. Parshelsky  
 Foundation  
 Craig Patterson  
 Deborah Pazourek  
 E. Peebles  
 Ken Pepper  
 David and Lynne Petronella  
 Pro Justicia Sucesora, LLC  
 Gail Quinn  
 Takako Asakawa Richards  
 Gerald and Diane Roba  
 Bruce Roberts  
 Quentin Roberts  
 Leo and Christine Rocca  
 Mary Rojas  
 Ann Rosche  
 Babette Rubin  
 Jeanne Ryan  
 Floyd W. Safford  
 Linda and Andrew Safran  
 Joseph Salgado  
 Kathy Sanchez  
 Leslie Sarf  
 Carol Saunders  
 Sebastian Schroder  
 Deborah Sentochnik  
 Suzanne Seta  
 Walter and Sally Shipley  
 The Harvey and Elizabeth  
 Prior Shriber Charitable  
 Foundation  
 David Siddons  
 Marjorie Smith  
 Alice and Joseph Smith  
 Gordon S. and Wilma V. Smith  
 Family Endowment  
 Lena Sorrentino  
 Daniel E. Sparks



**GRADUATE TEAM SPOTLIGHT**

**Emma + Holly**

“ Guiding Eyes stood out to me as a place where everyone seemed kind and helpful... I felt strongly that Holly would give me a sense of independence, freedom, and confidence, and I feel like I was right. ”

Joanne Starr  
 Anne Swan  
 Junius B. Swygert  
 Mike Tadin  
 Vivienne Talbott  
 Carol Teter  
 Tricia Thaxton  
 Vickie Thompson  
 Amy Thorn  
 Hope Tobey  
 Sharon Tupper  
 Ann Vanweelden  
 Phyllis Varacalli  
 Stavros & Berit Veletsis  
 Kevin Vernier  
 Voertman Family Fund  
 Wells Fargo Advisors, LLC  
 Bernard Westner  
 Jan Wheeler  
 Betsy Whitmore  
 Kenneth Whitney  
 Beverly Wilson  
 Craig and Barbara Wolf  
 Ronnie Wood  
 Charlie and Patty Wright  
 Patricia Wright  
 Wynndalco Enterprises, LLC  
 Georgia Young  
 Michael Young  
 Mary Young  
 John Yurtchuk  
 Kathleen D. Zurlo

**\$1,000 to \$2,499**

Ab Cord Foundation  
 Bonnie Abendschan  
 Mr. Ken Ackerman  
 Helen Adair Foundation of  
 the St. Paul Foundation  
 Carol Adams Boring  
 Darley Adare  
 Anne Aguilar  
 Clemene Alascano  
 Wendy Albert  
 Robert Albin  
 James Aldredge  
 Frank Allen  
 Sharon Allsopp  
 Joe Alvarado  
 Vincent Amatucci  
 The Amber Charitable Fund  
 Amityville Post 1015  
 American Legion  
 Deanna Amos  
 Brenda Anding  
 Richard Andracki, Esq.  
 Nancy Andrews  
 The Angell Foundation  
 Orval and Carol Ankrom  
 Karen Appelman  
 Sharon Applegate  
 Richard and Sue Aronoff  
 Paul G. Arpin Charitable Trust  
 Jeff Arnett and Ruth Ashford  
 Richard Atkin  
 Melody Atwell  
 Gary Auman  
 Deborah Austin  
 Eugene and Patricia Babb  
 Joanne Bacher  
 Mary Bachman  
 Jerre Ann Bader  
 Susan B. Bailey

Sheryl Bair  
 Eliza Baird  
 Linda Baker  
 Karen Baker  
 Carol Baker  
 James and Veronica Baker  
 Susanne Banister  
 Terrell Barch  
 Jennifer Barke  
 Barbara Barker  
 Kay Barnes  
 Gerry Barnes  
 Wayne and Kathy Baron Fund  
 at National Philanthropic  
 Trust  
 Donna Bartkowski  
 Ed Bartosiewicz  
 Anne Basiliere  
 Richard Bassett  
 John and Nellie Bastien  
 Memorial Foundation  
 Kathleen Bates  
 Belinda Bathie  
 Marie Baudet  
 Jon Bauer  
 Robert Baum  
 Randy Beasley  
 Charles Beauchamp  
 Virginia Beer  
 Dennis Belgard  
 Jeanne Belliston  
 Mark Bello  
 Matt Belski  
 Selina Beltrone-Plotkin  
 Helen Bemis  
 Tony Benjamin  
 Inez Benjamin Foundation  
 James Bennett  
 Deborah Bennett  
 Ned Bennett  
 Benvenuto Family Fund  
 Rosemary Berardi  
 Barbara Berman  
 John Bevington  
 Kankan & Samina  
 Bhattacharyya  
 Mary Bianco  
 Myra Biblowit  
 Bob and Janine Bickerman  
 Kenneth Bielemeier  
 Catherine Biernacki  
 Janet Olson-Bigham and  
 Harry Bigham  
 Barbara Bill  
 Terri and Irwin Binder  
 Lynne Birdt  
 Lee and Susan Bishop  
 Dr. and Mrs. John Bivona  
 Gretchen Black  
 Roderick H. Blackburn  
 Fund at New Hampshire  
 Charitable Foundation  
 Deborah and Mark Blackman  
 Lynn Blackston  
 Lynn Blades  
 John Blake  
 Georgia Blanchard  
 Joyce Blankenship  
 Stephen Blaskevitch, Jr.  
 Helen Blekken  
 Carolyn Bloch  
 Marsha Block  
 Bunny and Jeffrey Blood



**GRADUATE TEAM SPOTLIGHT**

**Richard + Presley**

“ After attending the Golf Classic, I knew Guiding Eyes was where I wanted to go for my own guide... With Presley, I can just be a guy who wants to walk to the grocery store. A guide dog allows you to enjoy that freedom. ”

Estelle Bloom  
 Richard and Nancy Blum  
 Claire L. Boland  
 A. Bolen  
 Jonathan Bookman  
 Norris Boone  
 Mary Bourque  
 William Bousquette  
 Mike Boyce  
 Judith Bradford  
 Craig Bradley  
 Lou Bradley  
 Kim Bradley  
 Marty Brady  
 David Bramer  
 Martha Brandon  
 Byron Braswell  
 David and Lorraine Bratcher  
 Arnold Bressler  
 Marlene Bricmont  
 Elizabeth Brinkman  
 David Brisbois  
 Carol Britt  
 Broadway Cares  
 James Brockway  
 Theresa Brokowski  
 Kathryn Brolin  
 Sharon Bromberg  
 David Brooks  
 Linda Browdy  
 Harold Brown  
 Hope Brown  
 Sue and Leland Brown  
 Craig and Janet Brown  
 Kevin Brown, M.D.  
 Mary Bruchmann  
 Fred Brunke

Robert Bruns  
 Karen Buckley  
 Bonita Bula  
 Donna Bumpass  
 Theodore Bunnell  
 Janet Burdsall  
 Raymond Burke  
 Heather Burke  
 Beverly Burns  
 John Burtis  
 Rose Burton  
 Donna Burzynski  
 R. P. Buschmann Family Fund  
 Holly Buse  
 Larry R. and Peggy J. Busscher  
 Sharon Butcher  
 Michael Cacheiro  
 Peter Calkin  
 Tim and Deborah Callahan  
 Tracy Cameron  
 Linda Campbell  
 Michelle Capdeville  
 Mondo Cares  
 Jacob Carlin  
 David and Martha Carnahan  
 Jennifer Carpenter  
 Michael and Mary Carpenter  
 Mark and Anne Carron  
 Roy Carruthers  
 Karin Carson  
 Stephen Cartolano  
 Robert Cartwright  
 Robert Case, Dvm  
 Elizabeth Casey  
 Ernest and Suanne Casseday  
 Ron Castine



## GRADUATE TEAM SPOTLIGHT

### Marie + Charles

“ I applied to Guiding Eyes because I learned a guide can help you if you have balance issues... Walking is a lot better with Charles, and I’m faster, too. ”

Cattaraugus Region  
Community Foundation -  
Mildred Milliman Fund  
Margaret Cavenagh  
David Chabot  
Deardre Chao  
Aafia Chaudhry  
Ronald Chernow  
Linda Chestnut  
Childers-Lackland Foundation  
William Chiles  
Kirstin Chmara  
Randolph Christen  
Herman Christensen  
Paul and Vicki Chrobak  
Jean Churchill  
Robert Clark  
Daniel Clark  
Dorothy Clark  
Marilyn Cleland  
Arlene Clement  
The Harry Cobey Foundation  
Michael Cobler  
Michele Cocco  
Hans Coffeng  
Cecilia Colbert, Ph.D.  
Faith Colish Fund of The New  
York Community Trust  
Patrica Colleton  
William Collins  
Vicki Collins  
Michael Conlon  
Nancy Conro  
Virginia Coogler  
Gwendolyn Cooley  
Kerry Corboy  
Cornerstone Advisors Asset  
Management, LLC  
Peter Coscia

Ernest and Carol Covey  
Cindy Cox  
Patricia Cox Strasburger  
Robert Craig  
John Craig  
James Creech  
David and Anne Cremons  
Jennifer Crist  
William E. Cross  
Foundation, Inc.  
Agnes Crowley  
Marion Croxton  
The Crystal Family  
Foundation  
Eleanor Cutshaw  
G. Richard Cutter  
Antoinette and George Daab  
April and Nicholas D’Amato  
Jennifer Daniel  
Mark D’Antonio  
Marsha Dart  
Linda Davenport  
Jane Davidson  
Christine Davis  
Carol Davis  
Sharon Davis  
Suzanne Davis  
Pat Davis  
Karen De Blanc and  
Paul Fellenbaum  
Mary Lynn De Loatch  
De Sanctis Family  
Jill Decesare  
Larry Dee  
Deborah Deems  
Deer Run Amish Church  
Suzanne Deis  
Gustavo Del Toro  
Rosa Delaney

Christina Dell  
Janet Demuth  
Bonnie Denko  
Lori Derose  
Linda Dettloff  
Paul Deutsch  
Angela Devietro and  
Judy Mitchell  
The Dibona Family Foudation  
Mary Di Iulio  
Carl Diehl  
Susan Dill  
Mary Dillon  
Steven Dills  
Andrew Diloreto  
Nicholas DiMiceli  
Lisa Dinoto  
Amanda DiPrizio  
Irene Dodd  
Jennifer Donald  
Harry Donenfeld Foundation  
Thomas Donnelly  
Helen Doppelt  
Michael Dorula  
Faith Doub  
Kathy Dougan  
David and Deborah Douglas  
Virginia Douglass  
C Downer  
Anita Doyle  
Anthony Dresden  
J Richard Du Bois  
Cheryl Dubs  
The James and Ann Duffy  
Charitable Fund  
Bev Dufilho  
Robbie Dunlap  
Martha Dunn  
Louis Durko  
Susan Dusenberry  
Dede Duson  
Chizuko Dutta  
Donna Earhart  
Joyce Edwards  
Andrea Eisenberg  
Karen Elkin  
Elaine Ellenbogen  
Robert Ellis  
Cornelia Ellner  
Elaine Emrick  
Sandra Ennis  
Paul Erisman  
Lisbeth Esperti  
Louis Esposito  
David Evans  
Jane Evans  
John Evans  
Karen Evans  
Eckhard Fadtke  
Fran Faller  
Neal Farber  
Donna and Stuart Farber  
Family Foundation  
John Fareri  
Sandra Farmer  
Tracey Farrell  
Dennis and Diane Fashano  
David Fein and Elizabeth  
Oestreich  
Gary J. and Susan O.  
Ferrentino Foundation  
William K. Fescenmeyer  
Terrence Fetters

The Feuerring Foundation  
Laura Fey  
Fidelity Brokerage Services  
L.L.C.  
John Fish  
Norman Fitzgerald  
James Fitzgerald  
Steven Flagg  
Tracy Flannery  
Judy Flath  
Elizabeth Fleming  
Steve Floyd  
Betty Fogleman  
Vincent Foglia  
L and Laura Forbes  
William and Mary Forcellon  
Annette Ford  
Ellen Forte  
Dan Foss  
Frank B. and Susan Fowler  
Eleanor Fox  
Gary Fox  
Renate Franco  
Patricia Frank  
Susan Frank  
Shawnee Frantom  
David Frattaroli  
Joy Freda  
Debbie Freedman  
Kathryn Freiburger  
Diane Froot  
Andrew Fu  
Richard and Ilona Fucci  
Susan Fulton  
Shannon Funt  
Annette Furst and L. J. Miller  
Angela Fusaro  
Charles Futrell  
Cornelia Futterman  
F. Gaitan  
Susan Galicki  
John and Cheryl Galli  
John Gannett Jr.  
Robert Garbacz  
John Garbarino  
Kate Gardner  
Gene Gardner  
Nathan and Patricia Garland  
Craig Gaw  
GBH Foundation  
Gerald and Leslie Geist  
Molly Gennaro  
Maxine Gensior  
Karla Gentile  
Steven Geyster  
Anita Ghilardi  
William Gibbons  
The Gibney Family  
Foundation  
Paulette Gillig  
Irma Gilmore  
Merle Gilmore  
Diane Gilroy  
Christina Gish  
Lynne Glennon  
Norman Glick  
Stuart Glick  
Mr. and Mrs. Michael  
Glosserman  
Nelida Godfrey  
The Goeppinger  
Charitable Fund  
Edwin Gold

Craig Goldman  
 Irwin Goldstein  
 Ruth and Sheldon Goldstein  
 Foundation  
 Roger Golec  
 Steven Good  
 Marilyn Goodland  
 Myra and Drew Goodman  
 Nancy Goodman  
 Karen Gordon  
 Teri Goupille  
 Kalathur Govindarajan  
 Connie Goyda  
 Maude Grantham-Richards  
 Dana M Grassi  
 Patricia Graves  
 Joseph Gray  
 Ita Greaney  
 Greater Kansas City  
 Community Foundation -  
 Trembath Charitable Fund  
 Eleanor Greenwood  
 Russel Grillot  
 Sean and Miriam Grogan  
 Howard and Joan Gross  
 Gucci  
 Darlene Gulino  
 Amy Gussack  
 Judy Hansen  
 Alfred Hanson  
 D Hardee  
 Theresa Harper  
 Rolfe Harris  
 Larry W. Harris  
 John and Anna Hart  
 Christine and Dick Hart  
 Judy Hartman  
 Charitable Fund  
 Carolyn Hartner  
 John and Nancy Hartung  
 Jason Hauben  
 Andreas Hausler  
 The Ellie and Les Hayt Family  
 Foundation  
 Neal Heffron  
 John Heisch  
 Peter and Lynn Hendricks  
 Mary Hendrickson  
 James Hendrickson  
 Nancy Henley  
 Cynthia Herr  
 Homer & Rhea Hershey  
 Roger Hess  
 Thomas Hester  
 Justin Higginbotham  
 Christine M. and Paul Zack Hill  
 Mike Hill  
 Michael Hill  
 Albert Hill  
 Charlotte Hines  
 Kenneth Hipkins  
 Frances Hitchcock  
 Janet Hixson  
 Jack Hodges  
 Earl Hoffman  
 Janet and Kenny Hoffman  
 William Hoffmann  
 Ralph Hofheins  
 Kathryn Hollingsworth  
 Danforth Hollins  
 Carol Holly  
 David L. Holman  
 J. Holmes

Valerie Holmes  
 Holy Trinity Church  
 Doreen Holze  
 Wendy Home  
 N. Honeck  
 Kathleen M. Hoover  
 Gary Hopkins  
 Barbara Hopper  
 James Hornicek  
 Jan and Jim Hovda  
 Verna Howard  
 Teresa Huang  
 Mark Huber  
 H. Glenn Huddleston  
 Stacey Hughes  
 David Humphrey  
 Brock Hunsaker  
 Nancy Hunter  
 David Hunter  
 Barbara Huntley  
 Judy Hurley and  
 James J. Hurley III  
 Francesco Iacopelli  
 iHop  
 Helen Imhoff  
 Jack Intrator and  
 Debrah Welling  
 Teresa Ittner  
 J.W. Mitchell Company  
 Yvonne Jackson  
 William and Judith Jackson  
 Brian Jackson  
 Mary Jackson  
 L.C. & Margaret B. Jacobson  
 Memorial Foundation  
 David Jacobson  
 Marian Jamison  
 Marcia Jeffries  
 Patricia Jenkins  
 Elizabeth Jennings  
 Cathy Jennings  
 Keith Jennings  
 Hans Jepson  
 Robert Johns  
 Earlene Johnson  
 Carolyn Johnson  
 Carol Johnson  
 Trevor and Robin Johnson  
 Wendy Johnson  
 Julie Johnson  
 David and Sharon Jollie  
 Almira Jones  
 Roland Jones  
 Phyllis Jones  
 Arlene Jordan  
 George Joseph  
 Andrea Joyce  
 Andrew Judelson  
 Susan Kahn  
 Joseph Kalista  
 Lawrence Kalivoda  
 Carol Kane  
 Caren Kaplan  
 Warren Kaplan  
 Rita and Henry Kaplan  
 Christine Karas  
 Brown Karenanne  
 Karen's Hope Worldwide  
 Lois Kaserman  
 Kitty Katz  
 H. Kaufman  
 Michael Keith  
 Eileen Kelleher-Ornelles

Johanna Kelleman  
 Suzy Keller  
 Margaret Keller  
 Arleene Keller  
 The M. J. Kelley Foundation  
 Molly Kelley  
 T. Kelley  
 Carol and Scott Kennedy  
 Daniel Kennedy  
 Elsie Kennedy  
 Susan Keppler  
 Janet Kern  
 Dennis Kern  
 B. Kerrisk  
 Carolyn Kiess  
 Lucille Kietzer  
 Murray and Jeanie Kilgour  
 Robert Kimball  
 William King  
 Gerald King  
 Connie King  
 Dennis and Mary King  
 John E. Kirzl  
 Christine Klein  
 Kleinow Family Foundation  
 Kay Klinger  
 Lisa Knight  
 Melinda Knight  
 Georgia Knotek  
 Judy Knowles  
 Nancy and William Koch  
 William Koehler  
 Linda Kohn  
 Joel and Joanne Kolb  
 Jennifer Kolber  
 Pamela Kollar  
 Allan Koptish  
 Dennis Koskey  
 Richard Kourbage  
 R. Patrick and Amy Krause  
 Brian Krebs  
 Day Krolik

Carol Watson and  
 Gregory Kunert  
 Margaret Kuschel  
 Marybeth Kynerd  
 Katherine Lacek  
 William Laivo  
 Roma Landry  
 Curt and Diane Landtroop  
 Joy Lane  
 Diane Lane  
 Kathleen Langanki  
 Marvin P. Langanki  
 William Langley  
 Valerie Lankford  
 Margaret Lapcewich  
 Loviah Lappin  
 Betty Larsen  
 Rebecca Lashley  
 Amy Lau  
 Robert Laubach  
 William Laux  
 Mike and Helen Lawlor  
 Jerome Lawson  
 Melvin Lazar  
 Linda Leamon  
 Martha Leavenworth  
 Diane Lee  
 David Lee  
 Joann Lee  
 Renato Lee  
 Cynthia and Andy Lees  
 Marcia Lefkowitz  
 Arthur Leibowitz  
 Marcella Lentsch  
 Marjorie Leonard  
 Joe and Karen Leonard  
 Charitable Fund  
 Kenneth and Robin Leopold  
 Laura Lester  
 Christine Lethcoe  
 John Lewey  
 Jan Lewis  
 Nury Lewis

**GRADUATE  
 TEAM  
 SPOTLIGHT**

**Avelash +  
 O'Neil**



“ O’Neil is beyond anything I expected. The class I was in was diverse, both in age and in our time being blind. We developed a sense of community and still stay in touch. Friends forever. ”

Kathleen Lewis  
 Allyson Lightbody  
 Alice Lin  
 Lincoln Investment  
 Mathew and Carolyn Linett  
 Linwood and Trudy Parker  
 Charitable Fund  
 Susan Litwer, Esq.  
 Ron Livingston  
 Anne Lloyd  
 Paul Lodola  
 Emma and Craig Loftus  
 Doris Lombardi  
 Janette and David Long  
 Dan Longo  
 Wesley Looker  
 Mr. Joseph Loonan  
 Willis and Joe and  
 Judy Lothrop  
 Sally Lovejoy  
 Lynne Lovell  
 Julie and Israel Lowy  
 Sheila Lucas  
 Richard and Sandy Ludwick  
 Eric Lund  
 Helen Lundeen  
 James Luzod  
 Kelsie Macfadyen  
 Christine Mack  
 Janet Mackin  
 Barbara Macleod

Joy Macqueen  
 Scott Macrury  
 Christina Madden  
 Anne Magee  
 Tom Maheras  
 Brian and Florence Mahony  
 Fund  
 George Mahoney  
 Patricia Majerus  
 James Maldonicky  
 Shiyoe Malinasky  
 Kay Malmquist  
 Suzanne Manieri  
 Mark Manion  
 Archie and Olivia Manning  
 Mark Manthey  
 Carol March  
 Marge and John Callahan  
 Charitable Fund  
 Jeffrey Mariani  
 Linda Marino  
 Carla Marone  
 Martha and Bruce Marquand  
 James Marsh  
 Keith Martin  
 Barbara Martin  
 Anthony Martuccio  
 Katherine Martyn  
 Donna Mason  
 Mark Massarella  
 Donna Masse

Betty Matarese  
 Antoinette Matijevich  
 Vladimir and Larisa  
 Matsiborchuk  
 Ellen Mattesen  
 James Matthews  
 Scott Mayer  
 Janet Mazzarella  
 Paul Mc Clintock  
 Hugh McAfee  
 Richard McCall  
 Joan McCallum  
 Mary Ann and Gerrold  
 McCammon  
 Jean McCleary  
 Larry McConville  
 Linda McCorkle  
 Melissa McCorkle  
 Florence McCullough  
 Jeanette McDaniel  
 Vincent McGonagle  
 John McGran  
 Beverlee McGrath  
 Suzanne McGraw  
 Mary McGuire  
 R. McIllece  
 Sarah McIntyre  
 Anne McKenna  
 John Mckeon  
 Vanessa McLean  
 The McLean Foundation  
 Candace and  
 Steven McMaster  
 McNabb Foundation  
 Allan Mehrtens  
 Margareta Meier  
 Robert Meier  
 Dorothy Meindl  
 Christine Meneely  
 Suzanne Merrill  
 Harumi Merritt  
 Metzger-Price Fund, Inc.  
 Teri Meyer  
 Gregory and Brenda Meyer  
 Meylan-Caflisch  
 Charitable Fund  
 Jeffrey and Jeanne Miller  
 Kenneth Miller  
 Robert Miller  
 Gene Miller  
 Cheryl Miller  
 Susan Mills  
 Elaine Mills  
 Isaac Osaki  
 Linda Mionske  
 Doreen Mirante  
 Carol Miskill  
 Ken Mitchell  
 Jacqui Modesti  
 Patricia Mondello  
 Alicia Montalvo  
 Jani Moore  
 Donna Moore  
 Barbara Moore  
 Sarah Moore  
 Erhard Moosmann  
 Moran Family Foundation  
 Barbara Morano  
 Richard Morgan  
 Pamela Morgan  
 Jennifer Morrell  
 Patricia Morrison  
 Robert Morrison

Bonnie Mortag  
 Gene Moscovitch  
 Agnes Mulrone  
 Nicole Murch  
 Peter Murphy  
 Robert Murphy  
 Maria Murphy  
 Eileen Murphy  
 Marilyn and Paul Murray  
 Janet E. Muyskens  
 Pamela Myers  
 David and Inez Myers  
 Foundation, a supporting  
 foundation of the Jewish  
 Federation of Cleveland  
 Lloyd Nagle  
 David Nagle  
 Anthony Naples  
 Edward Nass  
 National Christian Foundation  
 Jame and Louisa Neel  
 Stephen Neff  
 Susan Neilson  
 Greg Nelson  
 John Nelson  
 Victoria Nelson  
 Iris Nelson-Schwartz  
 Brett and Denise Nemanich  
 Ronald Ness  
 Cindy Newton  
 Charlotte Prescott Newton  
 Brett and Mary Nichols  
 Mary Nielson  
 Edythe Nimick  
 Beth Norman  
 Helen Nover  
 Linley Oberman  
 David O'Brian  
 Daniel O'Brien and  
 Bemadette O'Connor  
 Charitable Fund  
 Daniel O'Day  
 Stefanie Offit  
 Alice O'Halloran  
 Carolyn Olshein  
 Cyrus Omidyar  
 Gwynne O'Reagan  
 Ms. Randee Rothman and Ms.  
 Wendi Orlando  
 Robert Orosz  
 Ann Osti  
 Faith Ostwald  
 Sue Ouellette  
 M. Joyce Ousley  
 John Ozolek  
 Christopher and  
 Christina Padilla  
 Geraldine Palmer  
 Michael Palmer  
 Vicki Palmore  
 David Parkinson  
 Anne and Hartmat Parnitzke  
 Charles Parrish  
 Nancy Parsons  
 Julie Patthoff  
 Kalyn Paul  
 Paul Payne  
 Karen Pederson  
 Carolyn Pedone  
 Georgia Peirce  
 Deborah Pepe  
 Perkins & Will  
 Sara Perry



## GRADUATE TEAM SPOTLIGHT

### Kalia + Roswell

“ From the initial home visit to my training with Roswell, Guiding Eyes has been professional and provided all the necessary support and follow-up... I am so happy and enjoying my freedom. I feel like nothing can stop me! ”

William Persampieri  
 Jeanette Peter  
 Pamela Peters  
 Imogene Peters  
 Marie Louise Peters  
 Shirley Petersen  
 Kai Petersen  
 Carol Petersen  
 Susan Petrick  
 Carol Petrillo  
 Cynthia Petrow  
 Helene and Joshua Peyser  
 Catherine Pfeil  
 Daniel Phelan  
 Nancy Phillips  
 Michael Phillips  
 Robert Phillips  
 Patricia Beck Phillips  
 Foundation  
 Amos and Tami Pike  
 Michael Piotrowski  
 Mathias Piskur  
 The Pittsburgh Foundation  
 Cheryl L. Pitz  
 Lois Placke  
 Monica Platt  
 Vera Plescia  
 Theodore Plucinski  
 Carolyn Pogar  
 Sheryl Polese  
 Simone Polk  
 Lisa Pommer  
 Dick and Sue Porth  
 Posner - Wallace Foundation  
 Carol Postell  
 Sharyn Poston  
 Ruth Powell  
 Jennifer Powell and  
 Andrew Wiley  
 Mark Powell  
 Maureen Previti  
 Edgar Pritchard  
 Donna Pritula  
 Linda S. and Michael Purvis  
 Adolph Quasthoff Foundation  
 Roberta Quiat  
 Robin Quirk  
 Eric Rafalski  
 Melinda Raffe Trovini and  
 Melinda Trovini  
 Rosemary Rafter  
 Rainy Day Fund of the  
 Community Foundations of  
 the of the Hudson Valley  
 Nestor Ramirez  
 Chuck Ranberg and  
 Bob Fisher  
 Linda Randell  
 Angela Rapone  
 Douglas Ratcliffe  
 Alvin Ravenscroft  
 Recreation Farm Society, Inc.  
 Thomas Reed  
 Beverly Rees  
 Carol Reeves  
 Deborah Reher  
 Claire Reid-Adkins  
 Donna Reimer  
 Donald Reinhard  
 Barbara Reining  
 Jeanne Reiser  
 Nancy S. Reish  
 Alyson and William Reitz

Teresa Remaley  
 Trudy Remmick  
 Julie Rendina  
 The Reutzel Foundation  
 Vonna Reynolds  
 Douglas Ricci  
 Peggy Rice  
 The Riklin Charitable Trust  
 Craig Ring  
 Carolyn Rini  
 Bruce Rinne  
 Jane Ritchie  
 Elizabeth Roberts  
 Sandra Roberts  
 John Roberts, Jr.  
 Jim Robinson  
 Joe and Maggy Robinson  
 Christina Robleto  
 David Rock  
 The John A. Rodger Jr.  
 Foundation  
 Joanne Rodgers  
 Daniel Rodgers  
 Sandra Rodolf  
 James Rogers  
 Lee Rogers  
 Ron Rohde  
 Thomas Rollins  
 Richard Romeo  
 Randolph Roody  
 Bridget Roots  
 The Roron Foundation, Inc.  
 Charles and Caryl Rose  
 Daniel Rosen  
 Mel Rosenfeld  
 Michele Rosenmutter  
 Ross Ross and Carol Weale  
 John and Karen Rossetti  
 Deborah Rossi  
 Marianne Rossi  
 PJ and Karen Rossi  
 Robin Rotiroti  
 Jeanne Rovaldi-Manning  
 Patsy Rowland  
 Myrna Rubenstein  
 Leonard Rubin  
 Arline Rubin  
 Heidi Rubinstein  
 Ann Ruchhoft  
 Elaine Rudder  
 Elinor Ruffing  
 Mary Ruffo  
 John Rufi  
 Linda and Don Rumley  
 Judith A. Rusher  
 Evelyn Russell  
 Maurice Russell  
 Craig Russell  
 Peter and Nanette Ryerson  
 Patricia Saisselin  
 Beth Saltzman  
 Anthony and Jane Santy  
 Vanessa and Suhas Sarathy  
 Shelley Sarrin  
 Donald Sartell  
 Julie Saunders  
 William Schaeffer  
 Richard Schechter  
 Robert Scherer  
 The Robert M. Schiffman  
 Foundation, Inc.  
 Gertrude Schlabach  
 Lynn Schlanger

## GRADUATE TEAM SPOTLIGHT

### Melchion + Larson



“ Since getting Larson, I am impressed at how quickly we walk together. It almost feels like we are gliding along or dancing! Although he is my first guide dog, the training experience was amazing, and it came very naturally to me. ”

Mark Schlau  
 Robert Schlegel  
 Gary Schmalzriedt  
 Carola Schmid  
 Arthur Schmidt  
 Robert Schmidt  
 Frederick K. Schoff and  
 Maureen A. Mackey  
 Charitable Gift Fund  
 Ethan Schrader  
 Mary P. Schreiber  
 Schulman Foundation  
 The Susan and Ford  
 Schumann Foundation  
 Evelyn Schwager  
 Jo Schweinle  
 Rudolph Scialo  
 David Scott  
 The David and Marilyn Scott  
 Charitable Fund of the Ayco  
 Charitable Foundation  
 Daniel Scully  
 Kristen Seddon  
 Judi Segebarth  
 Lisa Seifert  
 Lewis Seiler Jr  
 Leslie Seinfeld  
 Tamson Sell  
 Gary and Virginia Semrow  
 Monica Sesko  
 Powell and Bonnie Seymour  
 William Shaffer  
 Stephen Shafran  
 Madeleine Shaughnessy  
 Hannah Shaw Medina  
 Debra Shearer  
 Olivia Sheckleton  
 Billy and Bonny Shelton  
 Marilyn Shenenberger  
 Ruth Shepard

Pat and George Shepherd  
 Brenda Sheridan  
 Stephen Shewbrooks  
 Anne Shinn  
 Marilyn Short  
 Gerald B. Schreiber  
 Foundation  
 Anne Sibbald  
 Albert Sickinger  
 Susan Silbermann  
 Devon Silberstein  
 Martha Silver  
 The Simon Family Fund  
 David Simone  
 Claudia Simons  
 Gary Simpson  
 Candace Sinclair  
 Site Design Consultants  
 Elizabeth Skarnulis  
 Harold Skolnick  
 James Skrocki  
 Michael Sloane  
 Sandra Slusarczyk  
 Katherine Smith  
 Theresa Smith  
 Annabelle Smith  
 Walter Smith  
 Kemp and Catherine Smith  
 Sean Smith  
 Leola Smith  
 Ken Smith  
 David Sokol  
 David Sorley  
 Colleen Southern  
 Mary Spencer  
 Richard Spielberg  
 Susan Spinucci  
 A. William Spiry  
 Janice Spredemann  
 Marian Staffel

Kelly Stafford  
Glenn Stambaugh  
Paige Starr  
Sharon Stealey  
Jo Steele  
Dennis Steger  
Gordon Steib  
Robert Stephen  
Conrad Stephenson  
Scott Stern  
Lynn Stern and Jeremy Lang  
Kathy Steve  
Jeanie Stevenson  
David Stock  
Linda Stohon  
Nikki Stokoe  
Ralph Stone  
Hayes and Patricia Stover  
Elaine Strachan  
Beth Stratton  
Marjorie Strelzyn  
Scott Stroinski  
Joanne Suarez  
Linda Sullivan  
Geoffrey Summers  
Weilin Sung  
Kyle Swift  
John Sykes  
Lesley Tallack  
Nicolaos Tapazoglou  
Christy and Ken Taucher  
Donor Advised Fund of  
Central Carolina Community  
Foundation  
Melody Taylor  
Nita Taylor  
Maria Teixeira  
Adele and Robert Tetzloff  
THD - Thompson Habib  
Denison

Earl Thoffman  
Kelly A Thomas  
Hilaire Thomas  
Thomas Thomasma  
James Thompson  
Thompson/Pavco Charitable  
Fund  
Carla M. Thorpe  
Sandra Thurston  
Eileen Tiberio  
Nadine Tilley  
Anita Toler  
Charlie Tonkin  
Robyne Townsend  
Townsend Family Trust  
Frank Trainor  
Mary Travis  
Gail Triggs  
Myrl Trimble  
John Troutman  
Mary Trovato  
Cathy Trumbull  
Daniel Trusler  
William Tucker  
Glen E. Tullman Fund of the  
American Endowment  
Foundation  
Nancy Turcotte  
Irene Tyson  
Stephen Ucko  
Marilynn Unruh  
Anne Urban  
Ali Usafee  
Patsy Vacarella  
Marianne Vakalis  
John Van Buskirk  
Robert Van Der Wateren  
Judith Van Reusselaer  
Andrea Vasquez  
Patricia and James Verdon

Vermont Community  
Foundation  
Helen Verven  
Jerryd and Kathy Vetter  
Anthony Vitale  
Barbara and Charles Voelker  
Dawn Voigt  
Kathy Vollano  
Michaelene Wadolny  
Shirley Wahlberg  
Jeannette Wahlen  
Robert J. Waldeck  
Linda Wallace  
The Wallace Family Education  
Fund of Renaissance  
Charitable Foundation  
William Walsh  
Mr. and Mrs. David Warren  
Veronica Warwick  
Mark Watowich  
Ellen Watson  
Rachel Wegter  
J. Weinstein Foundation, Inc.  
Jane D. Weiss Family  
Foundation  
Joann and Richard Weiss  
Gregory Weiss  
Barbara Wells  
David Wentz  
Sandra Werner  
John Werner  
Joan Western  
Lynne Weston-Pontikes  
William Whaley  
Marie Wheeler  
George Whipple  
D. Whitcomb  
Paula White  
Herb and Gayle White  
Paula White

Yvonne Wiesen  
Sue Wilkinson  
Charlene Williams  
John Williams  
Joan Williamson  
Kathleen C. Wilson  
Sylvia Wilson  
Stephen Wilson  
Glenda Wisweman  
Jack Witkin  
Polly Wojnaroski  
Doris Wolfe  
Adam Wolfson  
John Wood  
Diana Wortham  
Rosemarie Wyke  
Ann Yahner  
Chul Yang  
John Yanni  
Margaret Yarina  
Ruth Yates  
Charlotte Weidaw and  
Franklin Yeager  
Shellie Young  
M. Young  
Krystal Zahniser  
Mark and Phyllis Zames  
Mark Zames  
Jennie Zantias  
Zarin & Steinmetz LLP  
Cynthia Zarsky  
Nicon Zasorin  
Charles M. and Esther Zell  
Foundation  
Patricia Zima  
Jane Marie Zoltowski  
Neal Zung  
Zvilin Fund of the Princeton  
Area Community  
Foundation

## Lions Clubs

Aberdeen Lions Club  
Alfred Lions Club  
Amherst Lions Club  
Armonk Lions Club  
Ballston Spa Lions Club Foundation  
Belfast Lions Club  
Blauvelt Lions Club  
Bloomfield Lions Club  
BMW Lions Charity  
Bolivar Lions Club  
Brookfield Lions Club  
Brookville-Timberlake Lions Club  
Clarendon Lions Club  
Colchester Lions Charities Inc.  
Cold Spring Lions Club  
Dansville Lions Club  
East Aurora Lions Club  
Essex Lions Charities Inc.  
Fairport Lions Club, Inc.  
Fulton Lions Club  
Germantown Lions Club  
Glens Falls Lions Clubs

Goshen Lions Club  
Hadley-Luzerne Lions Club  
Hebron Lions Charities  
Int'l Association of Lions Clubs  
#8439  
Jacksonville Beaches Lions Club Inc.  
Jeffersonville Lions Club  
Kingston NH Lions Foundation Inc.  
Lake Placid Lions Club  
Lakeland Lions Foundation  
Lions Club of Olcott  
Lions Club of Pleasantville  
Lions Club of Sodus  
Lions Club of St. Louis, Southside  
Lions Club of Valhalla Charities Inc.  
Medina Lions Club  
Montville Mohegan-Pequot  
Lions Club  
Mystic Lions Community Foundation  
New York Washington Heights  
Inwood Lions Club  
Newtown Lions Club

Nine Partners Lions Club  
Norshaft Lions Club  
North Rockland Lions Club  
Foundation Inc.  
Ovid Willard Lions Club  
Palmyra-Macedon (Pal-Mac)  
Lions Club  
Pine Bush Lions Club  
Powhatan Lions Club  
Rondout Valley Lions Club  
Solvay Geddes Lions Club  
South Brunswick Lions Club  
Tolland Lions Club  
Town of Wright/Schoharie Valley  
Lions Club  
Warwick Lions Club  
Waterford Regional Lions Club  
West Seneca Lions Club  
Youngstown Lions Club

## In-kind Gifts

M. Barclay  
Benebone LLC  
Cindy Altman  
Jolly Pets

Nutramax Laboratories, Inc.  
Nylabone Products  
Pilots To The Rescue  
Ruffwear

The Kong Company  
Zoetis



## Matching Gift and Employee Giving Programs

3M Company	Cisco Systems, Inc.	IQVIA, Inc.	Regeneron Pharmaceuticals
Abbott Laboratories	Citizens Charitable	Ituit	RELX Inc.
AbbVie Inc.	Foundation	J. Crew	Roblox
Accenture	Cleveland-Cliffs Inc.	Johnson & Johnson	Roche Diagnostics
ADP	Colonial Pipeline Company	Johnson Controls	S&T Bank
Aerojet Rocketdyne	Comcast	JP Morgan Chase & Co.	Salesforce.org
Agilent Technologies	Con Edison	JustGive	Shell Oil Company
AIG	Corning	Kaiser Permanente	Sherwin-Williams
Alight Solutions	Costco	KeyBank	Solidigm
Ally Financial Inc.	CVS	KKR & Co. Inc.	SS&C Technologies
AmazonSmile Foundation	DaVita	L3Harris Technologies	Standard Insurance Company
AMC Networks	Dell	Lenovo	Stanley Black & Decker, Inc.
American Express	Deutsche Bank	Levi Strauss	Starbucks
American Family Insurance	Discover Financial	LexisNexis	State Farm
America's Charities	DocuSign	Liberty Mutual Group, Inc.	State Street
Ameriprise Financial	DTCC	Lilly Endowment Inc.	Subaru of America
Amica Mutual Insurance	Duke Energy	LinkedIn	Sun Life Financial
Company	Eaton Corporation	Lumen	Symetra Life Insurance
Anchor QEA, LLC	Ecolab	Macquarie	Synchrony Financial
Anheuser-Busch	Elevance Health	Major League Baseball	T. Rowe Price
Apollo	Equinix, Inc.	MassMutual	Tapestry Foundation
Apple Inc.	Equitable Foundation	Mastercard	TD Bank Group
Applied Materials	Estee Lauder	McCormick & Company, Inc.	TEGNA Foundation
Arch Insurance Group, Inc.	Eversource Energy	McKesson Foundation	Textron
Artisan Partners	Exelon Foundation	McKinsey & Company	The Auto Club
AstraZeneca Pharmaceuticals	ExxonMobil	Medtronic	The Clorox Company
AT&T	FINRA	MGM Resorts Foundation	The Hartford
Autodesk Foundation	First Technology Federal	Microsoft	The Home Depot
Baird Foundation, Inc.	Credit Union	Mondelez International	The Humana Foundation
Bank of America	Fitch Ratings	Morgan Stanley	The Related Companies
Becton, Dickinson and	FM Global	Morgan Stanley & Co.	The Walt Disney Company
Company	Fox Corporation	Mutual of America	Thermo Fisher Scientific
Benevity	Freeport-McMoRan	National Semiconductor	Thrivent Choice
Benjamin Moore Paints	Foundation	Technology Center	Toast.org
Berry Global	Frontstream Credit	Nationwide Insurance	Toyota
Best Buy Foundation	GAF Materials	Network for Good	Travelers Insurance
Biogen MA Inc.	Gap Inc.	New York Life Insurance	U.S. Bank
Blackbaud, Inc.	GBU Financial Life	Company	UBS
Blackrock	General Atlantic	Newport News Shipbuilding	United Health Group
Blue Shield of California	Getty Images	Nordson Corp.	Unum Group
BMO Financial Group	Gilead Sciences, Inc.	Nordstrom	USAA Foundation
BMO Harris Bank	Give Back Foundation	NVIDIA	Vanguard
BNY Mellon	Give Lively Foundation, Inc.	Oracle	Veeva
Boeing	Givinga	Palo Alto Networks	Veridigm
Boston Consulting Group	GlaxoSmithKline	Paypal	Veritas Technologies
Boston Scientific	Google, Inc.	Penguin Random House	Verizon
Braze	Graco	Pentair	Vertex
Bright Funds Foundation	Guardian Life Insurance	PepsiCo	VISA, Inc
Bristol Myers Squibb	Company of America	Pfizer, Inc.	VMLY&R Foundation
Foundation	Hanover Insurance Group	Phillips 66	Voya Financial
Broadcom	HCA Healthcare	Pitney Bowes, Inc.	Warner Brothers Media
Brookfield Properties	Hewlett-Packard	PPG Industries	Wells Fargo & Company
Cambia	Horizon Therapeutics	Preformed Line Products Co.	Weyerhaeuser
CarMax	HP	PricewaterhouseCoopers	William Blair & Company, LLC
Catepillar	IBM	Progressive Insurance	Workday, Inc.
CBRE	Illinois Tool Works, Inc.	Prospect Hill Foundation	Wyndham Hotel Group, LLC
CBS	IMF	Prudential	Xcel Energy Foundation
Charities Aid Foundation	Indeed	QVC	Yahoo
Charles Schwab & Co., Inc.	Insperty	Raytheon	YourCause, LLC
Chevron	Intel	RBC Capital Markets	Zoom
Cigna	Intuitive Surgical	Red Hat, Inc.	ZS Associates

Guiding Eyes is grateful to the more than 250,000 generous individuals who support us throughout the year. We have made every effort to ensure the completeness and accuracy of this list. However, if you notice an error, please accept our sincere apologies and notify us at [info@guidingeyes.org](mailto:info@guidingeyes.org).

## Bequests and Trusts

Estate of Alvin A Albright Jr  
Estate of John R. Alstadt, Jr.  
Estate of Jeanne A. Barnett  
Yoshiko S. Bauer Trust  
Betty Jane Bell Charitable Trust  
Estate of Eleanor G. Bellotto  
Black Living Trust  
Yvonne Ives Blaich Revocable Trust  
William T. Bonomi Trust  
Estate of Ingeborg M. Borre  
Estate of Claire Buckalter  
The Paris-Buttner Charitable  
Remainder Unitrust  
Josephine T. Carvill  
Revocable Trust Agreement  
Estate of Judith A. Cavanaugh  
Jean B. Celsor Estate  
Estate of Thomas J. Cherry  
L. Glenn Christie Jr. Charitable Trust  
William Richard Jeffrey Cobb Trust  
Estate of Dr. Elizabeth Collins  
Dorothy D. Conkey Trust  
Coombs - Robbins Trust Fund  
Estate of Marlene Cruce  
Estate of Phyllis J. Cuviallo  
The Hannelore N. D'Elia Living Trust  
Estate of Leonie N. DesRosiers  
Estate of Michael Dunford  
Edmund N. Duzik and  
Marilyn A.P. Duzik Trust  
Gordon Eaton Revocable Trust  
Stuart Eisler Revocable Trust  
Estate of Sondra Elkins  
The Agnes Erlandson Trust  
W. Moreland and Ruth U. Ernst  
Charitable Trust  
Doris S. Featherstone Revocable Trust  
Revocable Trust Agreement of Mary  
Spencer Watkins Ferchaud  
Estate of Joan L. Ferry  
Residuary Trust U/W Charles S. Fiske  
Estate of Albert Formica  
Sanford Fox Irrevocable Charitable  
Remainder Unitrusts  
Estate of Margaret Fritze  
The Sharon Fuqua Revocable Trust  
Estate of Ronald F. Furman  
Edward J. Gallagher and Josephine V.  
Gallagher Living Trust  
Estate of Lawrence Gibstein  
E. Allen and Adelaide R. Ginkinger  
Memorial Trust  
Julia D. Gkonos Trust  
Johanna E. Goering Trust Agreement  
Jill H Goldberg Annuity  
Suzanne Guice IRA  
Estate of Irene M. Haas  
Estate of Margaret Nagy Hajtmanszky  
Janet Reust Harris Trust  
Estate of Rachel Hayden  
Estate of Gladys Hebeisen  
Estate of Irene Heffernan  
Estate of Charles B. Hendershott  
Estate of Harry Herzek  
Estate of Harry E. Herzek  
Estate of Arline Hildebrandt  
Estate of Joan E. Hohncke  
Charlene Hurt IRA  
Fumiyo Ichikawa Revocable Trust  
Norma L. Jaffe Revocable Living Trust  
Helen Jane Harman Revocable  
Living Trust  
Mary Janvrin Revocable Trust  
Gordon Jaques Trust  
Ruth M. Jones Memorial Fund  
Mariah Julio IRA  
Estate of Sherwin A. Kane, Jr.  
Estate of Richard William Keller  
Barbara Kelly Charitable Lead Trust  
Isabel F. Kouri Trust  
Estate of Emma Jeanne Kovac  
Phyllis Kowats IRA  
Howard Lasher Revocable Trust  
Estate of Paul Lazur  
Carol M. Lehmann Revocable Trust  
Wayne and Hope Leizear Trust  
Ella Lerner Revocable Trust  
Virginia Levenhagen Survivor's Trust  
Melva A. Long Revocable Trust  
Estate of Eldo Luciani  
Barbara Mach Estate  
Estate of Margaret Ann Machnicki  
William and Beatrice Madauss Trust  
John Malanga Trust  
Charles L. Mannillo Revocable Trust  
Estate of Sharon Maus  
The John S. McEvoy Living Trust  
Beverly J. Merritt Trust  
Beverly Merritt Annuity  
Elynn Merritt Annuity  
Carol L. Merritt Living Trust  
Louise F. Meyer Irrevocable Trust  
Estate of Glenn Francis Michaelson  
Estate of Dale Moran aka Marguerite  
Dale Moran  
Horace A. Moses Trust  
Ruth N. Moulton Charitable Trust  
Gertrude E. Muller Revocable Trust  
Estate of Barbara Ann Mulvaney  
Estate of Henriette L. Musgrove  
The Estate of William J. Myslak  
Estate of Joan E. Nalesnyk  
I. J. Nast Trust  
Estate of Jane C. Nelson  
Nelson Grantor Trust  
Estate of Carolyn Sue Nicodemus  
Linda Kay Nicoll Trust  
Jean Leslie Norcross Revocable Trust  
Estate of Barbara E. Nowaczyk  
Angeline M. O'Meara Trust  
M. Colyer Charitable Trust  
Margaret E. Otto Administrative Trust  
Betty M. Overton Trust  
Estate and Trust of Virginia Pingrey in  
Memory of Harry James  
Irene Plaga IRA  
Nancy L. Plumb IRA  
Aurora Portilla Revocable Trust  
Estate of Dennis Powell  
Estate of Howard Prass  
David M. Pyrich Estate/Trust  
Naomi K. Raber Nongrantor Charitable  
Lead Annuity Trust 1  
Josephine Enzone Read Annuity  
Estate of Jean M. Renchkovsky  
Eugenia Riordan Mule 2010 CLAT  
Estate of Thomas Ritzman  
Estate of Ilena S. Sack  
Mary Sage Charitable Trust  
Margaret Sage Charitable Trust  
Fredericka Santos Brokerage Account  
Warren W. and Pauline Sass  
Living Trust  
Joanne K. Schmidt Trust  
Schommer Revocable Trust  
Estate of Steven Schrum  
Estate of Patricia Schubert  
Estate of Shirley S. Schwartz  
Samuel F. Scott Trust  
Jack O. Scroggins  
Charitable Foundation  
Estate of Mary Secula  
Estate of Marianne Seidenberger  
Estate of Suzanne Shepherd  
Estate of Marcia L. Shuman  
Estate of Lavona E. Slack  
The Smith Family Trust  
Estate of Helen Smith  
Kirk Smith Trust  
Roy S. Smith Charitable Trust  
Estate of Jeanette L. Spaulding  
Anne R. Stanley Revocable Trust  
Grace C. Stebbins Trust  
Stewart Family Trust  
Donald R. Storey and Judith M. Storey  
Trust, Dated December 20, 2016  
Estate of Mary Jane Thomas  
Irene E. Thompson Living Trust  
Estate of Adele G. Trested  
Erwin & Helen Tummel Revocable Trust  
Estate of Margaret Jane Tweddell  
Estate of Marilyn M. Vahlkamp  
Estate of Beverly A. Van Dyke  
Arlean M. Vauthier  
Revocable Living Trust  
Estate of Jane Vilmar  
Estate of Jean Vlamis  
Albert Walters Trust  
Estate of Joseph Wargo  
Ruth E. Warren Trust  
The Ethel J. Watts Trust  
Estate of Daniel Waxman  
Estate of Winifred R. Williams  
Estate of Grace L. Williams  
The Wincek Family Trust  
Revocable Living Trust of J.E. Witchel  
Estate of Elizabeth J. Wolf,  
in loving memory of her uncle,  
Edward Williams  
Henry C. Wruble and Leslie S. Wruble  
Charitable Living Trust  
Estate of Lynne Fields Young  
Estate of Joan Kershaw Young  
Estate of Laura S. Yurkowski  
Estate of Maryln Zahler  
The Norma Jean Zaske Living Trust  
Harold Zedler Declaration of Trust



# WAYS TO GIVE

“ Because of Guiding Eyes, thousands of people who are blind will never walk alone. ”

- Marvin + Jude, Pathfinder Society Members

Any donation is welcome!

Special opportunities to support our mission include:

▶ \$500 to \$2,000	Personalize a leaf or stone from our “Honor Tree” for a beloved pet or person.
▶ \$1,000	Sponsor a graduation ceremony.
▶ \$1,000 to \$2,500	Dedicate a cute paw on our “Paws of Fame” wall to honor a loved one.
▶ \$5,000	Special Name a Guiding Eyes puppy.
▶ \$10,000	Sponsor the Home or On-Campus Training of a guide dog team.
▶ \$50,000	Sponsor a Guiding Eyes handler-guide dog team, from breeding through training.
▶ Pathfinder Society	Become a Pathfinder by including Guiding Eyes in your estate plans.



Visit [GuidingEyes.org/give-today](https://www.GuidingEyes.org/give-today) for more information



# MAKE A BIG IMPACT WITH A FUTURE GIFT

**By including Guiding Eyes in your estate plans, you can help us continue our life-changing work while also meeting your personal and financial goals.**

Options range from a simple bequest to a gift that provides you with income for life, such as a gift annuity or trust. Guiding Eyes can assist you with sample language and other information to discuss with your financial advisor.

Our Pathfinder Society exists to recognize friends who have remembered us in their estate plans. Becoming a member of the Pathfinders is a beautiful testament to your dedication and it comes with heartfelt tokens of our appreciation — including updates on a pup you help to support. You'll also be invited to special events and gatherings in your area.



Visit [GuidingEyes.MyLegacyGift.org](https://GuidingEyes.MyLegacyGift.org)

or contact Kathleen A. O'Reilly at (914) 243-4355 or [KOReilly@guidingeyes.org](mailto:KOReilly@guidingeyes.org).

## Pathfinders

Ms. Renee Abernathy\*  
Jane Adams  
Mr. and Mrs. Ronald E. Ahlers  
Ms. Nell M. Alger  
Mrs. Cynthia Y. (Byron) Allen  
Dr. Julie Ann Allender  
Jennifer and Brian Alves  
Christine G. Anastos  
Mr. Donald J. Augustin  
Susan B. Bailey  
John Baker  
Mr. L. Eddie Ball  
Chris Ball

Mr. and Mrs. Stephen W.  
Barker  
Mr. and Mrs. George E.  
Bashaw  
Lana Bauman  
Ms. Gayle Becker  
Ruth Begany  
Jeffrey Benario and  
Kathy Flood  
Jennifer Bennett-Yafanero  
Ilene Berger  
Sandra Bernstein  
Gail and Charles Bisignano

Ms. Linda Blakely  
Ms. Janice Blanton  
Gail Marie Blosser  
Alida Bockino  
Susan Bogin  
Mr. and Mrs. Nathan J.  
Bolognini  
Judy Bon  
Ms. Ardis Bourland  
William J. Brand  
David T. Brandt  
R. F. Breuer  
Brad Brieman

Ann D. Broekhuizen  
Barbara A. Brunner  
Patrick Bucher  
Mr. and Mrs. Michael Buckley  
Susan Budin  
Richard and Pamela Burke  
Gail M. Burris  
Donald R. Byrd  
Brian and Pamela Canham  
Tabitha (Annie) Carini  
Mr. and Mrs. Ramon V. Carli  
Mark and Anne Carron  
Linda M. Cartwright

Barbara Castellano  
Cindy Chamberlin  
Ruth Chase  
Barbara A. Cicalese  
Judith and Warren Clark  
Mr. Armand Cohn  
Anna Conklin  
Linda Cooper-Moriarty  
Rocco and JC Cornacchia  
Mr. and Mrs. Tom Cote  
Cindy Cravitt  
William R. Crawford  
Francis G. and Timothy P. Crawford  
Dianna Crocker and Michael Nash  
Mrs. Deidre H. Crofton  
Maria Curreri  
Eileen M. Curtin  
Joseph and Paula D'Agostin  
Patricia and John d'Auguste  
Linda Darico  
Jane Daugherty  
Wendy S. David  
Ellen Davis and Myra Kaplan  
Ann Davis-Ramsey  
Linda N. Deeter  
Karen Delisle  
Mr. Michael DellaRipa  
Angela Devietro and Judy Mitchell  
Brian and Pamela Canham  
John and Lynn Dillon  
Linda M. Doster  
Ms. Jeanne Dregalla  
Ms. Patricia Driscoll  
Sherrie Dulworth  
Penny Dvoracek  
Ms. Joyce Egeberg  
Karen M. Eismann  
Mr. and Mrs. Reid Elko  
Deni Elliott  
Ms. Dianne M. Ende  
Bob and Ruth Escher  
Christine A. Facondini\*  
Norman and Susan Fainstein  
Heidi Farnham  
Lee Fatell  
Karen Fiebig  
Carmen Figueroa  
Mr. and Mrs. Richard Fisher  
Ms. Sally J. Fisher  
Gail Ann Fisher  
Maureen Fitzgerald  
Julie Fleming  
Ethan Flint  
Mary L. Foley\*  
Mrs. Suzanne Ford  
Rita O'Brien Sims Franklin  
Ina R. Friedman  
Mark Fryman  
Minnie Cobey Gallman  
Sandra Gamble  
Ms. Margaret Gardner  
Dr. Joel Gavriale-Gold  
Betty Gerendasy  
Phyllis M. Gibula  
Frances A. Giovanetti  
Ms. Mary V. Gloss  
Stacy Mignon Glover  
Mr. and Mrs. James Goldman  
Mrs. Marian Goodloe  
Mary Graefen  
Marsha Graves

Margaret M. Grootkett  
Tom and Holly Groos  
Edmund A. Grossman  
James Haas\*  
Carol V. Haberer  
June H. Haines  
Mrs. Natalie Hall  
Sandra G. Hall  
Jean Hamburg  
Mr. John K. Hammel  
Hayes and Karen Hanley  
Camilla Hardmeyer  
Diana Harper  
Barbara T. Hawkins  
Bonni Heitman  
Ms. Elaine Henderson  
Jane Hettesheimer  
Miss Carole J. Higgins  
John and Nancy Hines  
Fae L. Hoffman  
Mrs. Marie Horhota  
David C. Horn  
Rebecca Horyczko  
Carole Houghton  
Jim and Jan Hovda  
Sharon Howerton  
Brian F. Hoyt  
Marianne Huber  
Ms. Gail A. Hummer  
Janet Humphreys  
L. A. Hunt  
Gunilla Isaksson  
Dory Israel  
Lynn M. Jackson  
Cathy E. Jaster  
Eileen D. Jauch  
Lynda Jeppesen  
Mrs. Mary Alice Johnson  
Ms. Michelle Johnston  
David and Barbara Katz  
Patty Kelly  
Arlene and Michael Kelly  
Charles J. and Nancy Kennedy  
Tony and Fran Kerchner  
Ms. Joanne Kish  
Janet F. Kleiner  
Carol and Bruce Koch  
Flora Kowal  
Daniel Krakovsky  
Hildegard Krause  
Roger K. Krott\*  
Kenneth Laban  
Larry and Ruth Ladd  
Mrs. Shirley Laird  
Mr. Marvin P. Langanki  
Jeanette Lasher  
Dr. Rebecca R. Leas  
Ms. Carol Anne LeBlanc  
Janice and Neil Levett  
Christine B. Lewis  
Mary Adams Loomba  
Nancy S. Lothrop  
Karen P. Lowden  
M. Leona Luckason  
Mr. and Mrs. John\* Luicci  
Peggy Nance Lyle  
Mr. Kurt Malison  
Michael Mallies  
David Mangeim  
Dr. and Mrs. William L. Mangold  
Judith Margerum  
Miranda H. Markart

Anna M. Markey  
Caroline Marr  
Barbara and Phillip Mathiews  
See Karen McIsaac Contact  
Diane B. McGrath  
Karen McIsaac and Ted Mays  
Mrs. Sharon McKenna  
Judy and Neal McKinley  
Cheryl McKy  
Charles and Michelle McNutt  
Joanne Mendes  
Mrs. Marcia Meracle  
S. E. Metz  
Jocelyn L. Miller  
Cindy Minalt  
Charlene Karen Mitchell  
Gloria A. Moak  
Michael Moraca  
Sarah and Jonathan Mugal  
Suzanna Erin Murphy and Brian Sowers  
Jeanne Carol Myers  
Ms. Karen M. Naja  
Gerri Natiello  
Dr. Norman Needel  
Mr. and Mrs. John Nelepovitz  
Mrs. Margo M. Neubauer  
Barbara L. Neuby  
Charlotte Prescott Newton  
Renee Normandy-Shane  
Mike and Sheryl O'Connell  
Brian O'Day  
Ms. Laura Oftedahl  
Bob Oldham  
Barbara Pajak  
Jerry A. Parish  
Elizabeth Penn  
Timothy Peterson  
Terri Pigue and Ralph Sole  
Cheryl L. Pitz  
Ruth E. Pollow  
Anne Powell  
Angelo J. and Ellen Purciogliotti  
Diana Quagliariello  
Rosemary Rafter  
File under Ann Davis Ramsey  
Phyllis and Don Ranum  
Rev. David B. Rapp  
Karin and Lawrence Rappaport  
Mr. Francis H. Rasmus, Jr.  
Donna Raven  
Alexis Read  
Ellen Rice  
Jerome Richter  
Cynthia Sullivan and Robert Rollmann  
Miss Augusta A. Rosasco  
Ms. Edith Rosenfield  
Sally Rosenthal  
Cynthia and Ken Rosenthal  
Mr. Leo E. Roy  
Pamela Ruegg  
Joe Ruzzo  
Terry and Carolyn Ryan  
Joan-Ann Ryan-Murphy  
Gwen Samp  
Ms. Doris R. Satterwhite  
Eileen Schary  
Ora Joan Schepps  
Mr. and Mrs. Richard Schmidt  
Ronald Schofield  
Leslie and Jerry Schratz

Mr. and Mrs. Richard Schroeder  
Richard H. Schwartz  
Diane M. Senkow  
Suzanne Shea  
Ms. Sandra M. Simpson  
Linda Slavin  
Mr. and Mrs. William I. Small  
Donna K. Smith  
Kathy and Jeff Smith  
Anne C. Smith  
Terri Pigue and Ralph Sole  
Suzanne Erin Murphy & Brian Sowers  
Marjorie Stegall Sparks  
Linda L. Spicer  
Mrs. Carol P. Spisak  
Mark F. Spisak Life Insurance Trust  
Darrell J. Stout  
Nancy Sutton  
Mrs. Karen J. Swope  
Marie A. Tarantino  
Lois Ruth Taylor  
Vickie Thomas  
Al Todd  
Jill T. Tracey  
Anne Travalia  
Ms. Marylou Tripolino  
Ms. Darlene J. Turner  
Vicki M. Tyler  
Steve Varvaro  
Norma J Violante\*  
Michaelene J. Wadolny  
J. Rachelle Walker  
Tom\* and Mary Lee Walton  
Cheryl and Basil Wankewycz  
Mrs. Loretta Warsaw  
Christine M. Washburn  
Kurt Wassen  
Mr. Clayton Waxham  
Diane Karen Webster  
Mr. and Mrs. Michael Welt  
Bobbie White  
Herb and Gayle White  
Lilita K. Wier  
Anneke Williams  
Michaelene D. Willy  
Anita Wilton  
Karen J. Wiltse, COT  
Mr. Fred Wolter  
Judith and Winton Wood  
Ginny A. Wright  
Ms. Louise B. Wulff  
Lynne Young  
Bonita R. Zaucha\*  
Sharon Zenger  
Eleanor M. Ziegler  
Ms. Alice M. Ziittel

\* Deceased

# FINANCIAL REPORT FOR FISCAL YEAR 2023

GUIDING EYES FOR THE BLIND CONDENSED AUDITED FINANCIAL STATEMENTS  
SEPTEMBER 30, 2023

## STATEMENT OF ACTIVITIES

Public Support:	Without Donor	With Donor	Total
	Restrictions	Restrictions	
Contributions	\$ 21,426,091	\$ 419,182	\$ 21,845,273
Planned giving	\$ 12,446,956	\$ 343,821	\$ 12,790,777
Other income	\$ 618,726	-	\$ 618,726
Net assets released from restrictions	\$ 1,547,280	\$ (1,547,280)	\$ -
<b>Total Public Support</b>	<b>\$ 36,039,053</b>	<b>\$ (784,277)</b>	<b>\$ 35,254,776</b>

### Expenses:

#### Program Services

Student Instruction & Dog Training	\$ 10,390,665	-	\$ 10,390,665
Client Experience	\$ 2,698,712	-	\$ 2,698,712
Veterinary Hospital	\$ 9,062,637	-	\$ 9,062,637
Canine Breeding	\$ 957,389	-	\$ 957,389
Facility & Food Service	\$ 1,785,025	-	\$ 1,785,025
Enrichment	\$ 1,843,927	-	\$ 1,843,927
<b>Total Program Services</b>	<b>\$ 26,738,355</b>	<b>-</b>	<b>\$ 26,738,355</b>

#### Supporting Services

Management & General	\$ 2,839,925	-	\$ 2,839,925
Fundraising	\$ 7,762,061	-	\$ 7,762,061
<b>Total Supporting Services</b>	<b>\$ 10,601,986</b>	<b>-</b>	<b>\$ 10,601,986</b>
<b>Total Expenses</b>	<b>\$ 37,340,341</b>	<b>-</b>	<b>\$ 37,340,341</b>

<b>Excess of Public Support Over Expenses</b>	<b>\$ (1,301,288)</b>	<b>\$ (784,277)</b>	<b>\$ (2,085,565)</b>
Investment income (net)	\$ 7,459,619	\$ 902,579	\$ 8,362,198
Other net asset adjustments	\$ 64,577	-	\$ 64,577
Net assets, beginning of year	\$ 98,298,308	\$ 8,444,420	\$ 106,742,728
<b>Net Assets, End of Year</b>	<b>\$ 104,521,216</b>	<b>\$ 8,562,722</b>	<b>\$ 113,083,938</b>

## STATEMENT OF FINANCIAL POSITION

Assets	Without Donor	With Donor	Total
	Restrictions	Restrictions	
Cash and cash equivalents	\$ 26,450,195	\$ 2,102,923	\$ 28,553,118
Receivables and prepaids	\$ 3,388,429	-	\$ 3,388,429
Investments	\$ 54,369,728	\$ 6,459,799	\$ 60,829,527
Other assets	\$ 447,679	-	\$ 447,679
Operating Lease Asset	\$ 101,775	-	\$ 101,775
Land, buildings and equipment, net	\$ 24,170,682	-	\$ 24,170,682
<b>Total Assets</b>	<b>\$ 108,928,488</b>	<b>\$ 8,562,722</b>	<b>\$ 117,491,210</b>

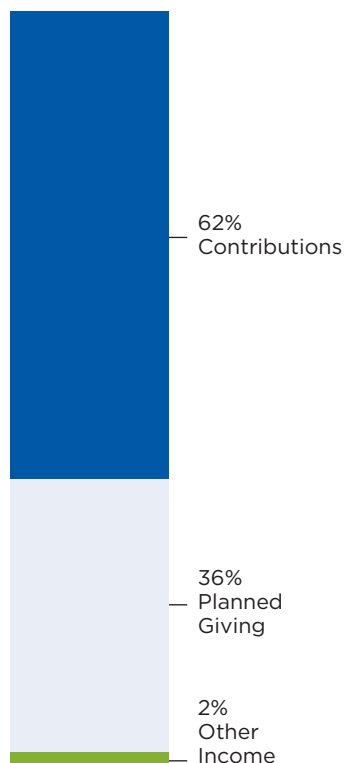
### Liabilities & Net Assets

Accounts payable & accrued expenses	\$ 1,504,790	-	\$ 1,504,790
Public Support Received in Advance	-	-	-
Gift annuity and other reserves	\$ 1,994,108	-	\$ 1,994,108
Bonds payable	\$ 421,020	-	\$ 421,020
Deferred 457B	\$ 385,579	-	\$ 385,579
Operating Lease Liability	\$ 101,775	-	\$ 101,775
Net assets	\$ 104,521,216	\$ 8,562,722	\$ 113,083,938
<b>Total Liabilities and Net Assets</b>	<b>\$ 108,928,488</b>	<b>\$ 8,562,722</b>	<b>\$ 117,491,210</b>

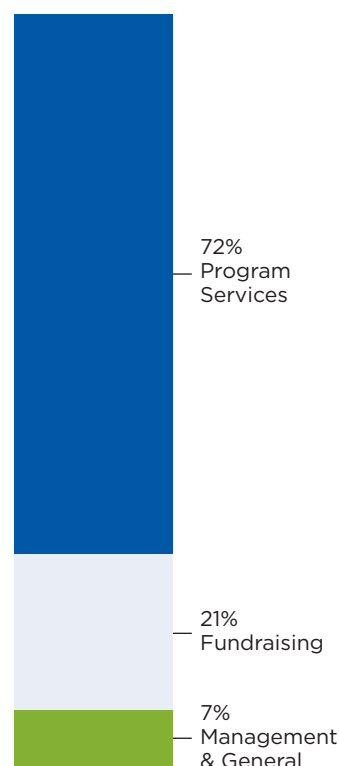
Our website, which contains the electronic financial statements, will advise the reader that such financial statements are presented for convenience and information purposes only, and while reasonable efforts have been made to ensure the integrity of such information, it should not be relied on. A copy of the printed fiscal year 2023 audited financial statements will be provided upon request.

The above condensed financials have been taken from the fiscal year 2023 financial audit performed by BDO, USA LLP.

## FY23 PUBLIC SUPPORT



## FY23 FUNCTIONAL EXPENSES



# OUR LEADERS

## BOARD OF DIRECTORS

John L. Donnelly, *Chair*  
Holly Hess Groos, *Vice Chair*  
Matthew E. Zames, *Treasurer*  
Jane Adams, *Secretary*

Eduardo Andrade  
Patricia David  
Wendy S. David  
David Fein  
Sue Kelsey  
Curt J. Landtroop  
Eli Manning

Jane C. Parker  
Andrea Redmond  
Cory Shields  
Thomas McC. Souther  
Cynthia Sullivan  
Dr. Gaurang Trivedi



**Board members and instructors/staff, left to right: John Donnelly, Board Chair; Miranda Beckmann, Foundation Manager; Curt J. Landtroop with guide dog Quincy; Eduardo Andrade; Melissa Carney, Community Outreach & Graduate Support Manager with guide dog Aron; Thomas McC. Souther; Jane C. Parker; Andrea Redmond; Patricia David; Holly Hess Groos; Chelsea Nohan, GDMI Trainee; Caroline Walsh, GDMI Trainee; Allie Greenberg, Foundation GDMI; Cynthia Sullivan; Michelle Tang, Placement Specialist; Eli Manning.**

**Not pictured: Jane Adams, Wendy S. David, David Fein, Sue Kelsey, Cory Shields, Dr. Gaurang Trivedi, Matthew E. Zames.**

## SENIOR MANAGEMENT TEAM

Thomas A. Panek, *President & Chief Executive Officer*  
Beth Brenninkmeyer, DVM, *Chief Veterinary Officer*  
Gerald Brenninkmeyer, *Director of Training*  
Elena Consalvo, *Chief Development Officer*  
William Ma, *Head of Technology Operations*  
Laura Peterman, *Chief of Staff*  
Janine Petrora, *Head of Human Resources*  
Danielle Roth, *Chief Financial Officer*





## BECOME A VOLUNTEER

Volunteers are a vital part of the Guiding Eyes community. Ways to become involved include:

### ▶ CAMPUS VOLUNTEERS

Assist in kennels or in our offices, gather social media content, help with event planning, serve as a brand ambassador.

### ▶ PUPPY RAISING

Provide a home for a pup, teach them basic skills, and attend training classes with them.

### ▶ FOSTER A BROOD/STUD

Provide a permanent home for a brood or stud dog.

### ▶ EARLY TRAINING & SOCIALIZATION

Help our pups learn confidence and resilience on campus.

### ▶ HOME SOCIALIZATION

Introduce pups to new sights, sounds, and people for 3-5 days in your own home.

### ▶ HOME LITTER CARE

Host a mom and litter of future guide dog puppies for up to 5 weeks in your own home.



Visit [GuidingEyes.org/Volunteer](https://www.GuidingEyes.org/Volunteer) to learn more.

## GUIDING EYES FOR THE BLIND

611 Granite Springs Road  
Yorktown Heights, NY 10598  
(800) 942-0149



[GuidingEyes.org](https://www.GuidingEyes.org)

Guiding Eyes for the Blind is a leading nonprofit guide dog school with 501(c)(3) status.